

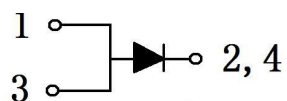
## / Descriptions

TO-252

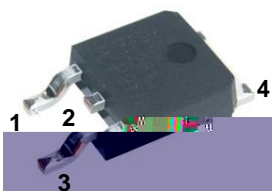
## / Features

## / Applications

## / Equivalent Circuit



## / Pinning



## / $h_{FE}$ Classifications & Marking

**/ Absolute Maximum Ratings(Ta=25 )**

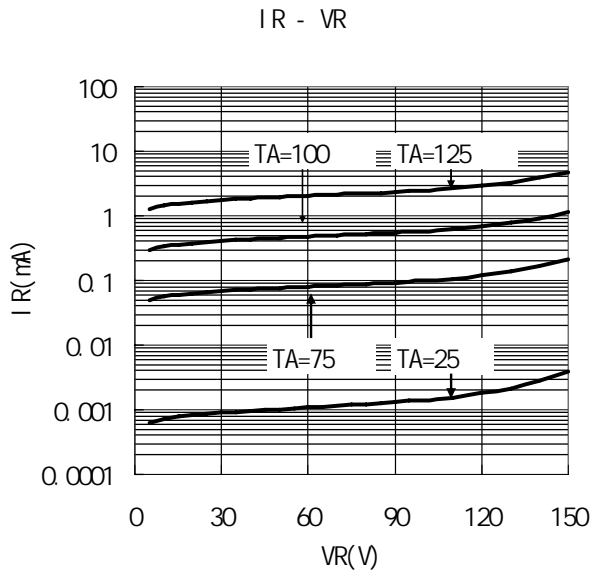
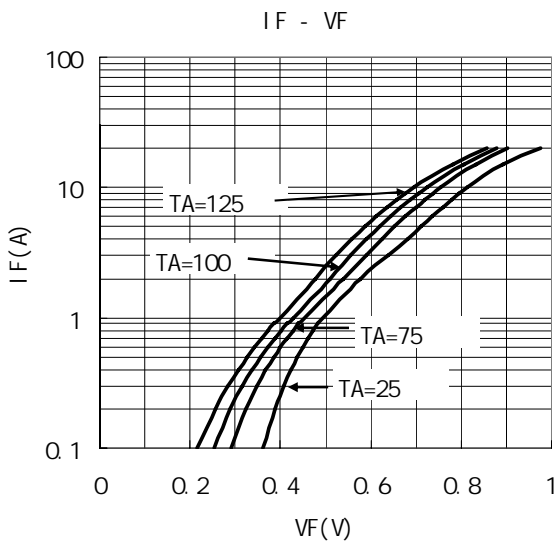
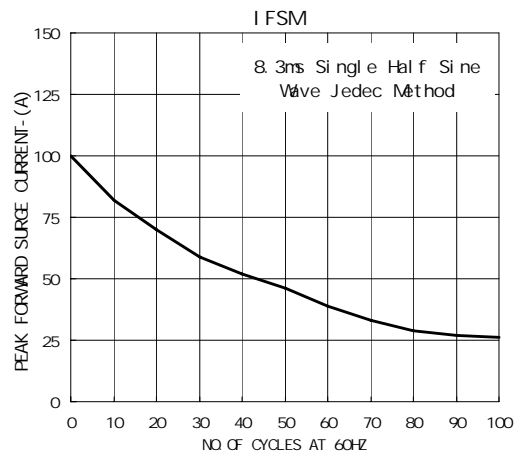
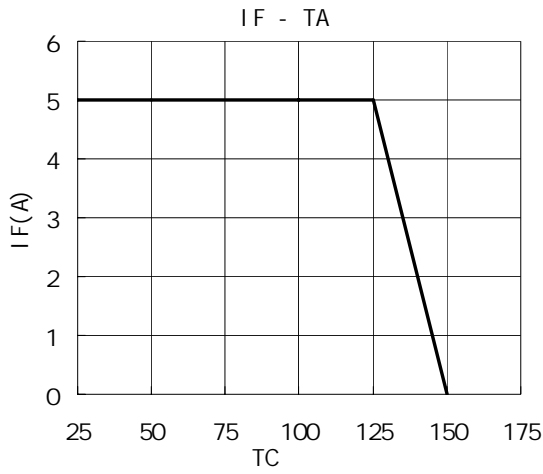
			°C
			°C
			°C

**/ Electrical Characteristics(Ta=25 )**

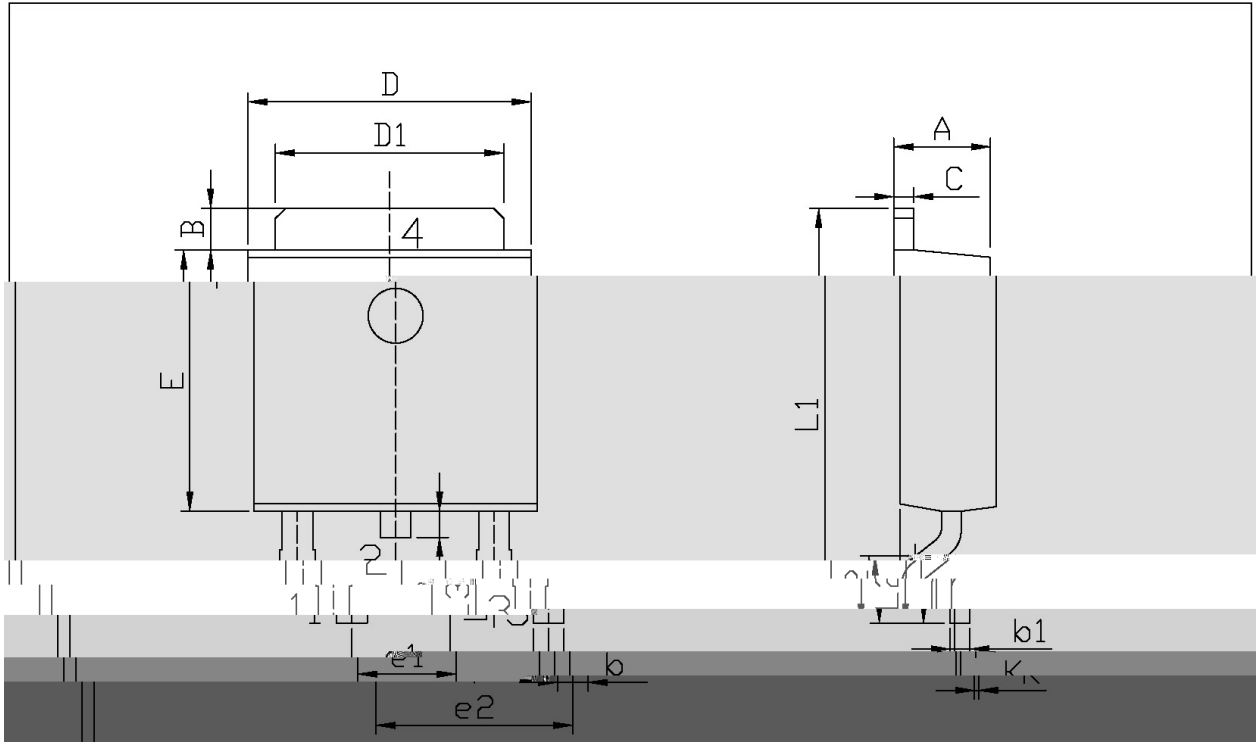
			°C			
			°C			
			°C			
			°C			
			°C			
			°C			
			°C			

1.

/ Electrical Characteristic Curve



/ Package Dimensions

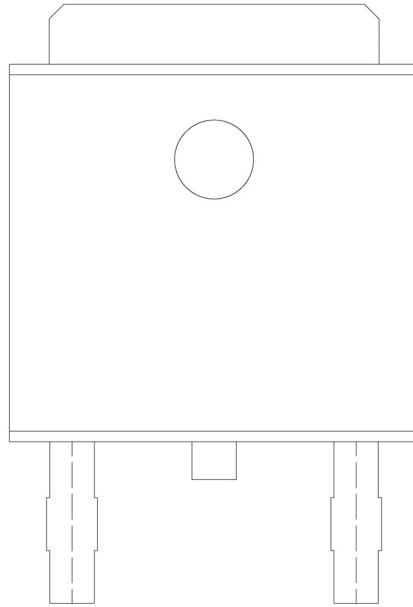


单位: mm

Dimensions In Millimeters				Dimensions In Millimeters		
Symbol	Min	Max	Symbol	Min	Max	
A	2.20	2.40	E	5.95	6.25	
B	0.95	1.25	e1	2.24	2.3	
b	0.50	0.70	e2	4.43	4.7	
b1	0.45	0.55	L1	9.45	9.9	
C	0.45	0.55	L2	1.25		
D	6.45	6.75	L3	0.60		
D1	5.10	5.50	K	0.00		

TO-252

/ Marking Instructions

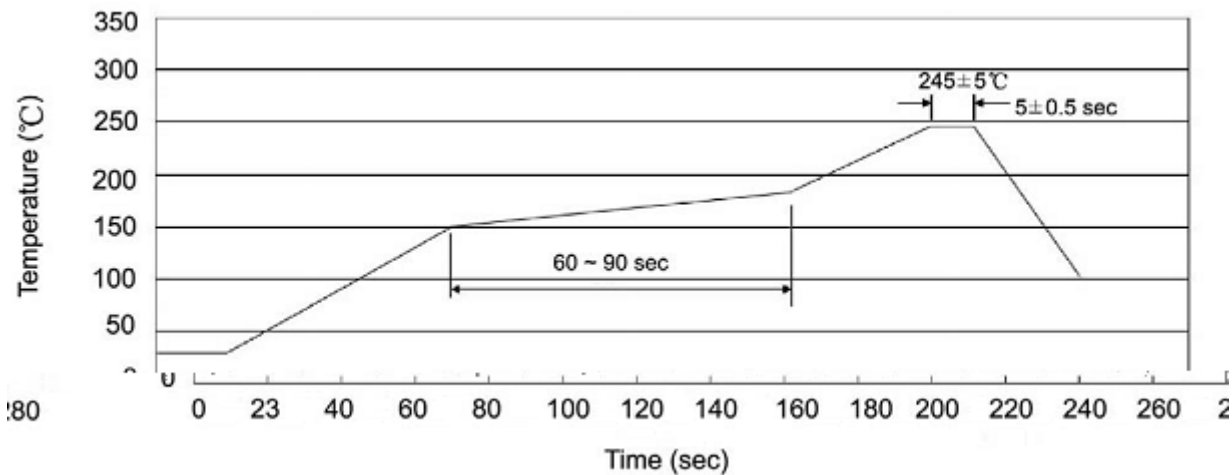


BR

10T150

\*\*\*\*

( ) /



± ± ± ±

/ Resistance to Soldering Heat Test Conditions

± ± °C

/ Packaging SPEC.

封装形式	包装数量					包装尺寸 :		
	只卷盘	卷盘盒	只盒	盒箱	只箱	盒	箱	