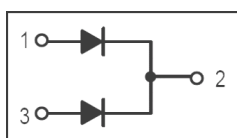


/ Descriptions

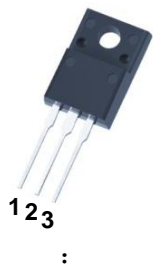
/ Features

/ Applications

/ Equivalent Circuit



/ Pinning



/ h_{FE} Classifications & Marking

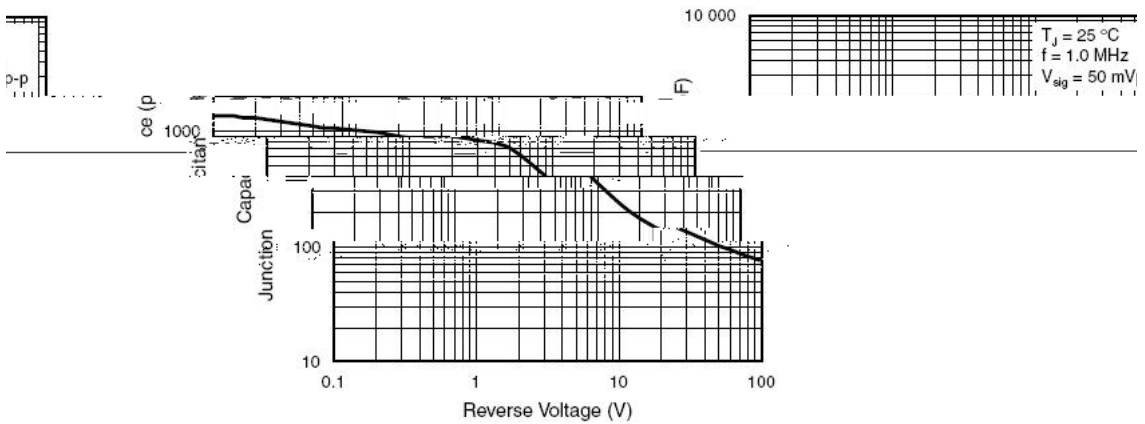
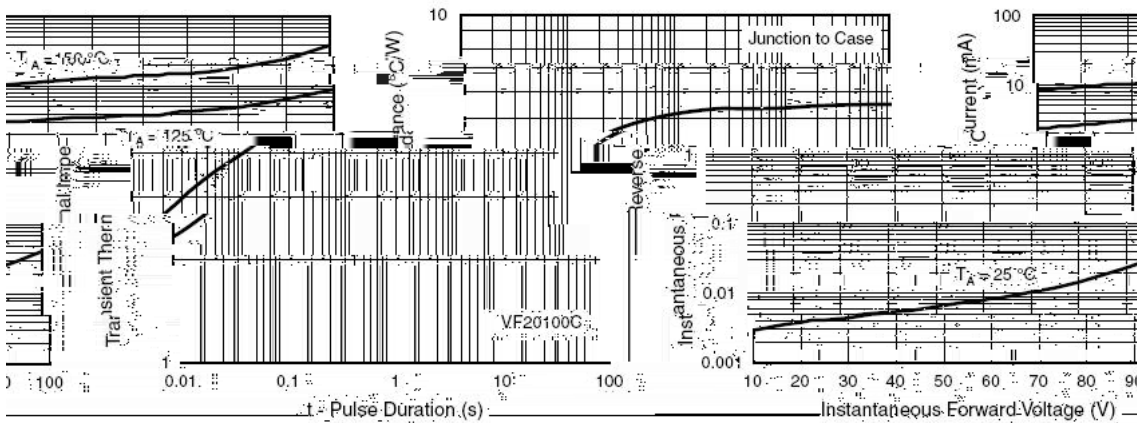
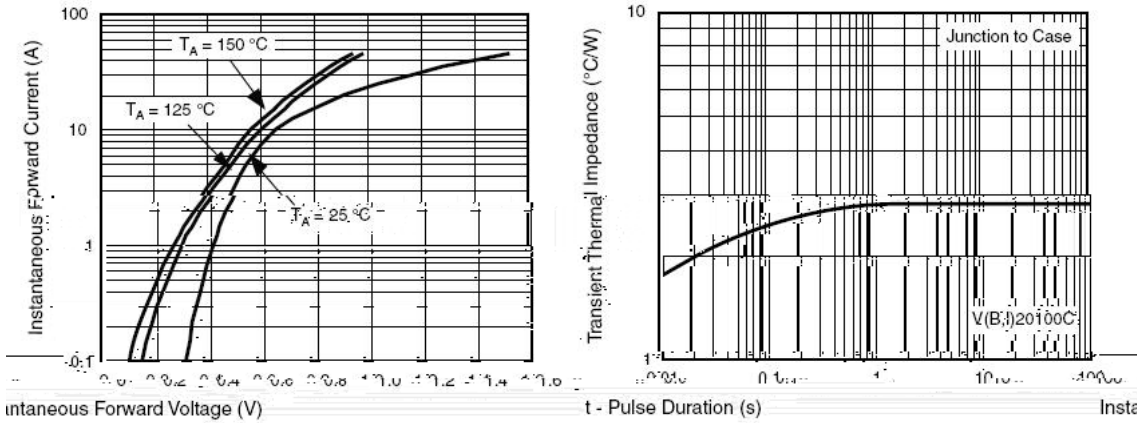
/ Absolute Maximum Ratings(Ta=25)

		×	
		~	

/ Electrical Characteristics(Ta=25)

	()					μ

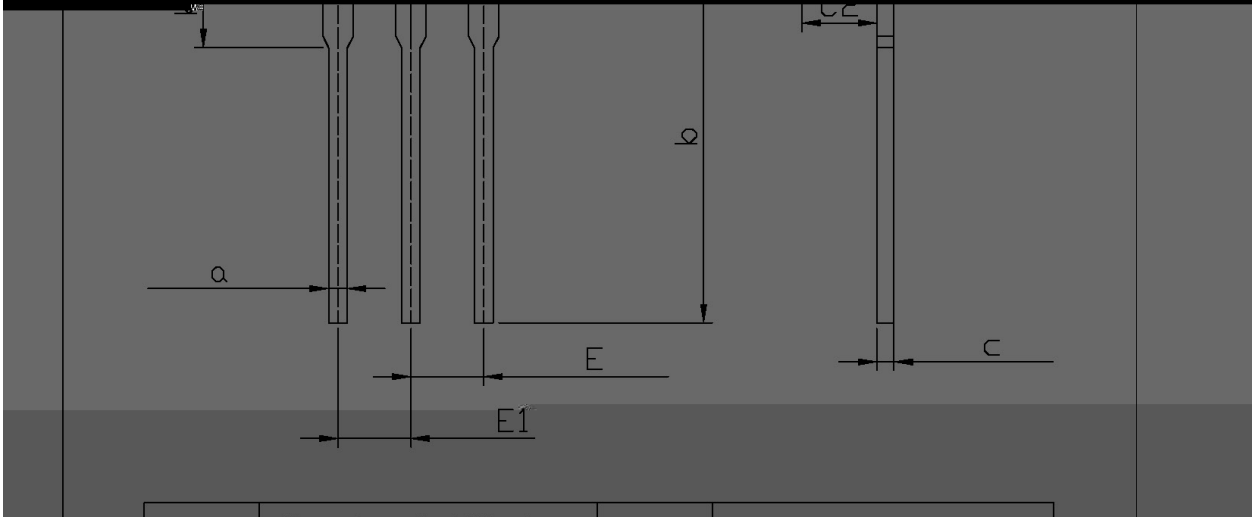
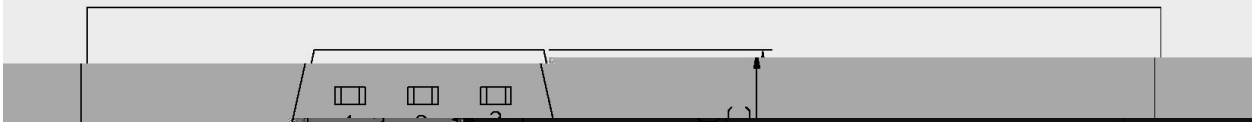
/ Electrical Characteristic Curve



/ Package Dimensions

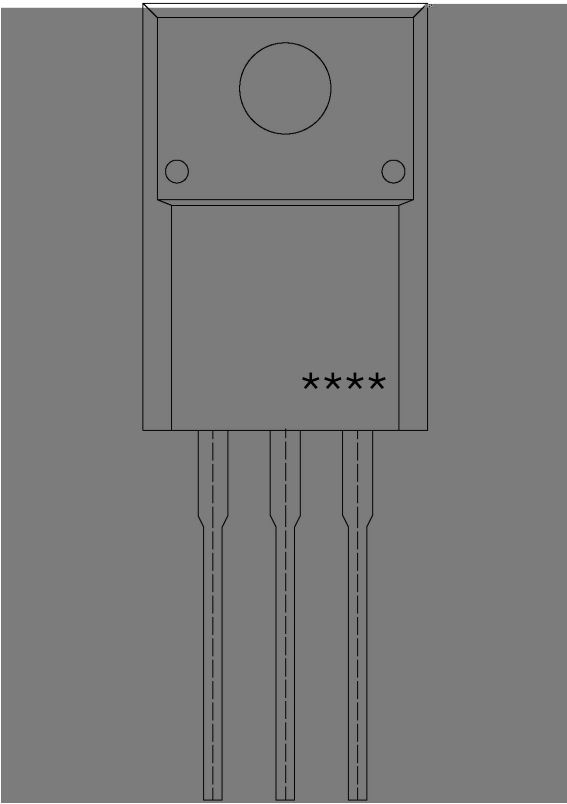
TO-220F

单位: mm

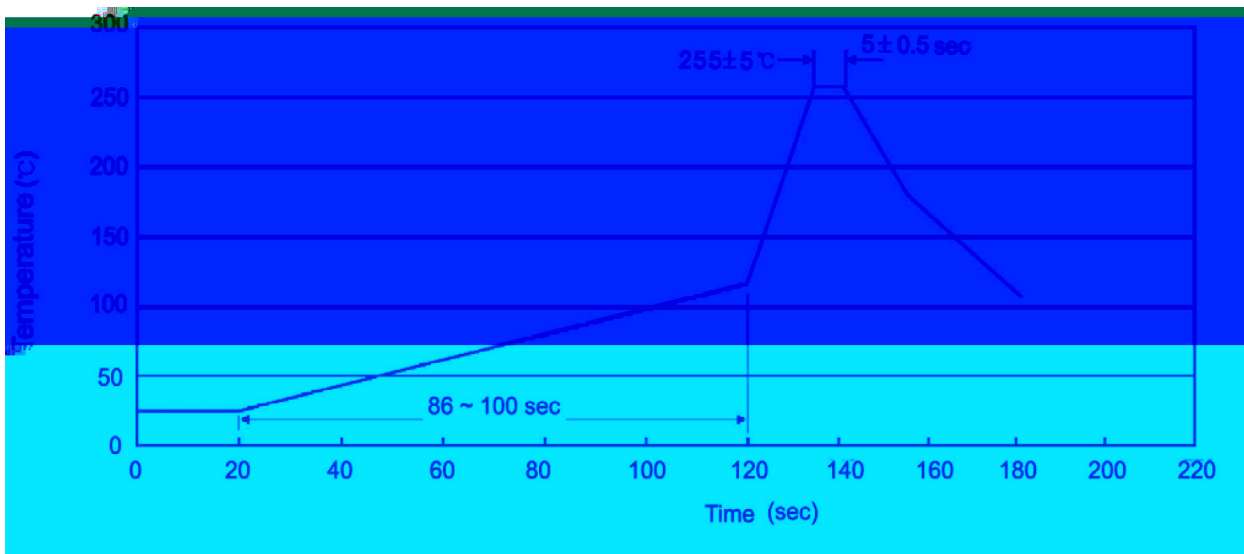


Dimensions In Millimeters Dimension 尺寸 In Millimeters

/ Marking Instructions



() / Temperature Profile for Dip Soldering(Pb-Free)



/ Resistance to Soldering Heat Test Conditions

/ Packaging SPEC.

						Bag	Inner Box	Outer Box
	Units/Bag	Bags/Inner Box	Units/Inner Box	Inner Boxes/Outer Box	Units/Outer Box			
TO-220/F	200	10	2,000	5	10,000	135×190	237×172×102	560×245×195

						Tube	Inner Box	Outer Box
	Units/Tube	Tubes/Inner Box	Units/Inner Box	Inner Boxes/Outer Box	Units/Outer Box			
TO-220/F	50	20	1,000	5	5,000	532×31.4×5.5	555×164×50	575×290×180

/ Notices