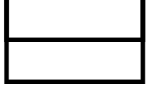


MB05F~MB10F



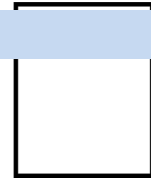
DATA SHEET

/ Descriptions



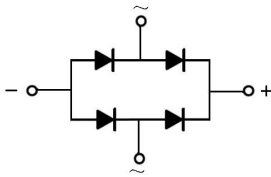
/ Features

RoHS 50V~1000V 1A



/ Applications

/ Equivalent Circuit

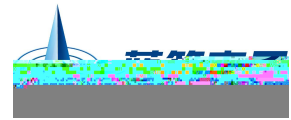


/ Pinning



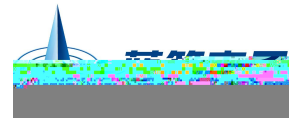
PIN	DESCRIPTION
1	Input Pin (~)
2	Input Pin (~)
3	Output Anode (+)
4	Output Cathode (-)

/ Marking



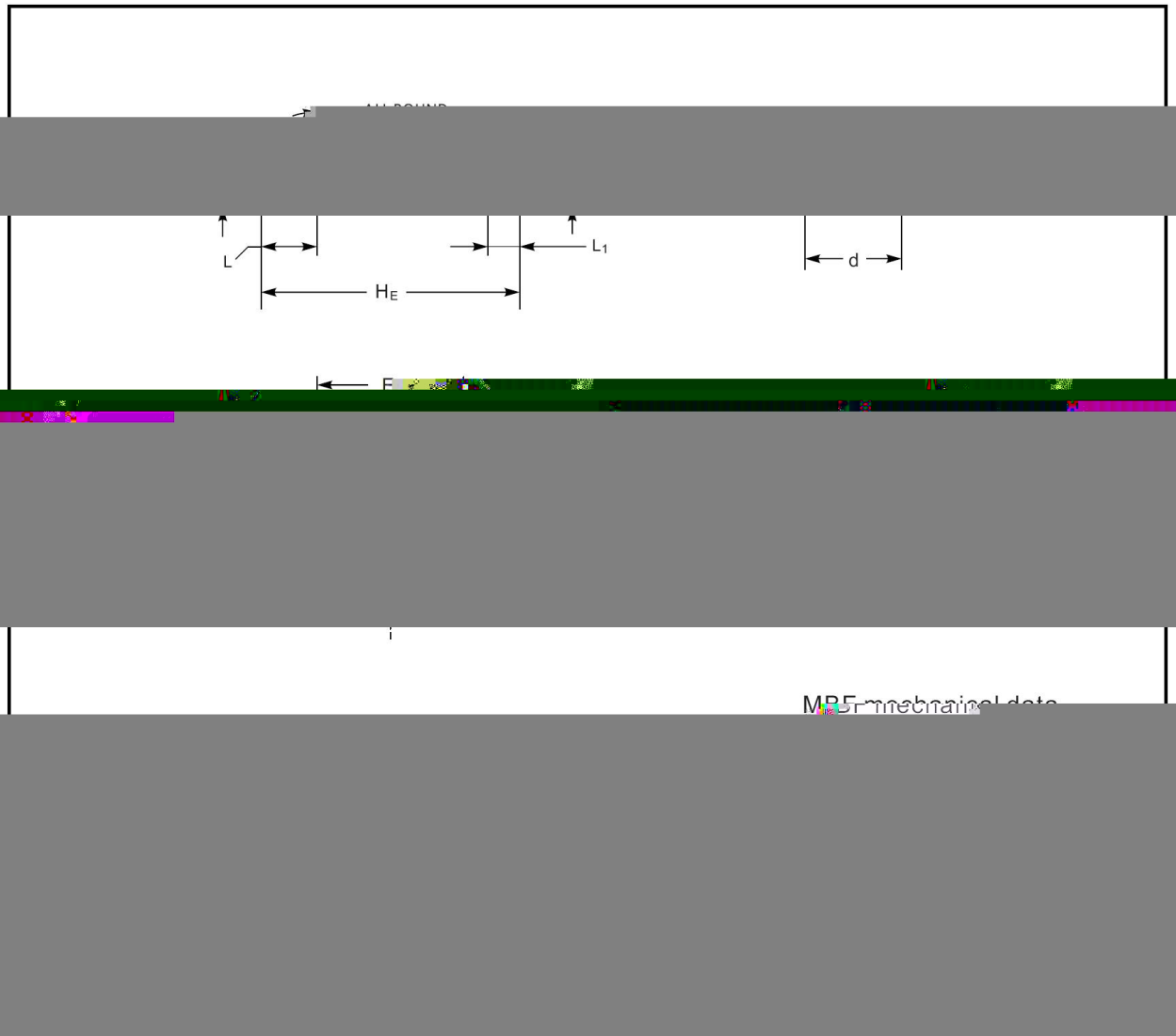
/ Electrical Characteristic Curve





/ Package Dimensions

MBF



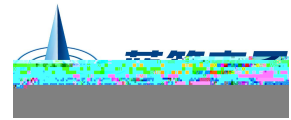


/ Marking Instructions



说明

- : 为型号代码
- : 为生产批号追溯码，第 个 为年月代码，后面 个 为当月小批号代码
- :
- :



() /

± °C ± °C ± °C ± °C

/ Resistance to Soldering Heat Test Conditions

± °C ± °C ± °C ± °C

/ Packaging SPEC.