



/ Descriptions

1.0A 表面贴装肖特基桥，薄型 MBF 封装。

1.0A Surface Mount Schottky Bridge, MBF thin package.

/ Features

浪涌电流大，反向电压：40V~200V，正向电流：1.0A，适用于表面贴装。无卤产品。

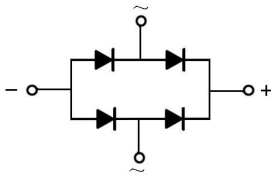
High Surge Current Capability, Reverse Voltage: 40 to 200V, Forward Current: 1.0 A, Designed for Surface Mount Application. Halogen free product.

/ Applications

一般用途。

General purpose.

/ Equivalent Circuit



/ Pinning



PIN	DESCRIPTION
1	Input Pin (~)
2	Input Pin (~)
3	Output Anode (+)
4	Output Cathode (-)



/ Marking

见印章说明。 See Marking Instructions.

MB14F~MB120F

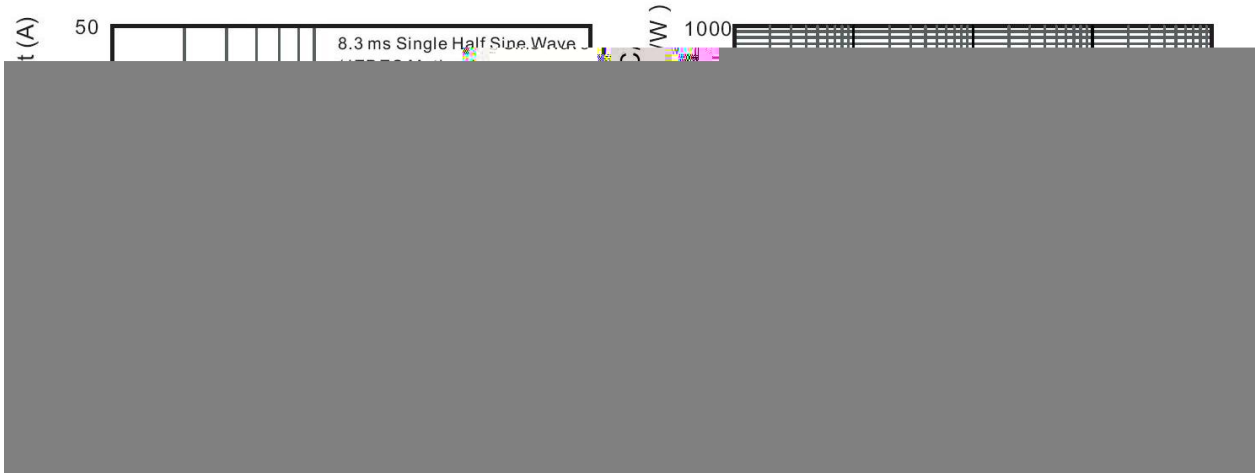
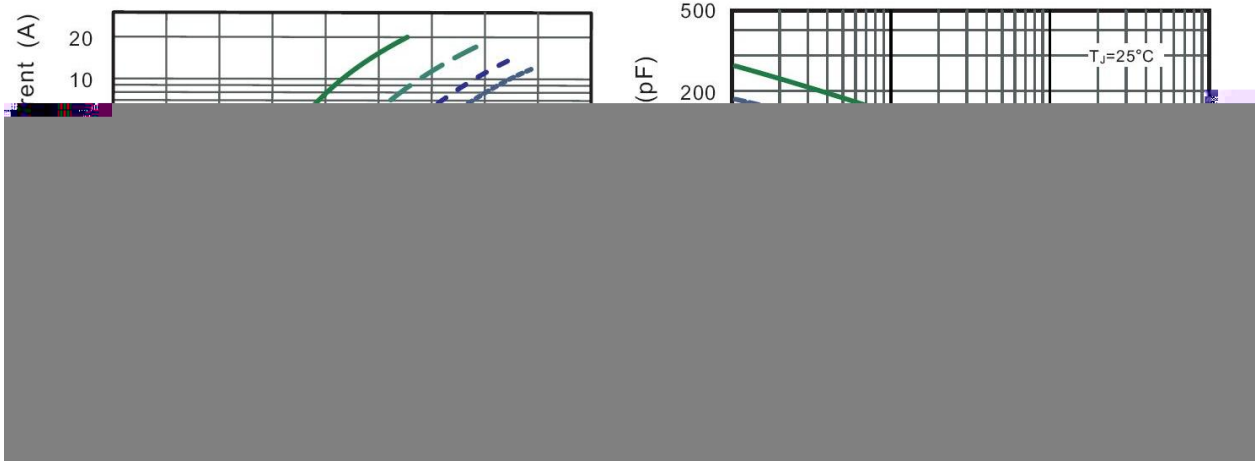
Rev.E Jan.-2021



DATA SHEET

参数 Parameter	符号 Symbol	数值 Rating					单位 Unit	
		MB14F	MB16F	MB18F	MB110F	MB115F	MB1	

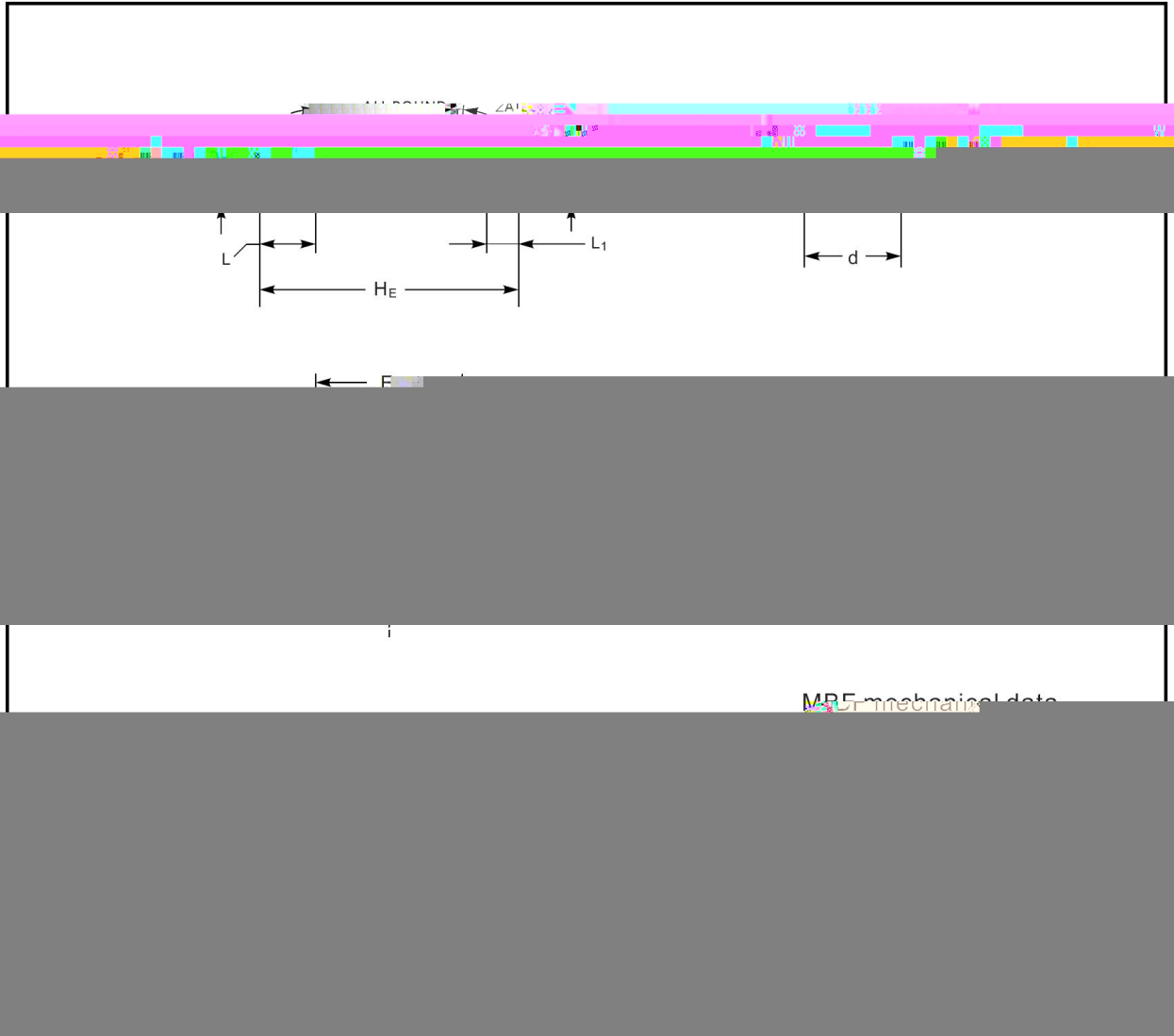
/ Electrical Characteristic Curve





/ Package Dimensions

MBF



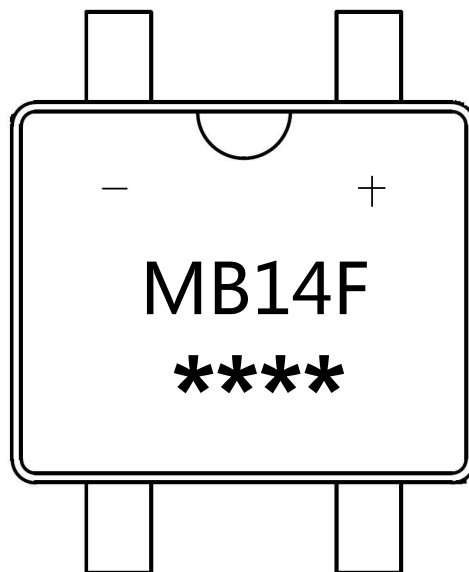
/ **Marking Instructions**

Marking





/ Marking Instructions



说明

MB14F : 为型号代码

**** : 为生产批号追溯码，第 1 个*为年月代码，后面 3 个*为当月小批号代码

Note:

MB14F : Product Type Code

**** : Lot No. Code , The 1st * means:YM Code , The last 3 * means:little Lot No Code

MB14
Rev.E

Temperature (°C)

数量		Dimension 包装尺寸 (unit: mm ³)		
Inner Boxes/Outer Box 盒/箱	Units/Outer Box 只/箱	Reel	Inner Box 盒	Outer Box 箱
7	70000	13" x12	336X336X40	380X335X366

MBF 5000 2 10000