

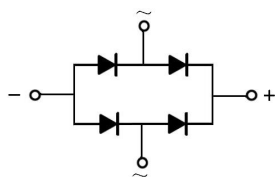
/ Descriptions

/ Features

100V~1000V 0.5A

/ Applications

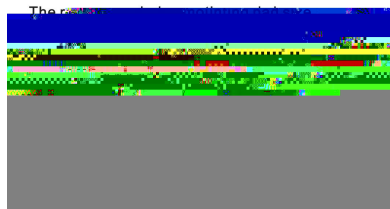
/ Equivalent Circuit



/ Pinning



PIN	DESCRIPTION
1	Input Pin (~)
2	Input Pin (~)
3	Output Anode (+)
4	Output Cathode (-)



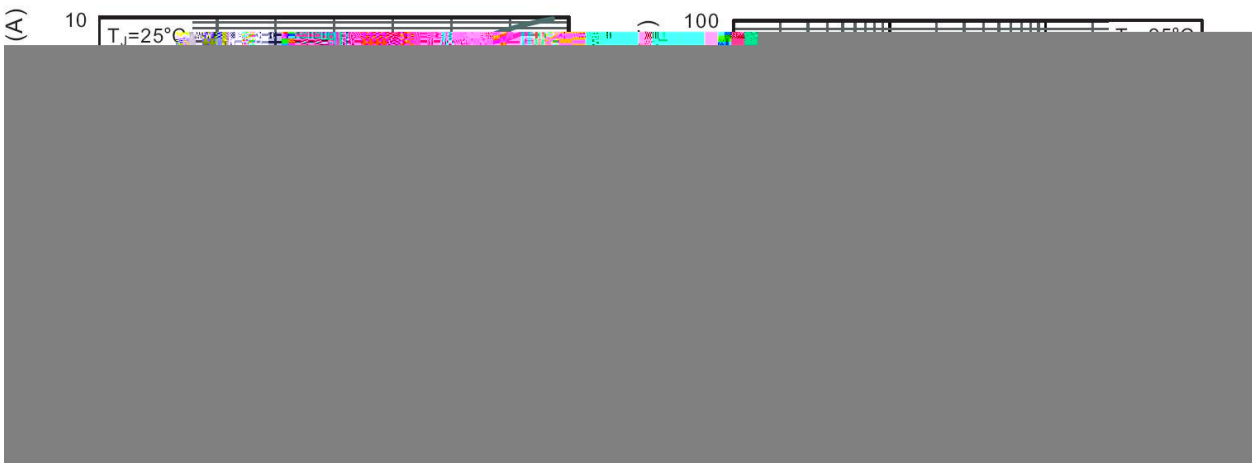
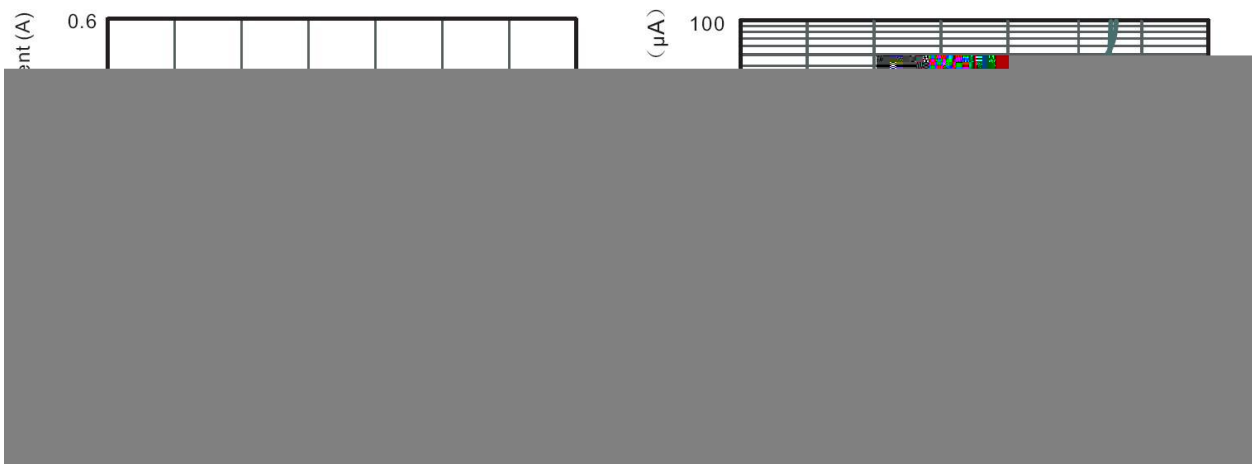
/ Marking



参数	符号	数值						单位
℃								
)								
)								
								℃



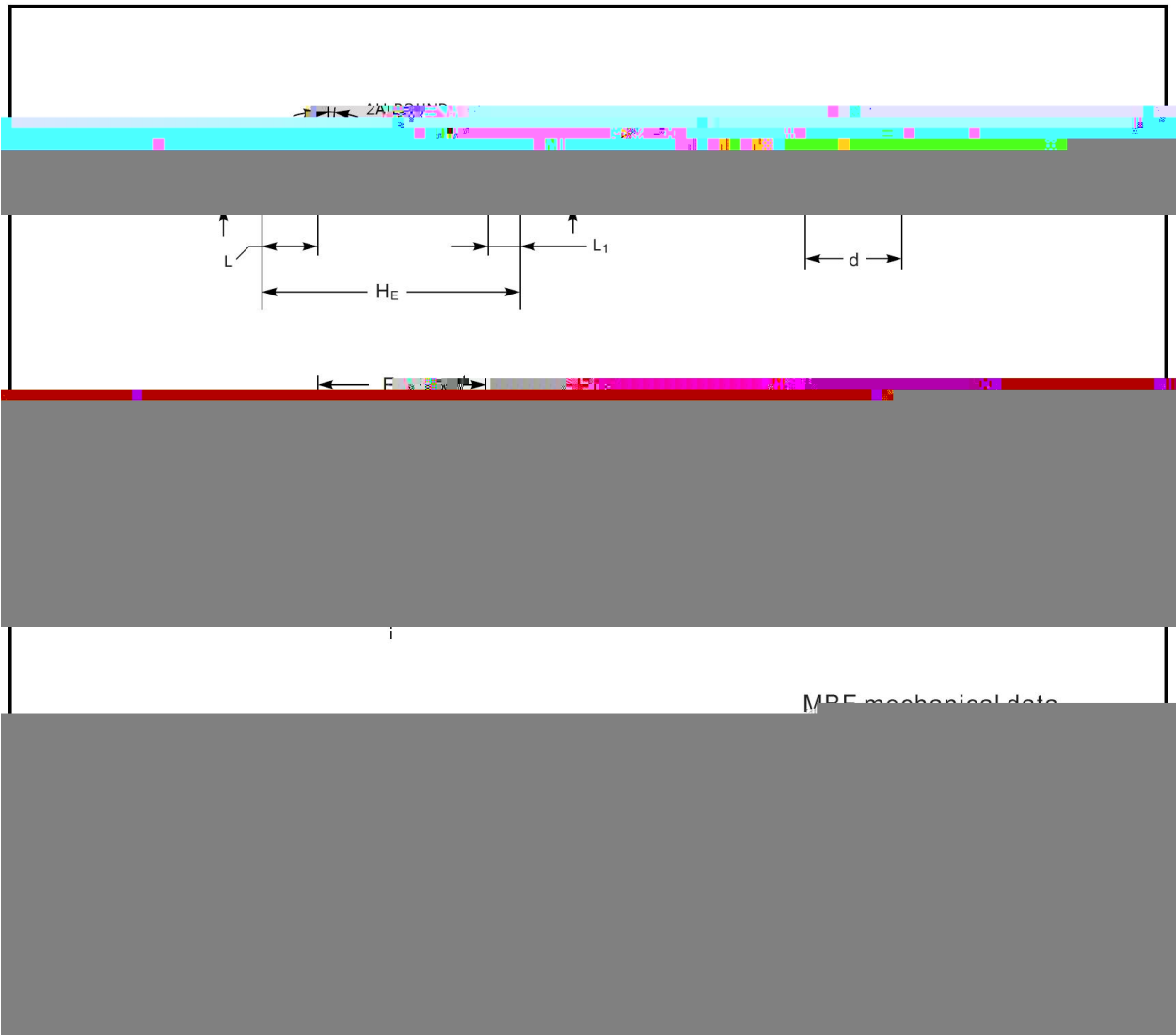
/ Electrical Characteristic Curve





/ Package Dimensions

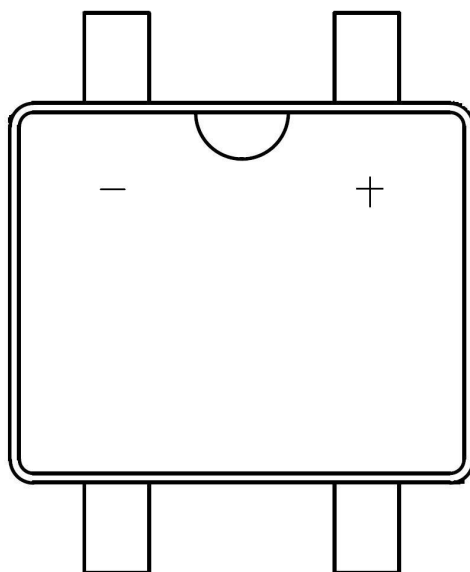
MBF



/ Marking Instructions

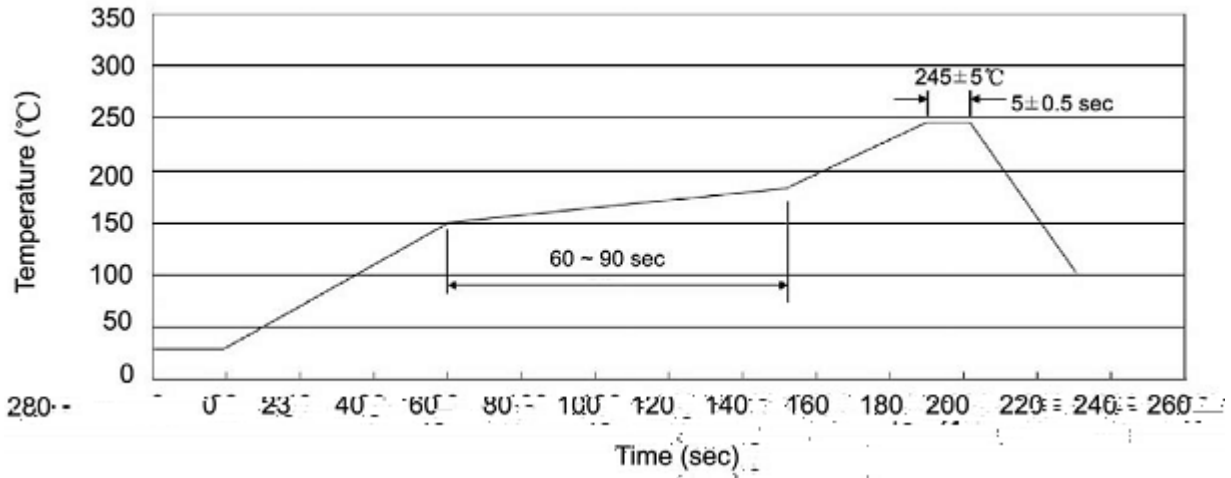
Marking

Type number	Marking code
	





() / Temperature Profile for IR Reflow Soldering(Pb-Free)



说明：

- 、预热温度 ~ °C，时间 ~ °C
- 、峰值温度 ± °C，时间持续为 ± °C ±
- 、焊接制程冷却速度为 ~ °C °C

/ Resistance to Soldering Heat Test Conditions

温度： ± °C 时间： ± ± °C ±

/ Packaging SPEC.

卷盘包装

封装形式	包装数量					包装尺寸 :		
	Units/Reel 只/卷盘	Reels/Inner Box 卷盘/盒	Units/Inner Box 只/盒	Inner Boxes/Outer Box 盒/箱	Units/Outer Box 只/箱	Reel	Inner Box 盒	Outer Box 箱
						"		

/ Notices