





Rev.B Jan-2021

1.2A

MBF

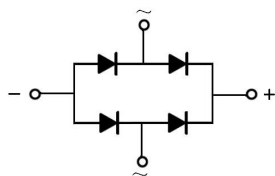
1.2A Surface Mount Glass Passivated Bridge Rectifier, MBF thin package.

100V~1000V

1.2A

Glass Passivated Chip Junction, Reverse Voltage:100to1000V, Forward Current: 1.2A, High Surge Current Capability, Designed for Surface Mount Application.Halogen free product.

General purpose.



PIN	DESCRIPTION
1	Input Pin ( ~ )
2	Input Pin ( ~ )
3	Output Anode ( + )
4	Output Cathode ( - )



See Marking Instructions.

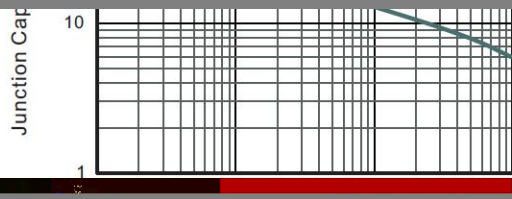
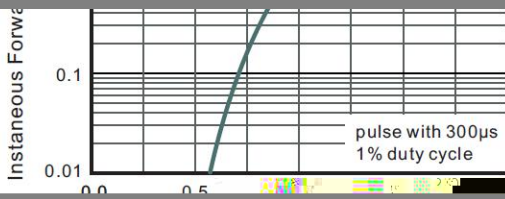
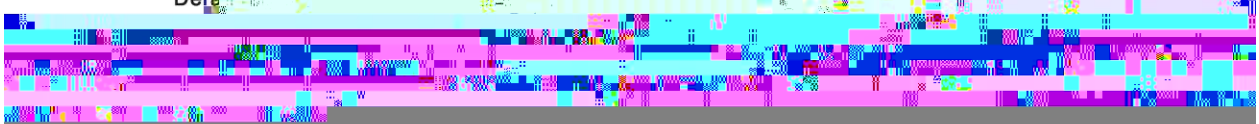


参数 Parameter	符号 Symbol	数值 Rating	单位 Unit
-----------------	--------------	--------------	------------



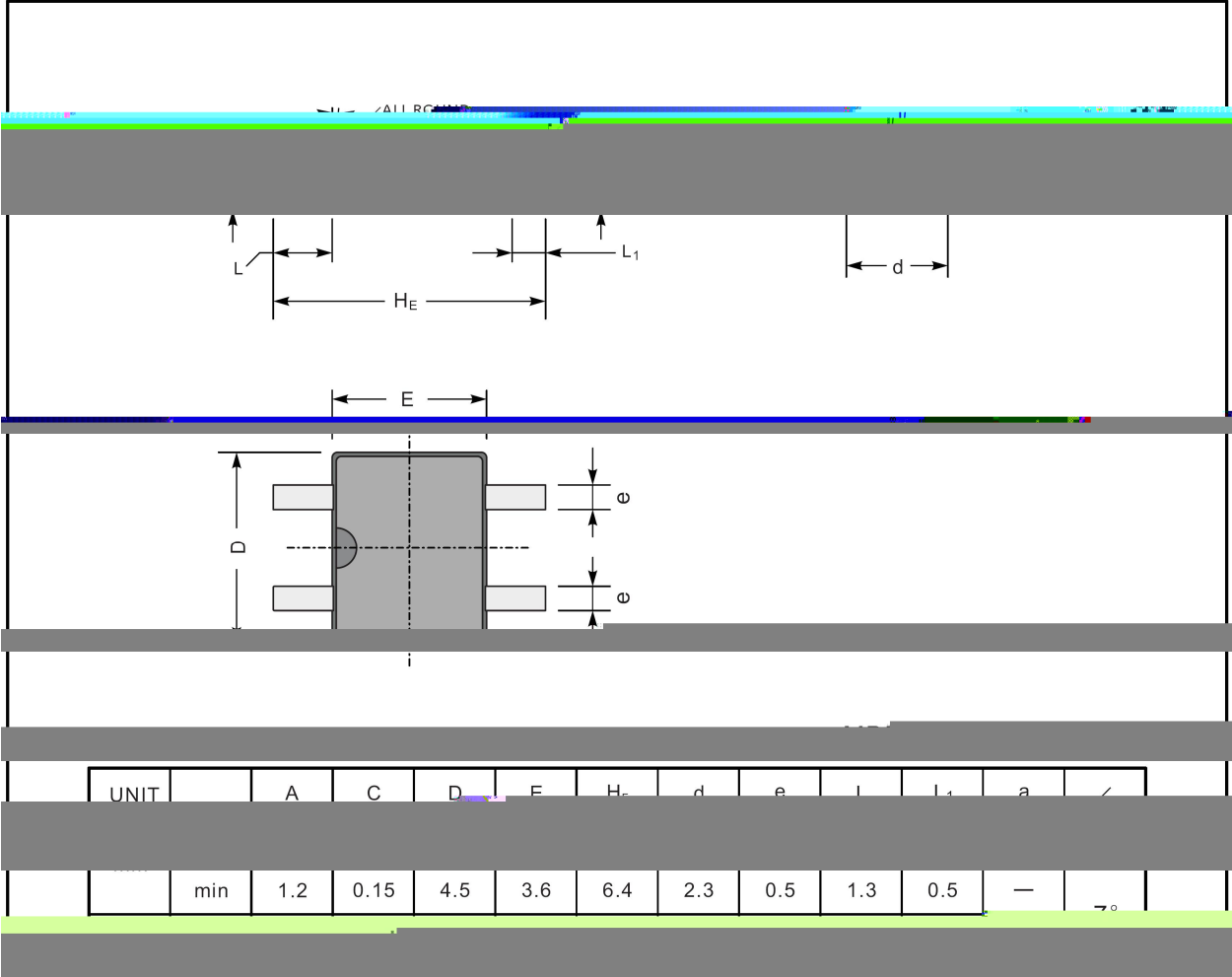
Fig.1 Average Rectified Output Current Derating Curve

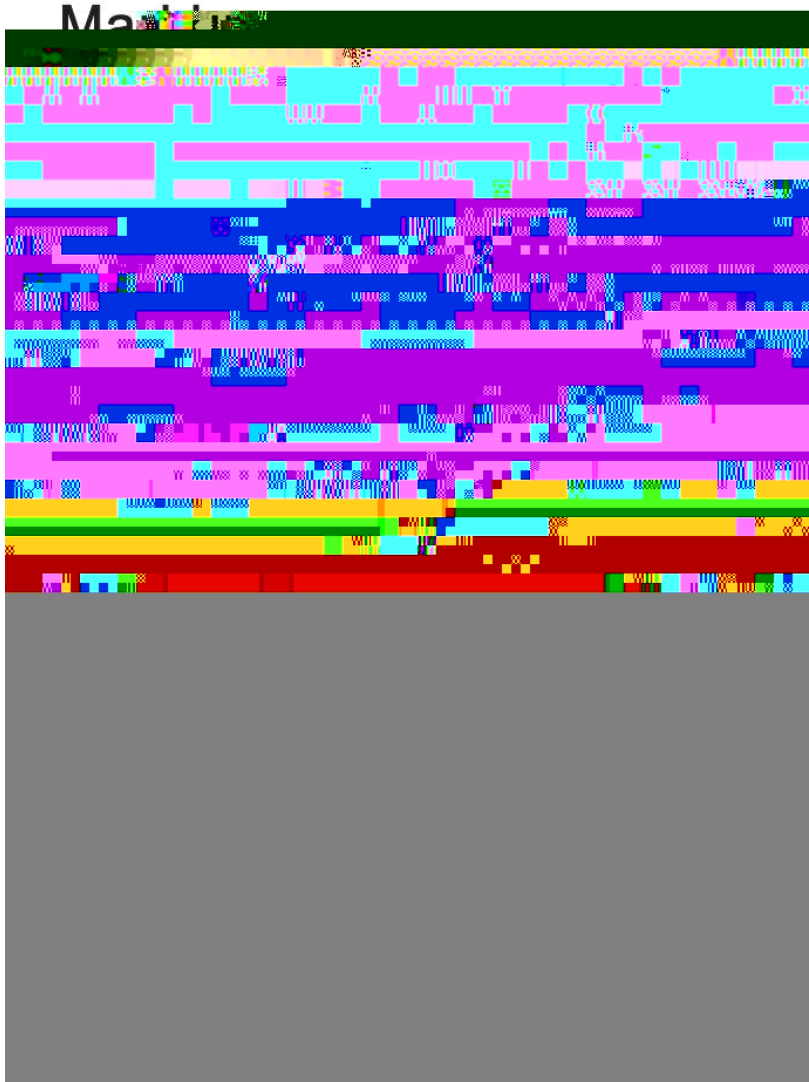
Fig.2 Typical Reverse Characteristics

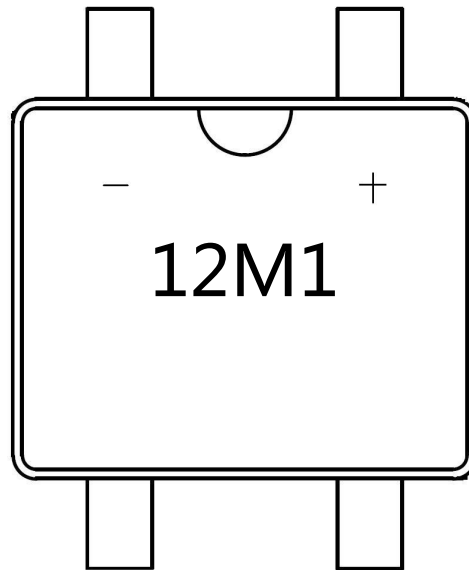




MBF







12M1

\*\*\*\*

1 \*

3 \*

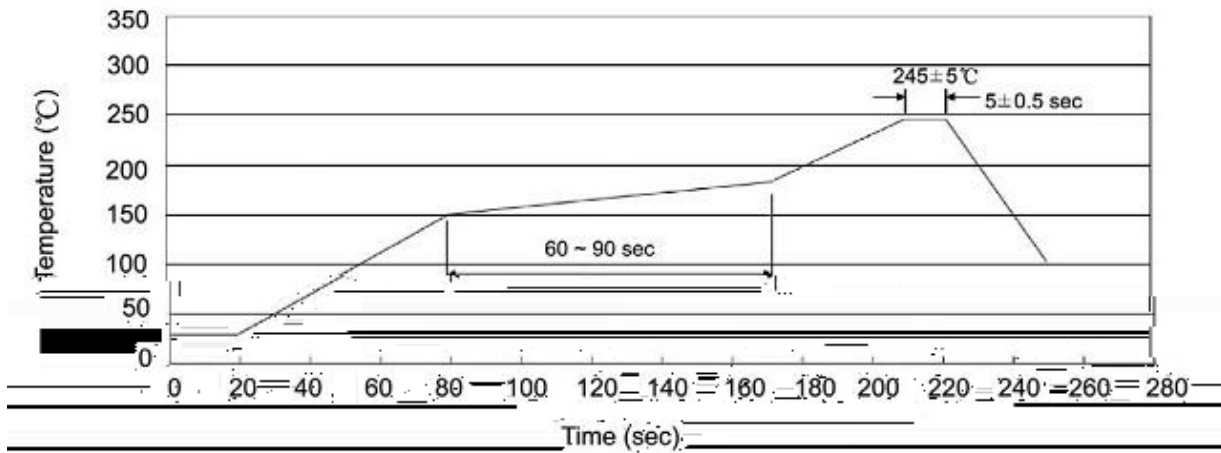
Note:

12M1      Product Type Code

\*\*\*\*      Lot No. Code    The 1st \* means:YM Code    The last 3 \* means:little Lot No  
Code



Temperature Profile for IR Reflow Soldering(Pb-Free)



Note:

- |   |       |     |    |           |  |
|---|-------|-----|----|-----------|--|
| 1 | 150   | 180 | 60 | 90sec;    | 1.Preheating:150~180°C, Time:60~90sec.   |
| 2 | 245±5 |     |    | 5±0.5sec; | 2.Peak Temp.:245±5°C, Duration:5±0.5sec. |
| 3 |       |     | 2  | 10°C/sec. | 3. Cooling Speed: 2~10°C/sec.            |

260±5°C      10±1 sec.      Temp.:260±5°C      Time:10±1 sec

/ REEL

Package Type 封装形式	Units 包装数量					Dimension 包装尺寸 (unit: mm <sup>3</sup> )		
	Units/Reel 只/卷盘	Reels/Inner Box 卷盘/盒	Units/Inner Box 只/盒	Inner Boxes/Outer Box 盒/箱	Units/Outer Box 只/箱	Reel	Inner Box 盒	Outer Box 箱