



, °



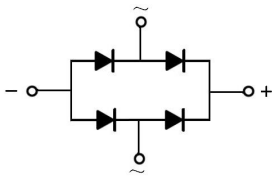
100V~1000V

0.8A

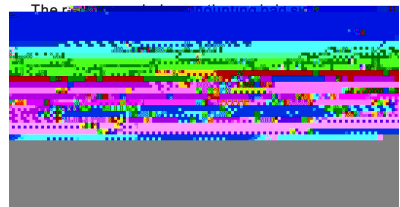
,



.



PIN	DESCRIPTION
1	Input Pin (~)
2	Input Pin (~)
3	Output Anode (+)
4	Output Cathode (-)



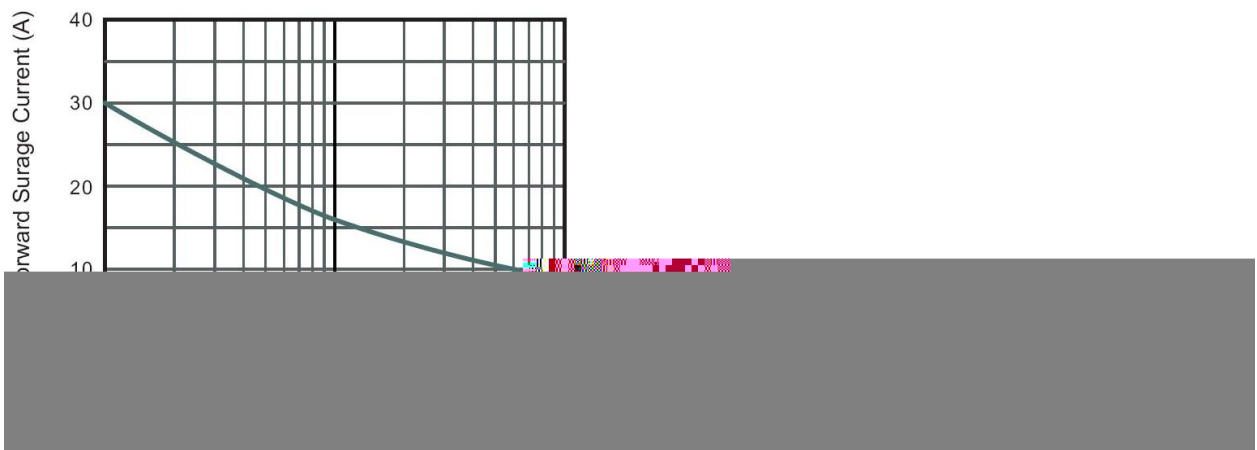
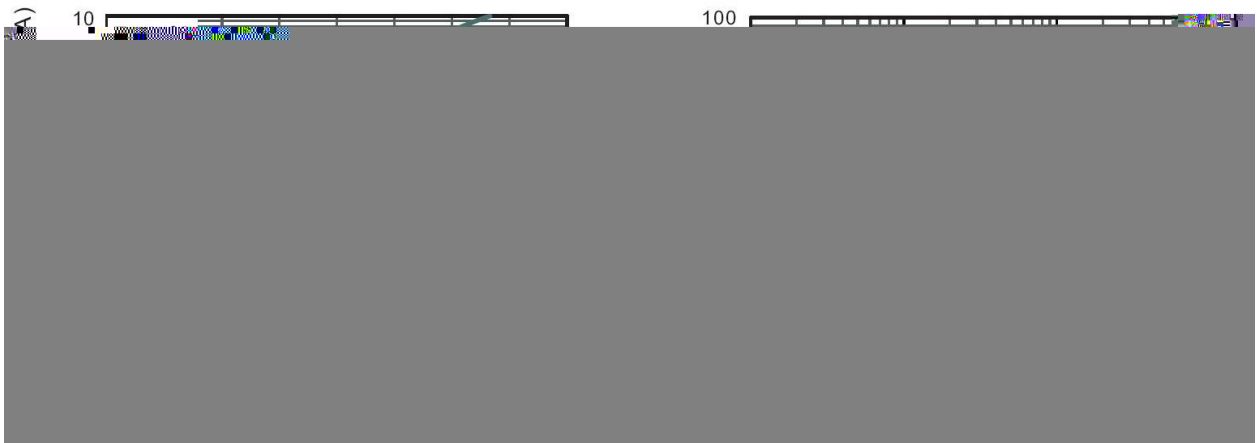


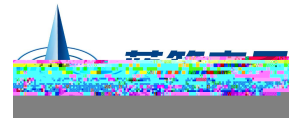
	□	□						□
°C								
)								
)								°C
								°C

)



	□	□ □	数值	□
		°C		μ
		°C		μ





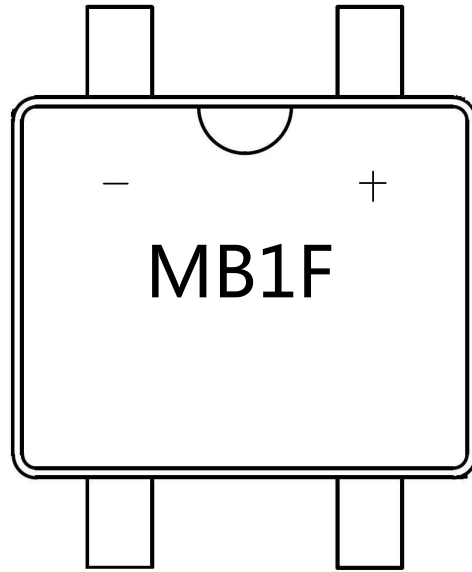
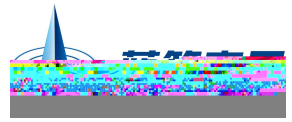
MBF





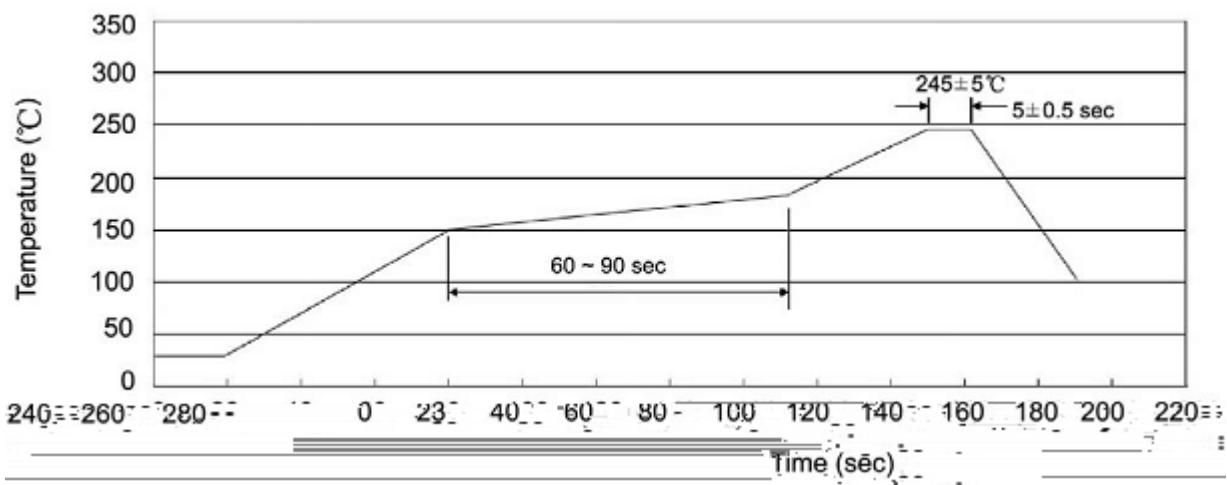
Marking





说明

- : 为型号代码
- : 为生产批号追溯码，第 个 为年月代码，后面 个 为当月小批号代码
- :
- :



±

±

±

±

±

±

±

±

封装形式

包装数量

包装尺寸 :