

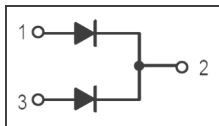
Rev.H Oct.-2018

TO-220

Schottky Barrier Diode in a TO-220 Plastic Package.

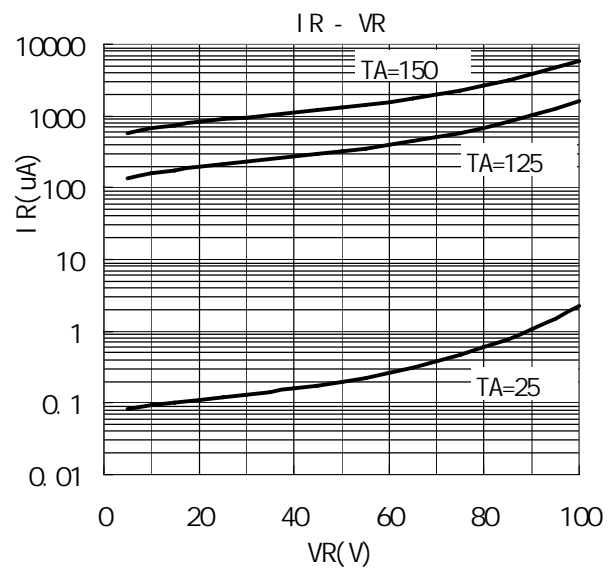
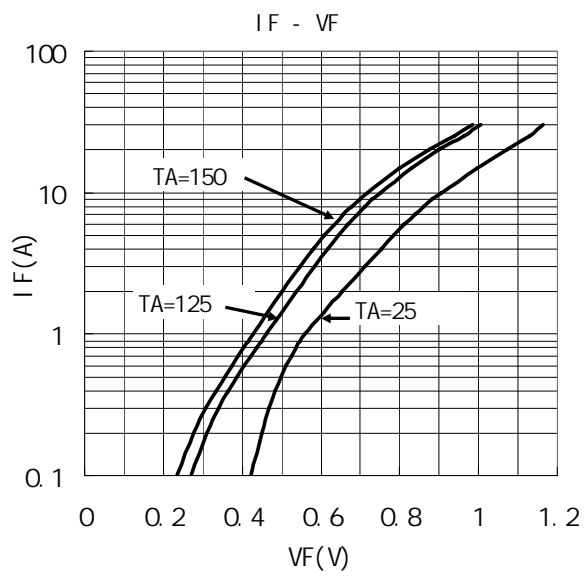
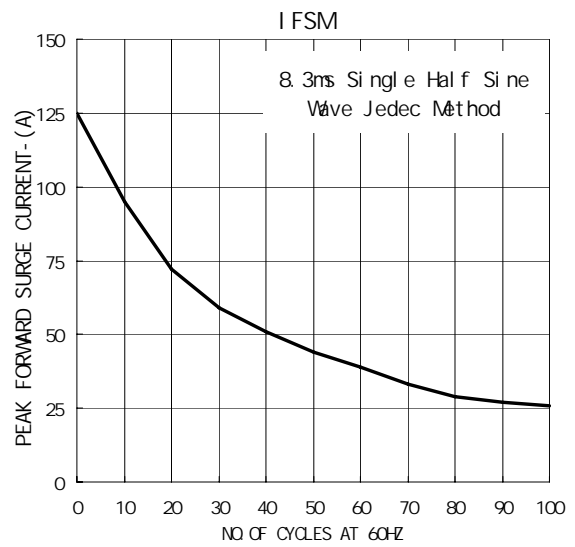
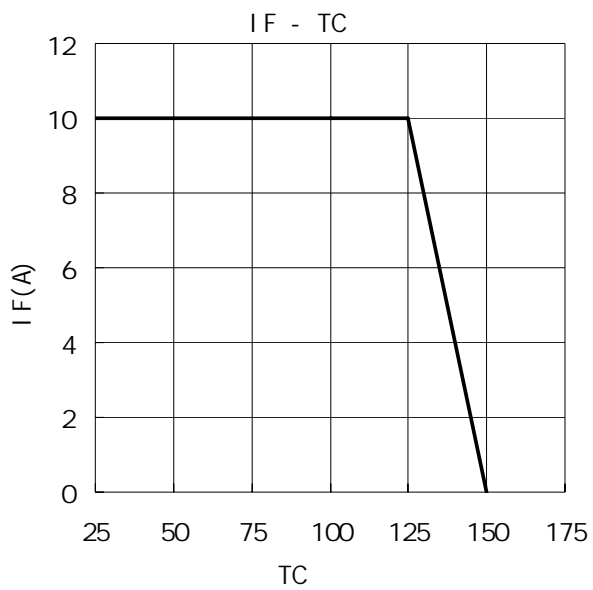
Low power loss, high efficiency.

For use in low voltage, high frequency inverters, free wheeling, and polarity protection applications.

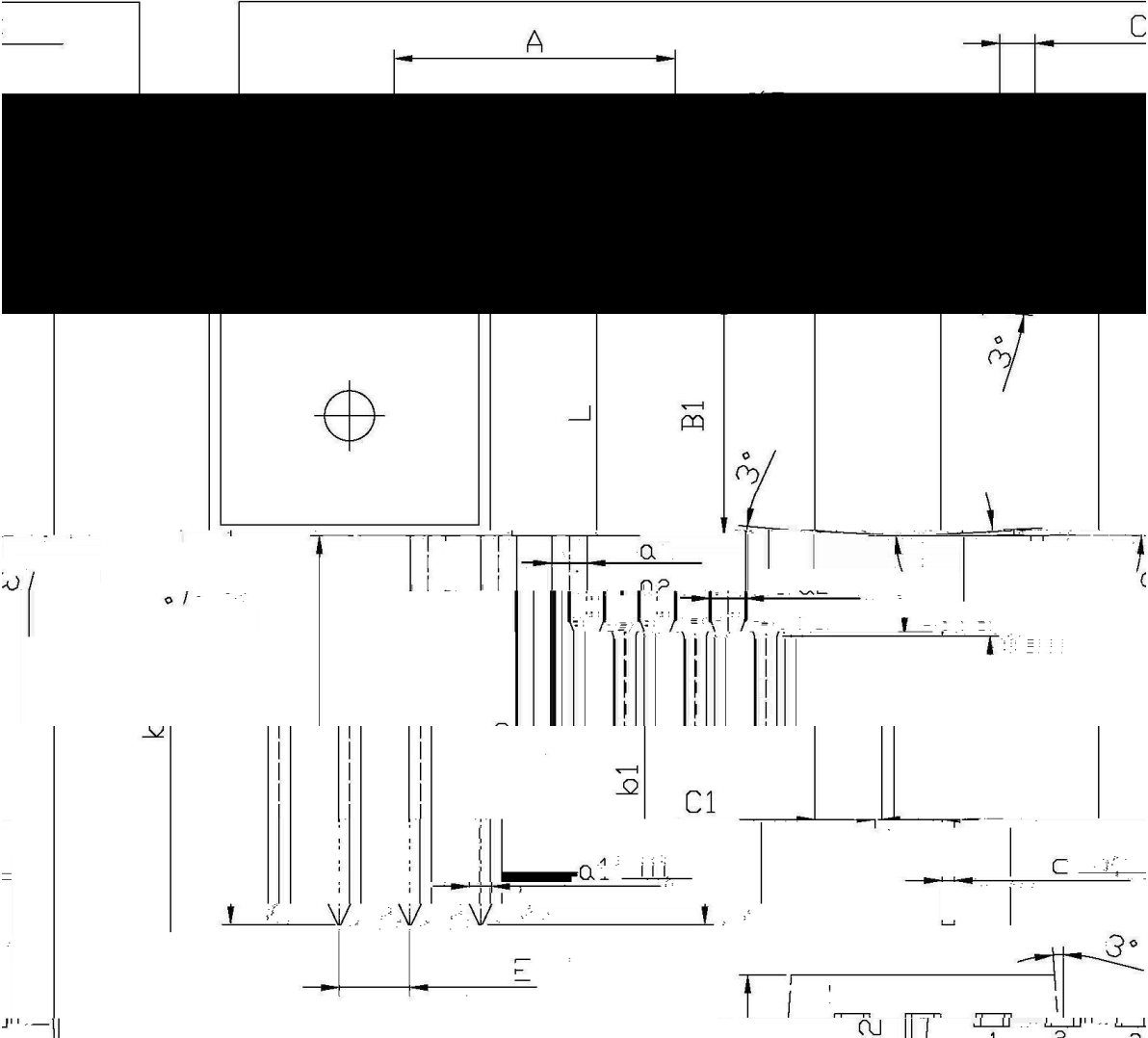


PIN1 Anode PIN 2 Cathode PIN 3 Anode

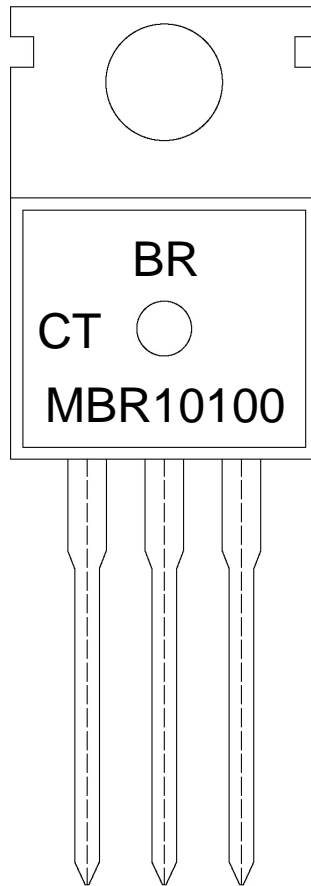
See Marking Instructions.



mm TO-220 单位:



Symbol	Dimensions in mils		Symbol	Dimensions in millimeters	
	Min	Max		Min	Max
A	9.8	10.2	C	1.2	1.4
B	3.56	3.64	B1	6.3	6.7
B1	9.0	9.4	L	15.7	16.0
a	1.2	1.3	b1	0.4	0.6
a1	1.25	1.45	C1	0.2	0.3



BR

MBR10100

CT:

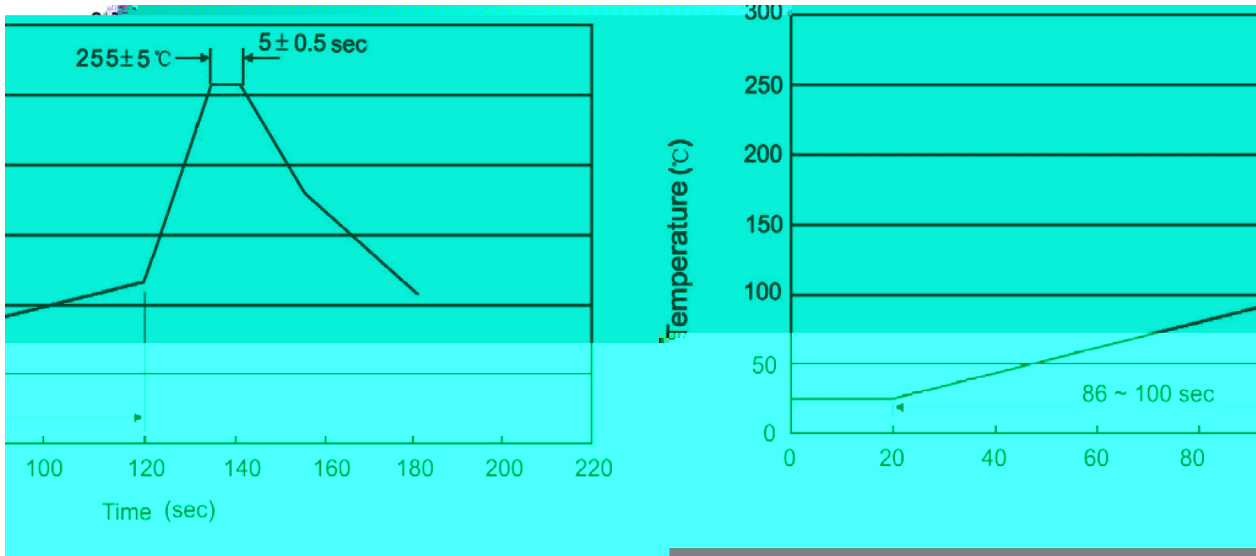
Note:

BR: Company Code

MBR10100 Product Type.

CT: Internal Structure

****: Lot No. Code, code change with Lot No.


Note:

- 1 25 150 60 90sec;
- 2 255±5 5±0.5sec;
- 3 2 10 /sec.

- 1.Preheating:25~150 , Time:60~90sec.
- 2.Peak Temp.:255±5 , Duration:5±0.5sec.
3. Cooling Speed: 2~10 /sec.

270±5

10±1 sec.

Temp.:270±5

Time:10±1 sec

/ BULK

Package Type 封装形式	Units 包装数量					Dimension 包装尺寸 (unit: mm ³)		
	只袋	袋盒	只盒	盒箱	只箱	袋	盒	箱

/ TUBE

Package Type 封装形式	Units 包装数量					Dimension 包装尺寸 (unit: mm ³)		
	只套管	套管盒	只盒	盒箱	只箱	套管	盒	箱