

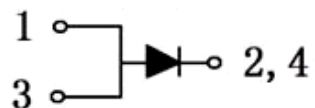
/ Descriptions

TO-220

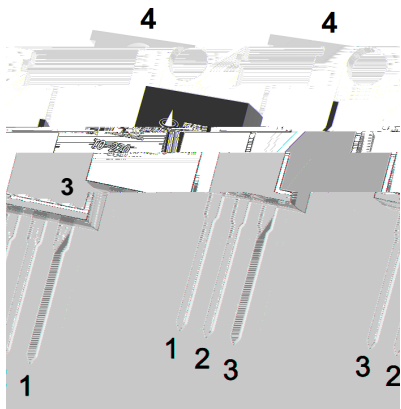
/ Features

/ Applications

/ Equivalent Circuit



/ Pinning

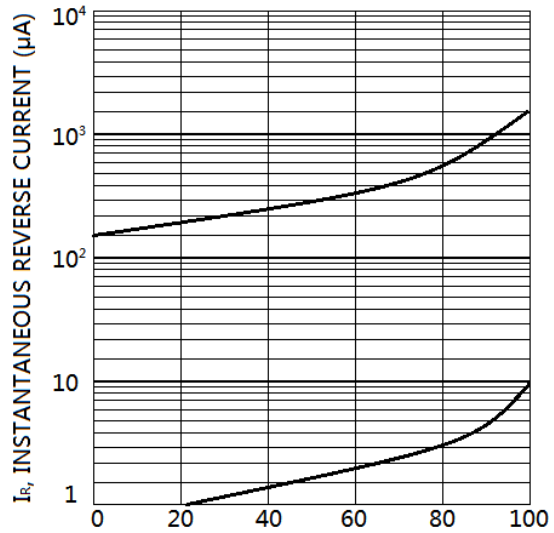
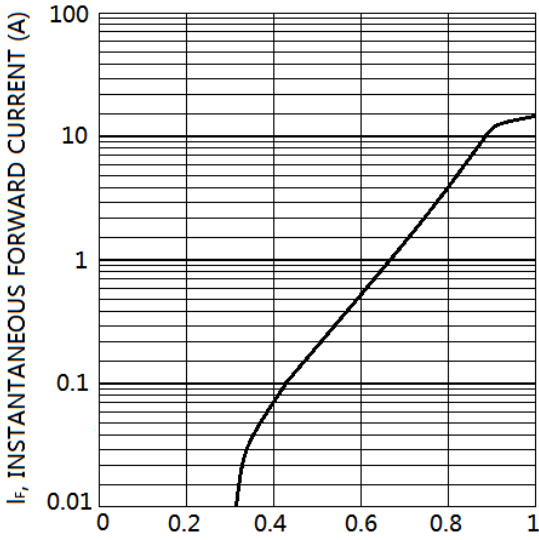
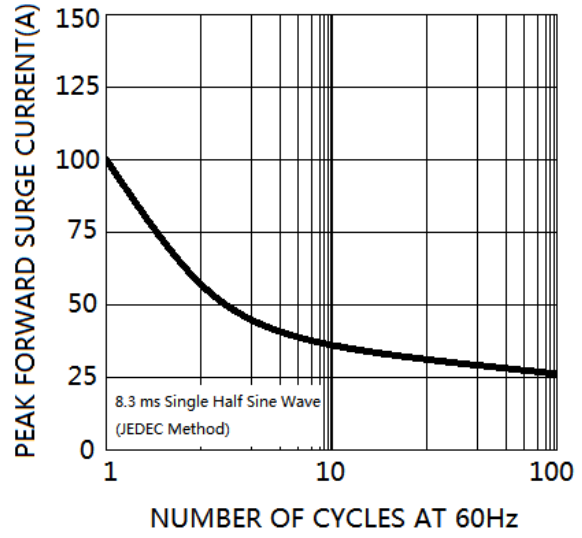
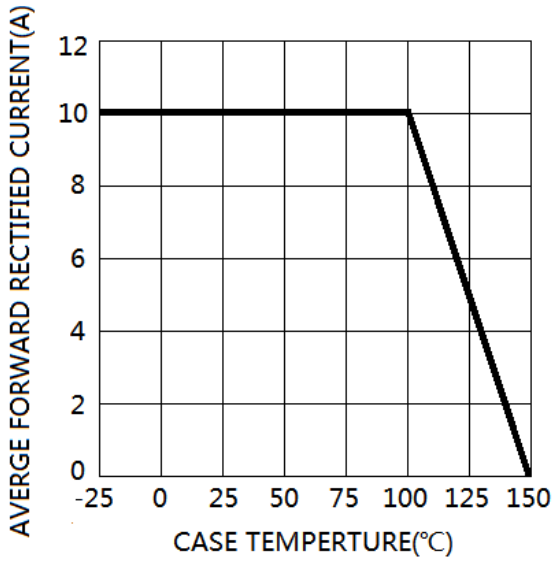


/ Marking

/ Absolute Maximum Ratings(Ta=25)

/ Electrical Characteristics(Ta=25)

/ Electrical Characteristic Curve



Forward Voltage (V)

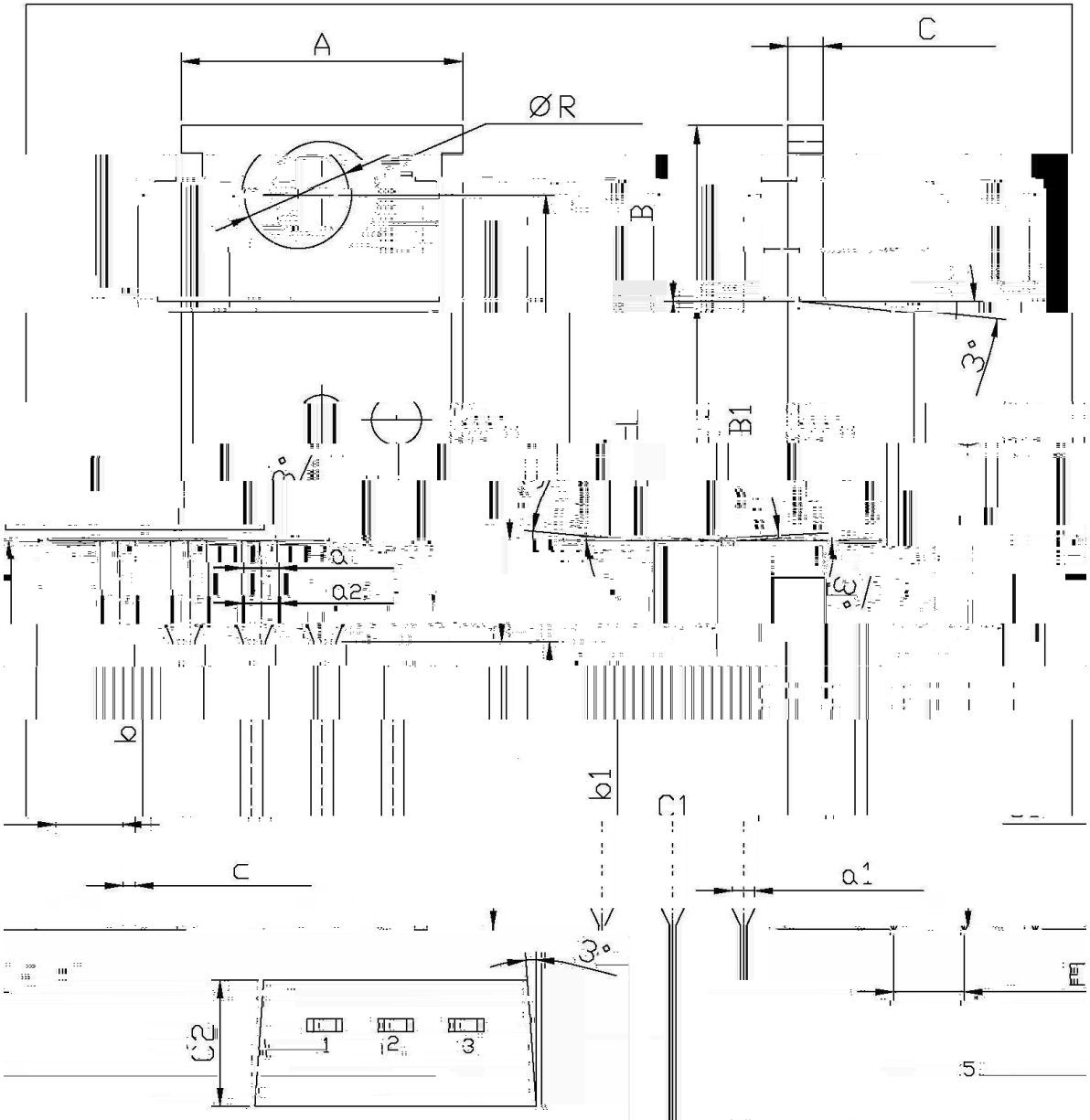
Instantaneous Reverse Voltage (V)

Instantaneous Forward Current (A)

/ Package Dimensions

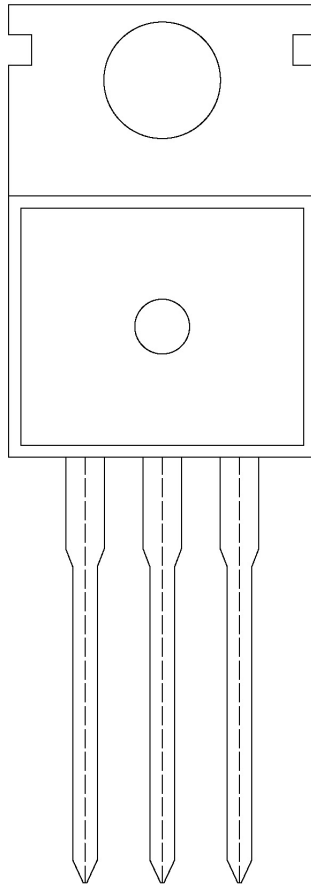
TO-220

单位: mm



Dimensions In Millimeters			Dimensions In Millimeters		
Symbol	Min	Max	Symbol	Min	Max
A	9.8	10.2	C	12	14
R	3.56	3.64	B	6.3	6.7
L	15.7	16.1	B1	9.0	9.4
b	12.6	13.6	c1	2.54	2.6

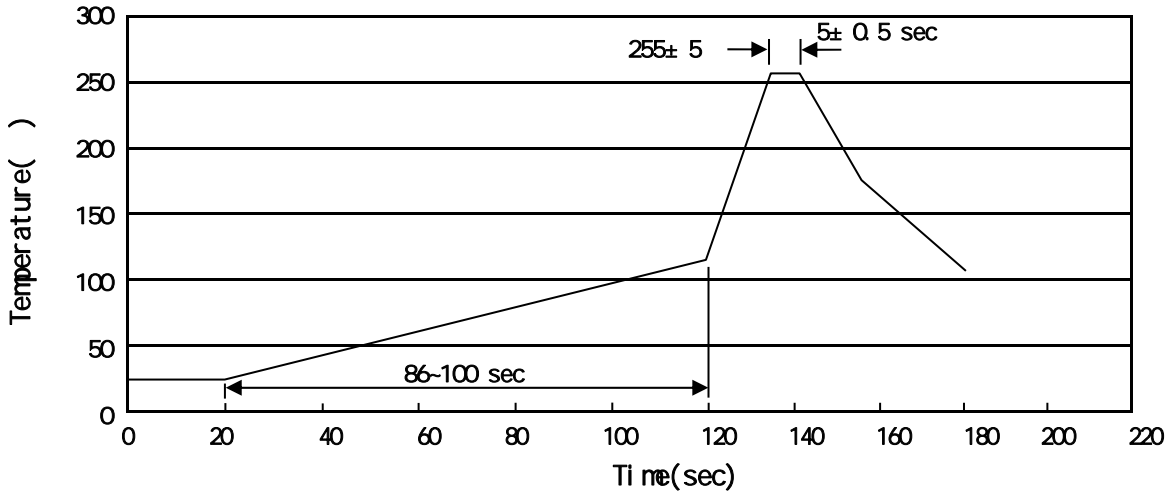
/ Marking Instructions



BR
MBR10300

MBR10300

() / Temperature Profile for Dip Soldering(Pb-Free)



± ± ± ±

/ Resistance to Soldering Heat Test Conditions

± ±

/ Packaging SPEC.

	Units/Bag /	Bags/Inner Box /	Units/Inner Box /	Inner Boxes/Outer Box /	Units/Outer Box /	Bag	Inner Box	Outer Box

	Units/Tube /	Tubes/Inner Box /	Units/Inner Box /	Inner Boxes/Outer Box /	Units/Outer Box /	Tube	Inner Box	Outer Box

/ Notices