

MBRA10200CT

Rev.E Mar.-2016

/ Descriptions

KF \$) -)

Schottky Diode in a TO-262 Plastic Package.

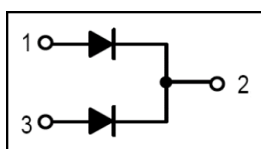
/ Features

Low power loss, high efficiency.

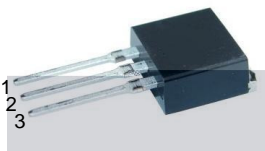
/ Applications

For use in low voltage,high frequency inverters, free wheeling, and polarity protection applications.

/ Equivalent Circuit



/ Pinning



PIN1 Anode PIN 2 Cathode PIN 3 Anode

/ h_{FE} Classifications & Marking

See Marking Instructions.

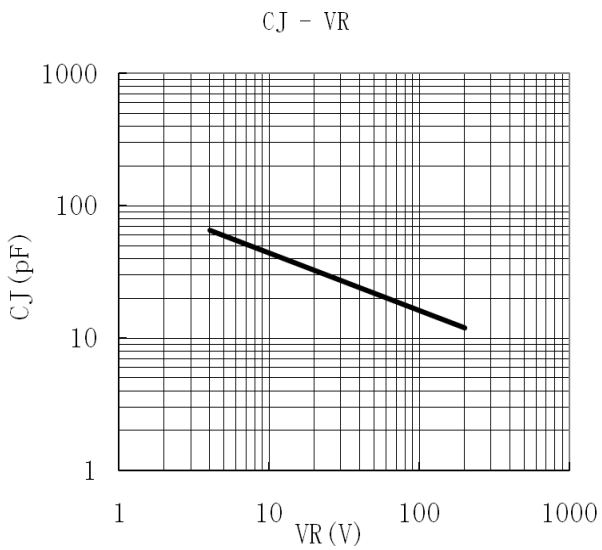
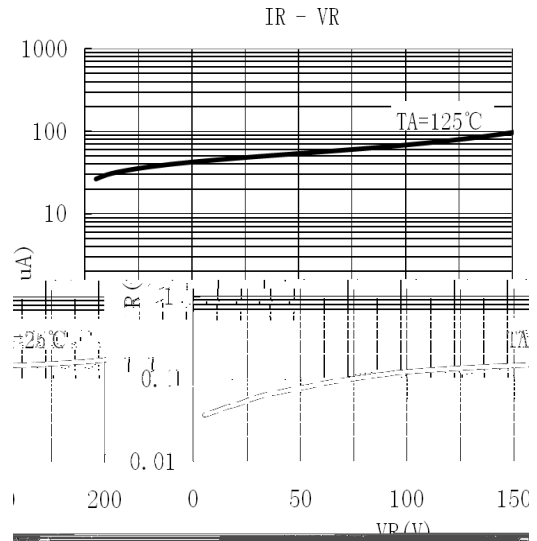
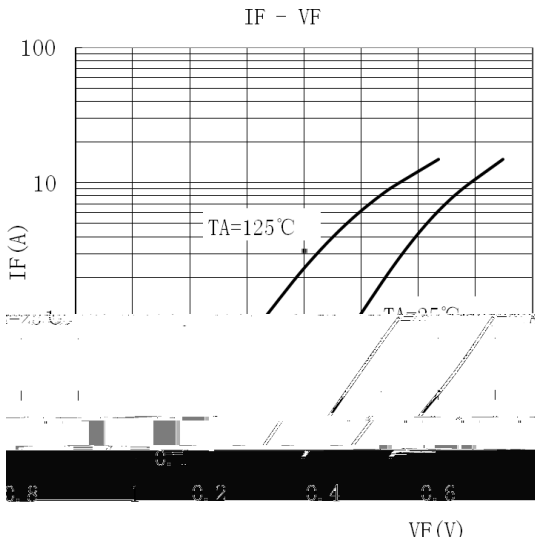
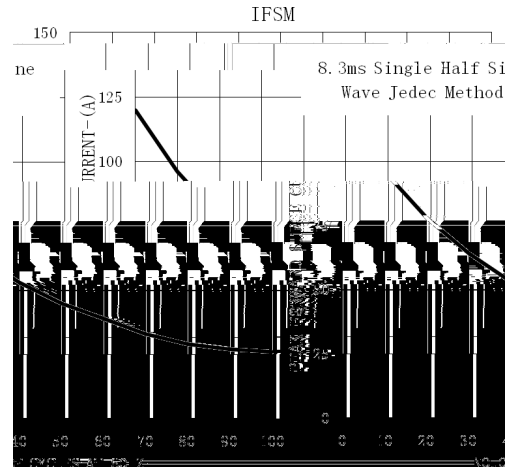
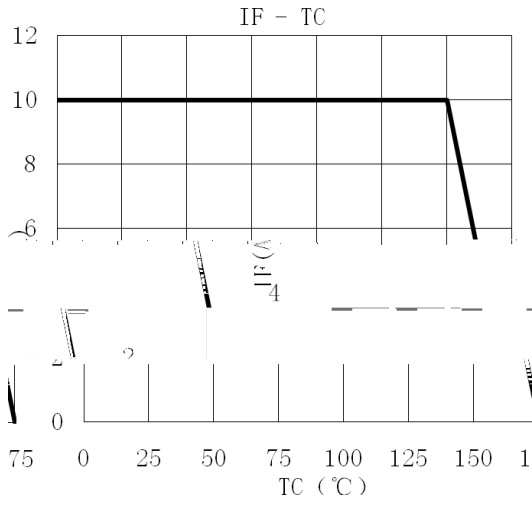
/ Absolute Maximum Ratings(Ta=25)

Parameter	Symbol	Rating	Unit
Peak Repetitive Reverse Voltage	V_{RRM}	200	V
Average Rectified Forward Current	$I_{F(AV)}$	10	A
Peak Repetitive Forward Current	I_{FRM}	10	A
Non Repetitive Peak Surge Current	I_{FSM}	150	A
Peak Repetitive Reverse Surge Current	I_{RRM}	0.5	A
Thermal Resistance Junction to Case	R_{Jc}	2.5	/W
Junction and Storage Temperature Range	$T_j T_{stg}$	-65~150	

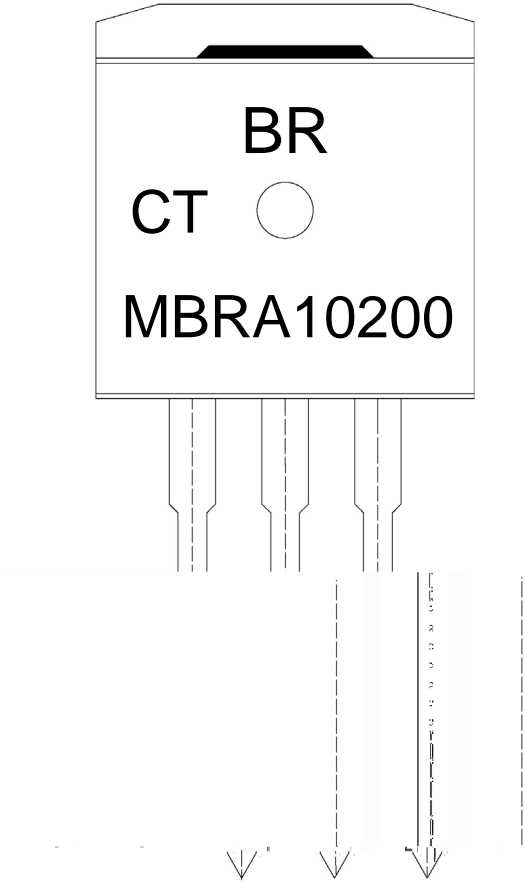
/ Electrical Characteristics(Ta=25)

Parameter	Symbol	Test Conditions	Min	Typ	Max	Unit
Reverse Voltage	V_R		200			V
Forward Voltage	V_{FM}	$I_F=5.0A(T_C=25^\circ C)$			0.99	V
		$I_F=5.0A(T_C=125^\circ C)$			0.87	V
Instantaneous Reverse Current	I_{RM}	$V_R=200V(T_C=25^\circ C)$			0.15	mA
		$V_R=200V(T_C=125^\circ C)$			150	mA
Voltage Rate of Change	dv/dt				10000	V/ μ s

/ Electrical Characteristic Curve



/ Marking Instructions

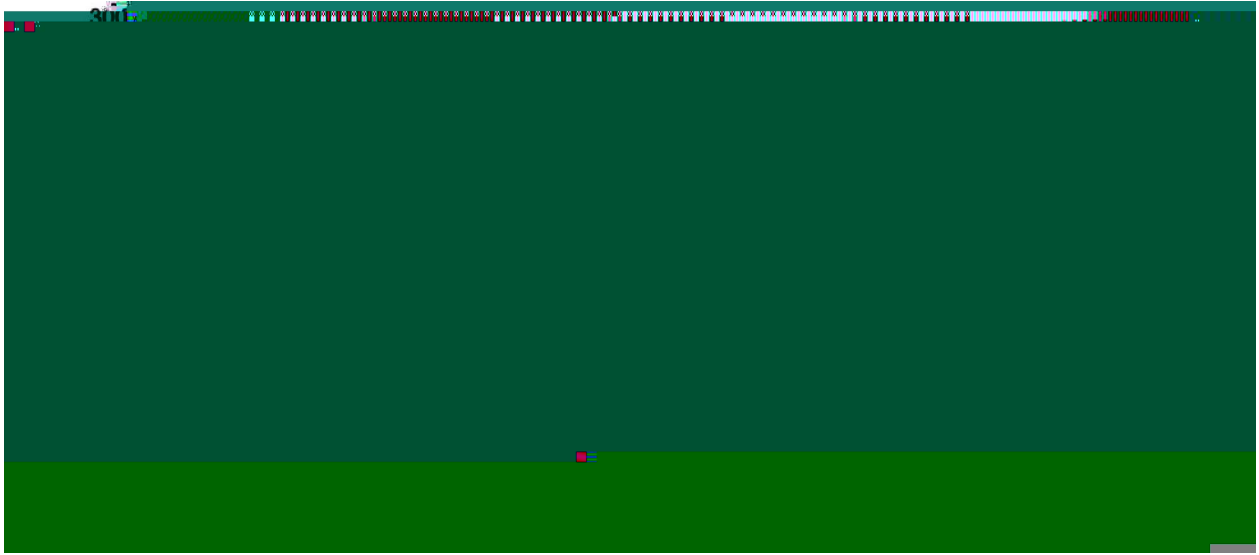


9|
D 9| 8(')'
: K1
!!!!

Note:

- BR: Company Code
- MBRA10200 Product Type.
- CT: Internal Structure
- ****: Lot No. Code, code change with Lot No.

() / Temperature Profile for Dip Soldering(Pb-Free)



Note:

- | | | | | | |
|---|--------|-----|------------|--------|---|
| 1 | 25 | 150 | 60 | 90sec; | 1.Preheating:25~150 , Time:60~90sec. |
| 2 | 255..5 | | 5..0.5sec; | | 2.Peak Temp.:255..5 , Duration:5..0.5sec. |
| 3 | | 2 | 10 | /sec. | 3. Cooling Speed: 2~10 /sec. |

/ Resistance to Soldering Heat Test Conditions

270..5 10..1 sec. Temp.:270±5 Time:10±1 sec

/ Packaging SPEC.

/ TUBE

Package Type 封装形式	Units 包装数量					Dimension 包装尺寸 (unit: mm ³)		
	只 套管	套管 盒	只 盒	盒 箱	只 箱	套管	盒	箱

/ Notices