

Rev. H Oct.-2018

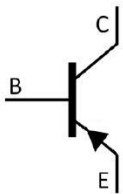
TO-220

PNP

Silicon PNP transistor in a TO-220 Plastic Package.

Large DC current($I_C=10A$),high f_T ($f_T \geq 2MHz$).

General purpose and switching applications.



PIN1 Base

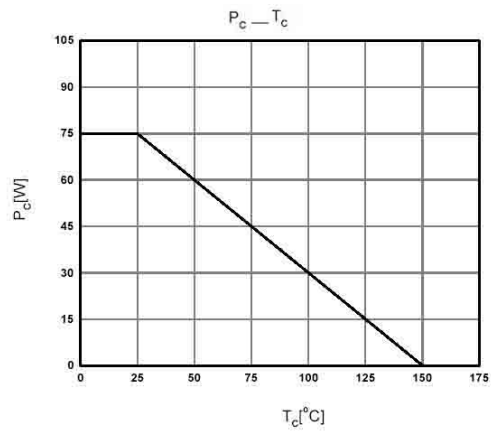
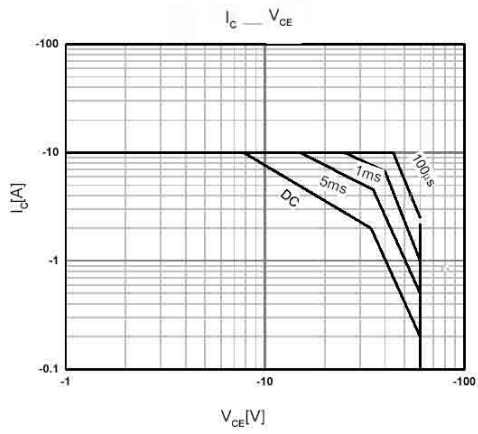
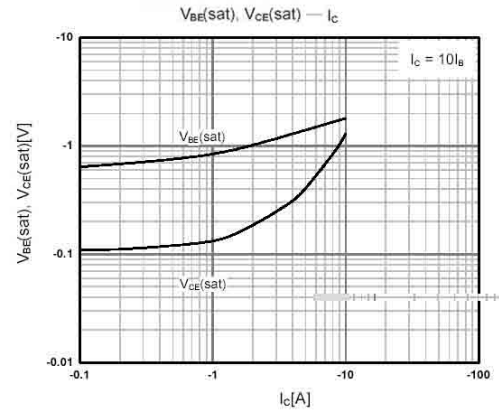
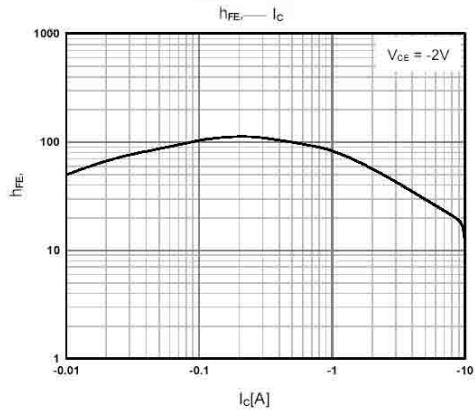
PIN 2 Collector

PIN 3 Emitter

See Marking Instructions.

Parameter	Symbol	Rating	Unit
Collector to Base Voltage	V_{CBO}	-70	V
Collector to Emitter Voltage	V_{CEO}	-60	V
Emitter to Base Voltage	V_{EBO}	-5.0	V
Collector Current - Continuous	I_C	-10	A
Base Current - Continuous	I_B	-6.0	A
Collector Power Dissipation	P_C	2.0	W
	$P_C(T_C=25^\circ\text{C})$	75	W
Junction Temperature	T_j	150	$^\circ\text{C}$
Storage Temperature Range	T_{stg}	-55 150	$^\circ\text{C}$

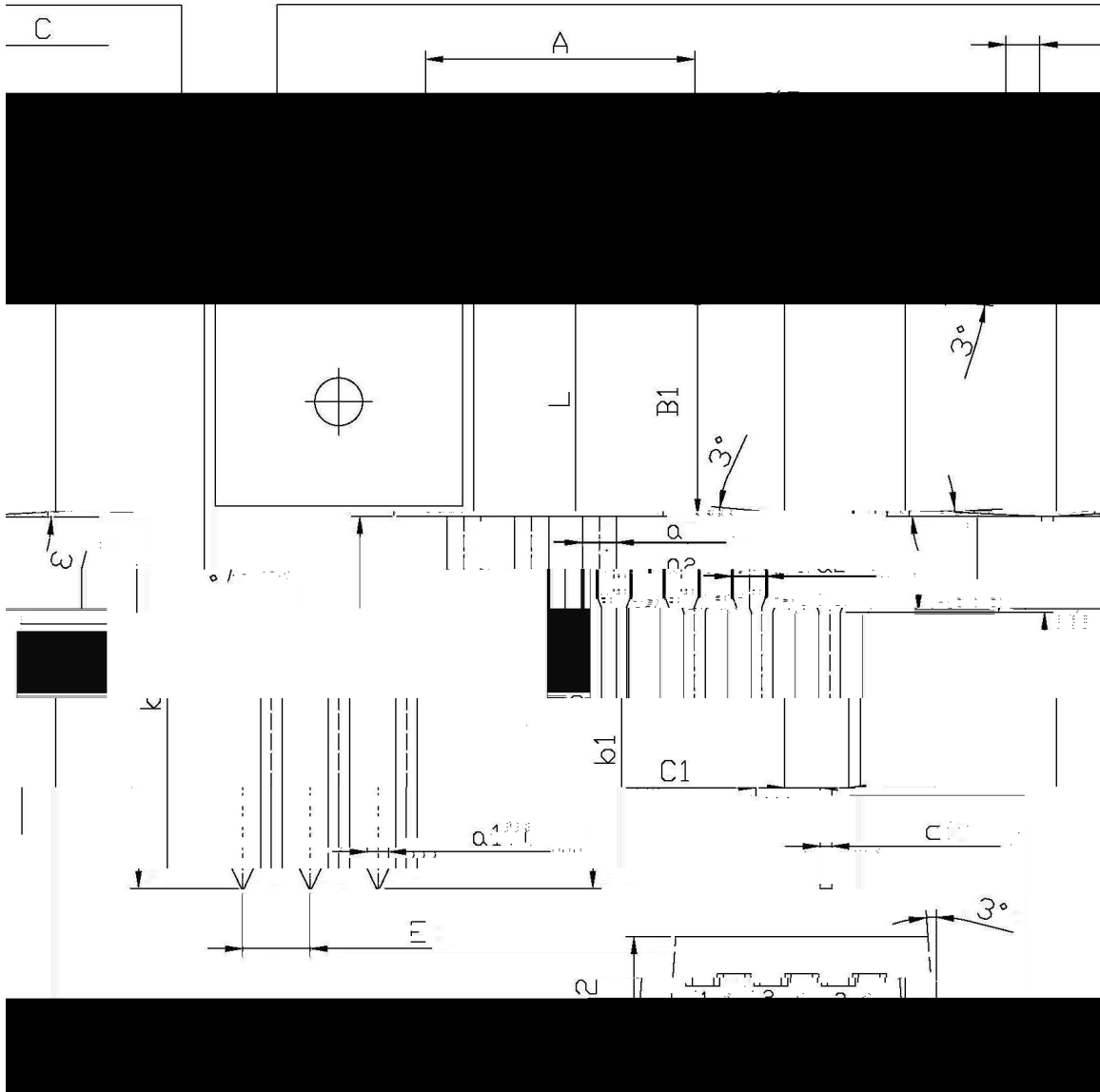
Parameter	Symbol	Test Conditions	Min	Typ	Max	Unit
Collector to Emitter Breakdown Voltage	V_{CEO}	$I_C=-200\text{mA}$ $I_B=0$	-60			V
Collector Cut-Off Current	I_{CEO}	$V_{CE}=-30\text{V}$ $I_B=0$			-700	μA
Emitter Cut-Off Current	I_{EBO}	$V_{EB}=-5.0\text{V}$ $I_C=0$			-5.0	mA
Collector Cut-Off Current	I_{CEX}	$V_{BE(off)}=1.5\text{V}$ $V_{CE}=-70\text{V}$			-1.0	mA
DC Current Gain	$h_{FE(1)}$	$V_{CE}=-4.0\text{V}$ $I_C=-4.0\text{A}$	20		100	
	$h_{FE(2)}$	$V_{CE}=-4.0\text{V}$ $I_C=-10\text{A}$	5.0			
Collector to Emitter Saturation Voltage	$V_{CE(sat)(1)}$	$I_C=-4.0\text{A}$ $I_B=-0.4\text{A}$			-1.1	V
	$V_{CE(sat)(2)}$	$I_C=-10\text{A}$ $I_B=-3.3\text{A}$			-8.0	V
Base to Emitter On Voltage	$V_{BE(on)}$	$V_{CE}=-4.0\text{V}$ $I_C=-4.0\text{A}$			-1.8	V
Transition Frequency	f_T	$V_{CE}=-10\text{V}$ $I_C=-500\text{mA}$	2.0			MHz



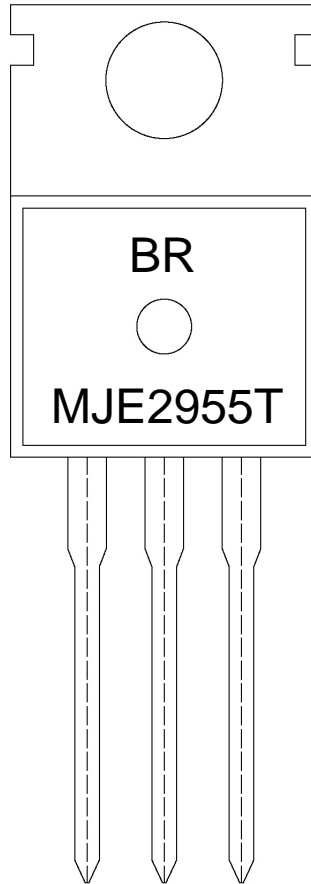
mm

TO-220

单位:



Symbol	Dimensions in Millimeters		Symbol	Dimensions in Millimeters	
	Min	Max		Min	Max
A	9.8	10.2	C	1.2	1.4
R	3.56	3.64	B	6.3	6.7
	9.4			15.7	16.1
	2.6		B1		9.0
	0.7		b1	9.6	10.6
	0.4	0.6	a	1.22	1.32
	1.7	1.7	c1	2.24	2.74
				0.2	1.25
					1.14



BR

MJE2955T

Note:

BR: Company Code

MJE2955T: Product Type.

****: Lot No. Code, code change with Lot No.



- | | |
|--|---|
| 1 25 150 60 90sec;
2 255±5 5±0.5sec;
3 2 10 /sec. | Note:
1.Preheating:25~150 , Time:60~90sec.
2.Peak Temp.:255±5 , Duration:5±0.5sec.
3. Cooling Speed: 2~10 /sec. |
|--|---|

270±5 10±1 sec. Temp.:270±5℃ Time:10±1 sec

/ BULK

Package Type	Units				Dimension (unit mm ³)		

/ TUBE

Package Type	Units				Dimension (unit mm ³)		