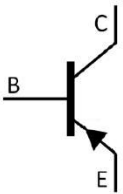


/ Descriptions

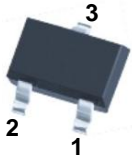
/ Features

/ Applications

/ Equivalent Circuit



/ Pinning

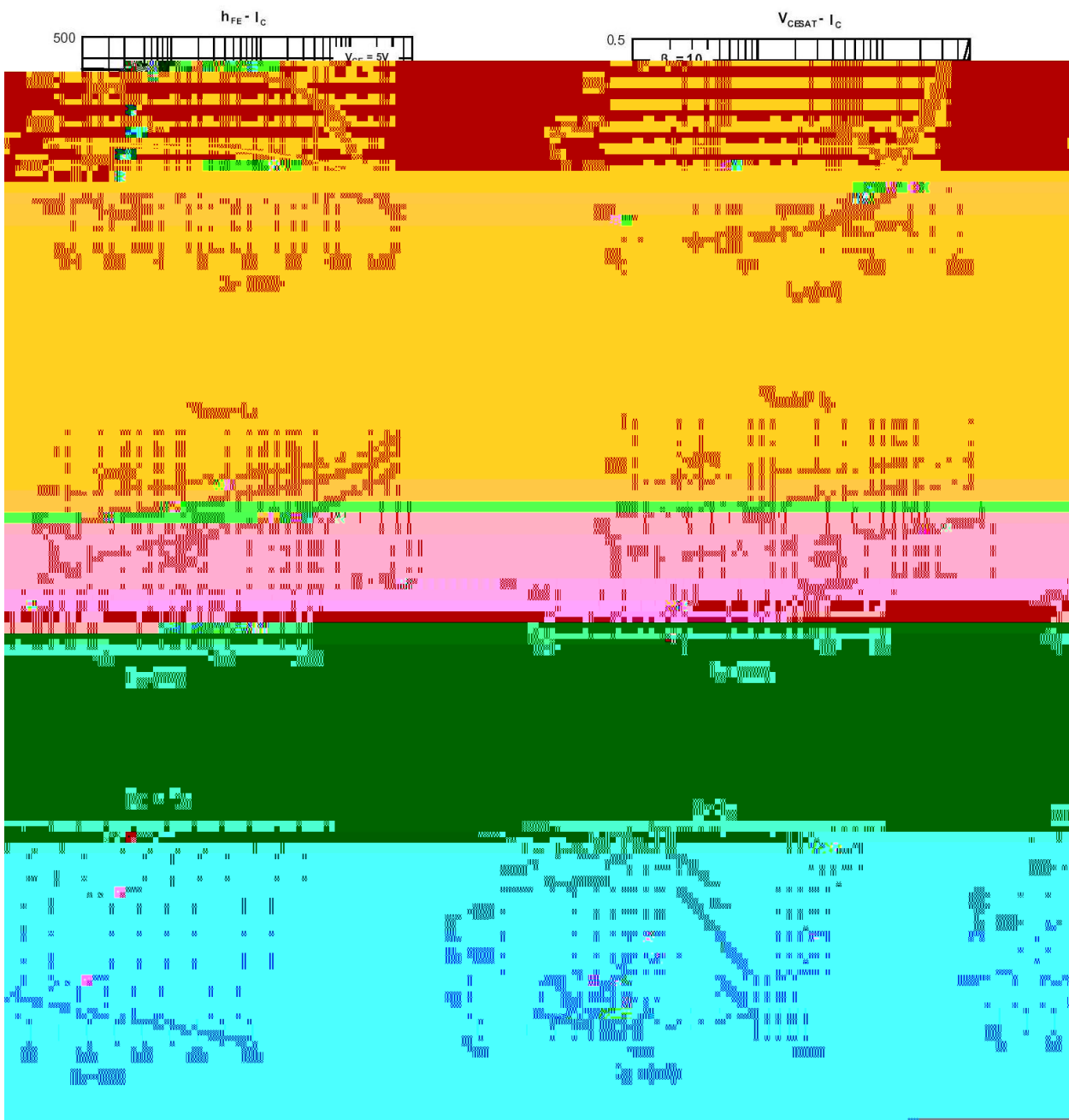


/ Marking

--	--



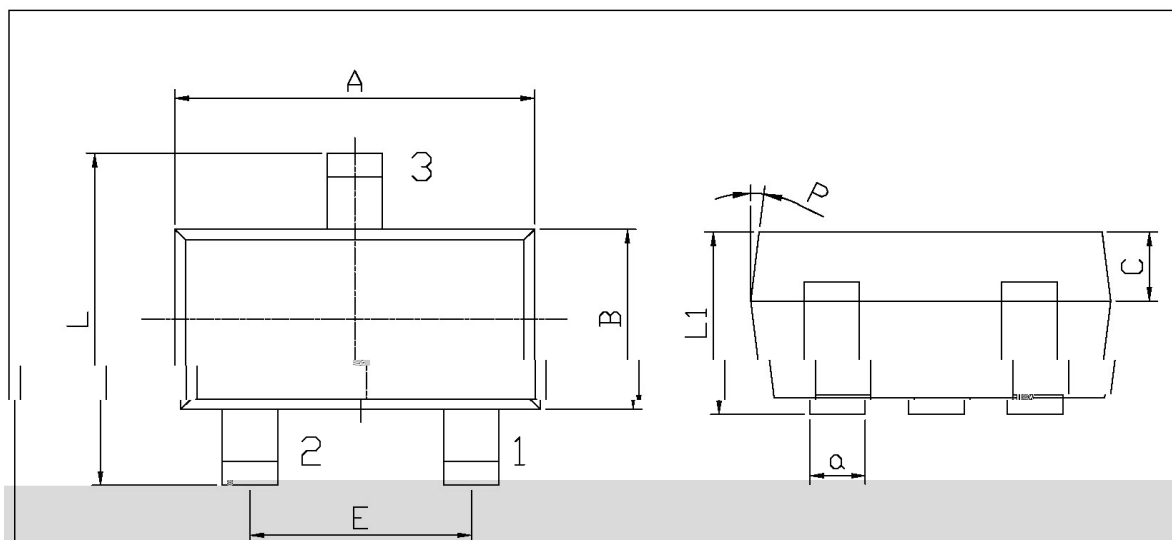
/ Electrical Characteristic Curve



/ Package Dimensions

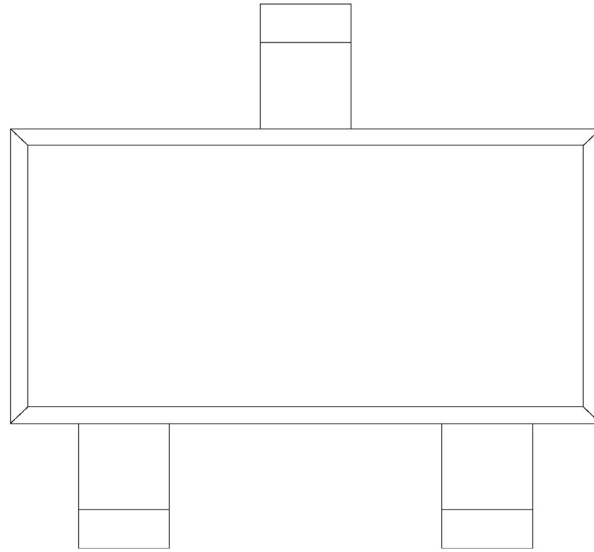
SOT-323

单位: mm

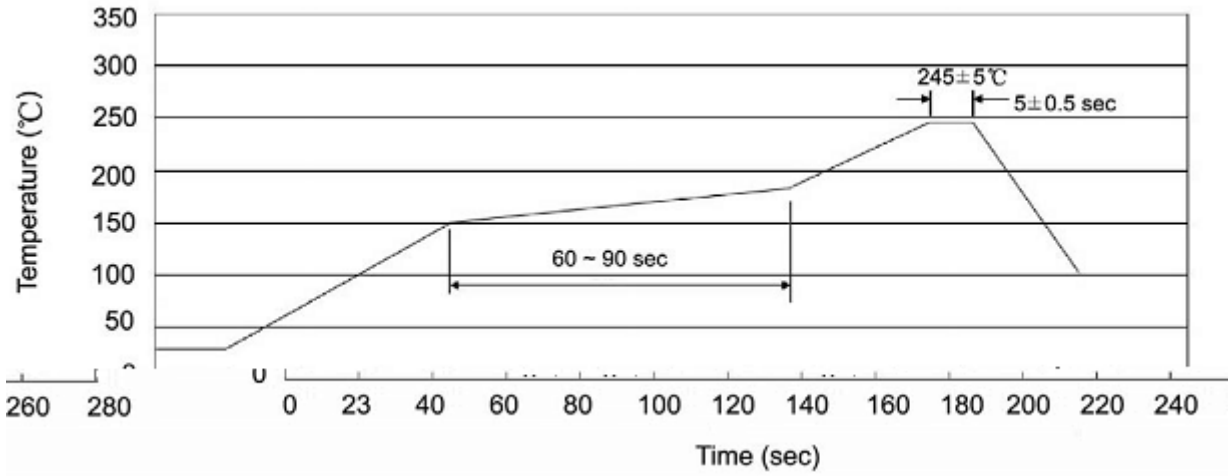


Symbol	Dimensions In Millimeters		Symbol	Dimensions In Millimeters	
	Min	Max		Min	Max
A	1.95	2.35	C	0.30	0.50
L	2.00	2.2	L1	0.85	1.15
E	1.20	1.40	a	0.20	0.40

/ Marking Instructions



( ) / K\d g\iXk i\`Gif]`d`]fi`@`l`]\`fn`Jfd` \i`e`^ZGY\$`i`\\z



/ Resistance to Soldering Heat Test Conditions

/ Packaging SPEC.

封装形式	包装数量					包装尺寸 :		
	Units/Reel 只/卷盘	Reels/Inner Box 卷盘/盒	Units/Inner Box 只/盒	Inner Boxes/Outer Box 盒/箱	Units/Outer Box 只/箱	Reel	Inner Box 盒	Outer Box 箱
SOT-323	3,000	10	30,000	6	180,000	7" ×8	180×120×180	390×385×205

/ Notices