

MPSA13

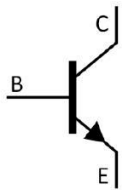
/ Descriptions

TO-92 NPN

/ Features

/ Applications

/ Equivalent Circuit



/ Pinning



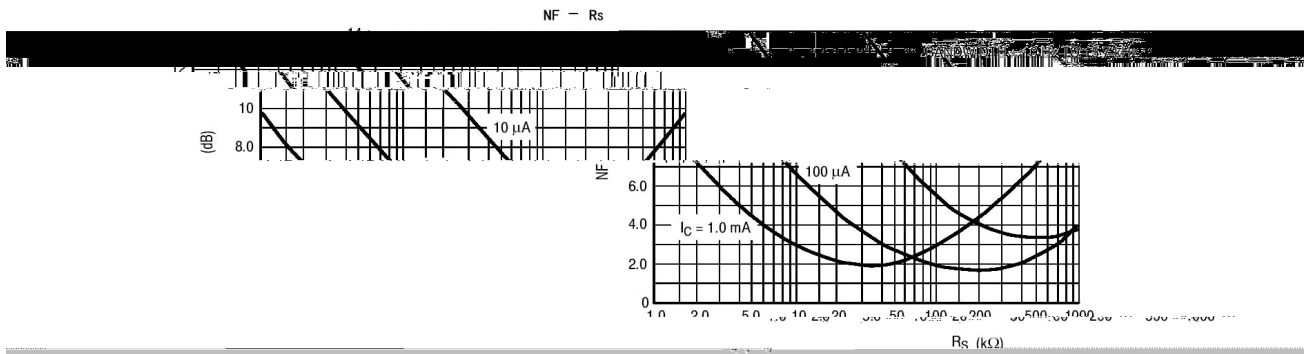
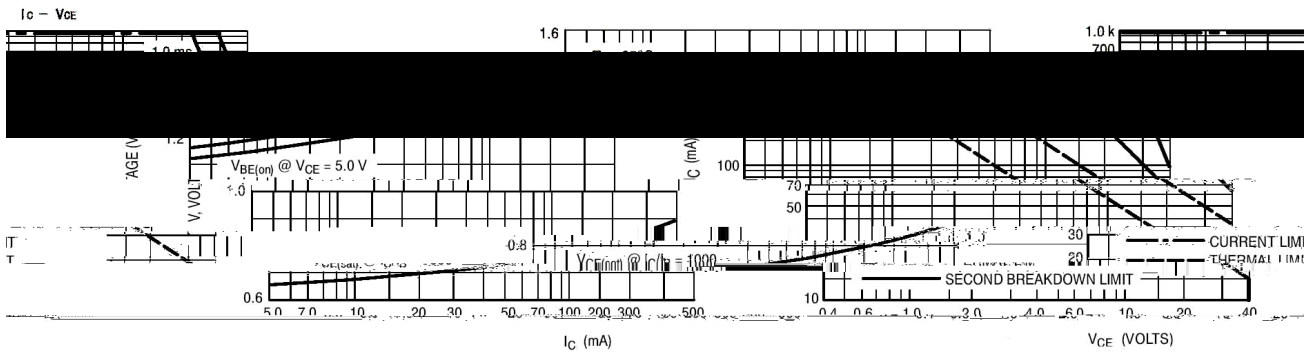
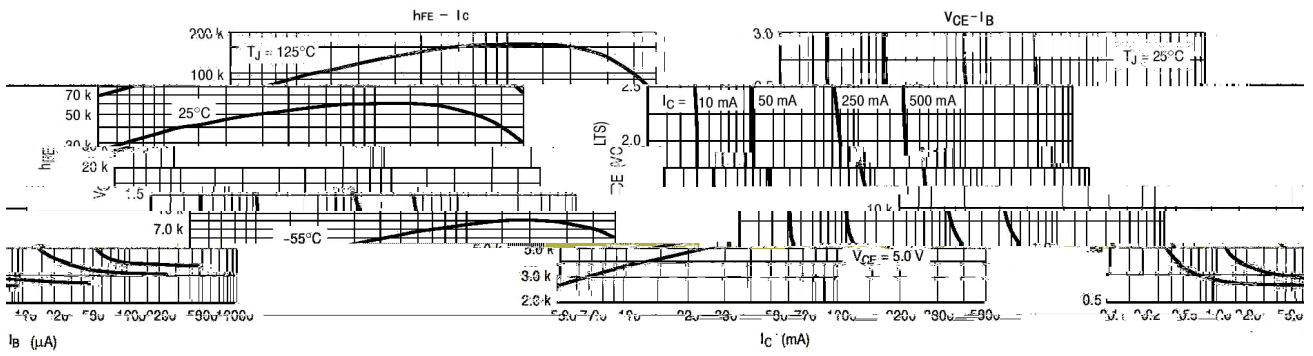
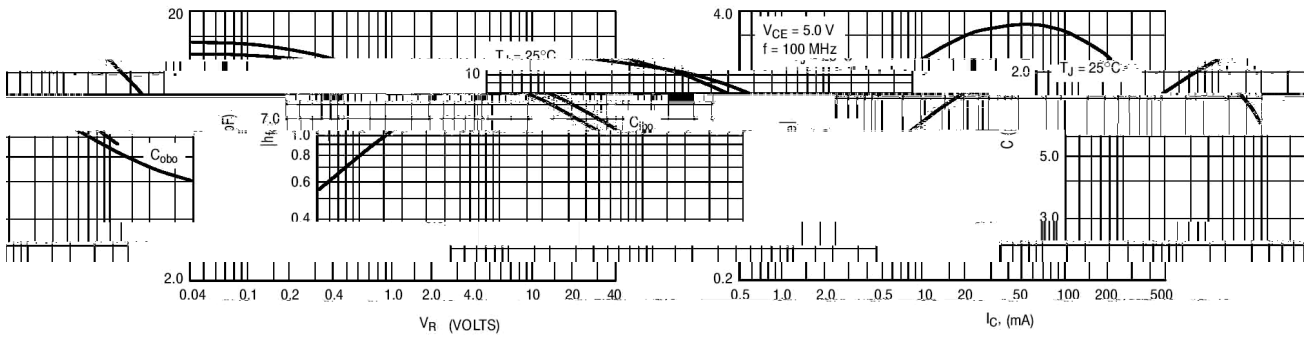
/ hFE Classifications & Marking

/ Absolute Maximum Ratings(Ta=25)

/ Electrical Characteristics(Ta=25)

		μ				
						μ
						μ

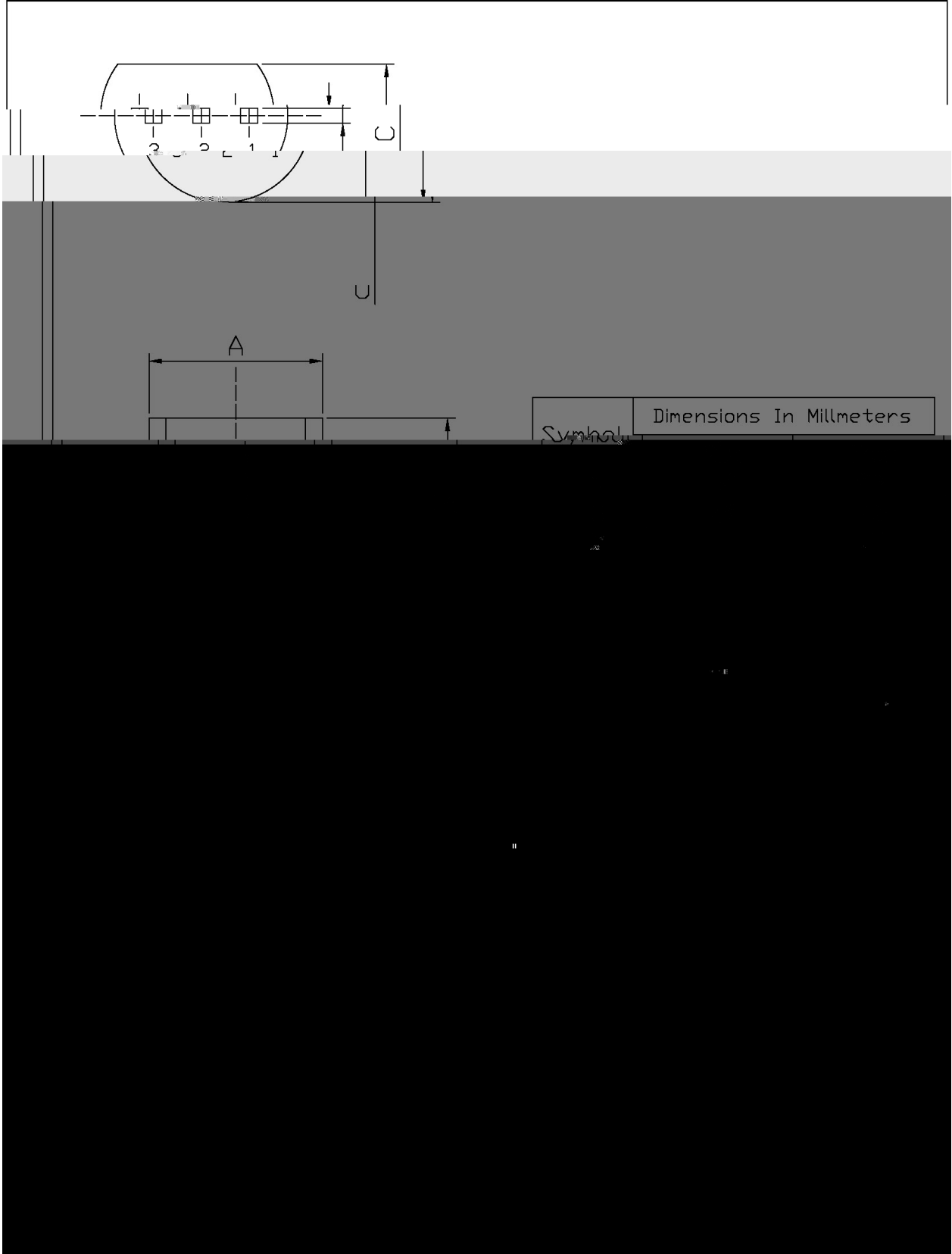
/ Electrical Characteristic Curve



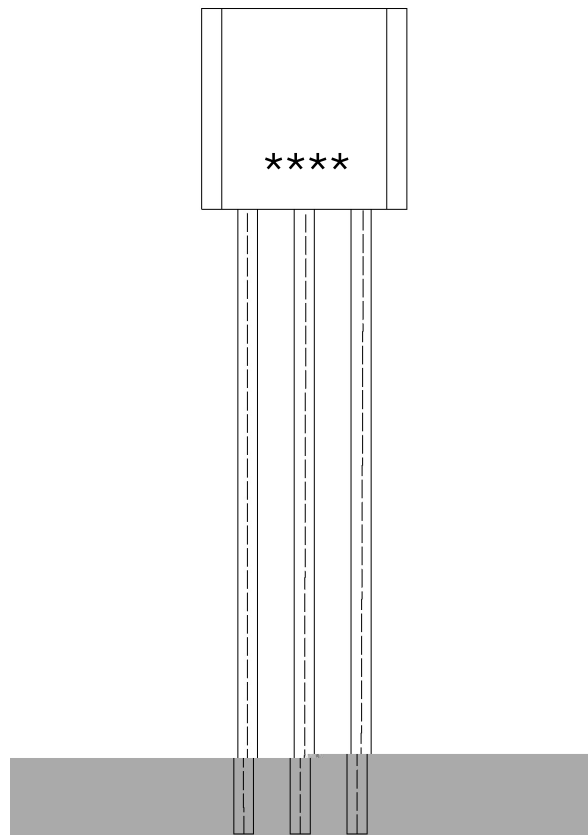
/ Package Dimensions

T0-92

Unit: mm



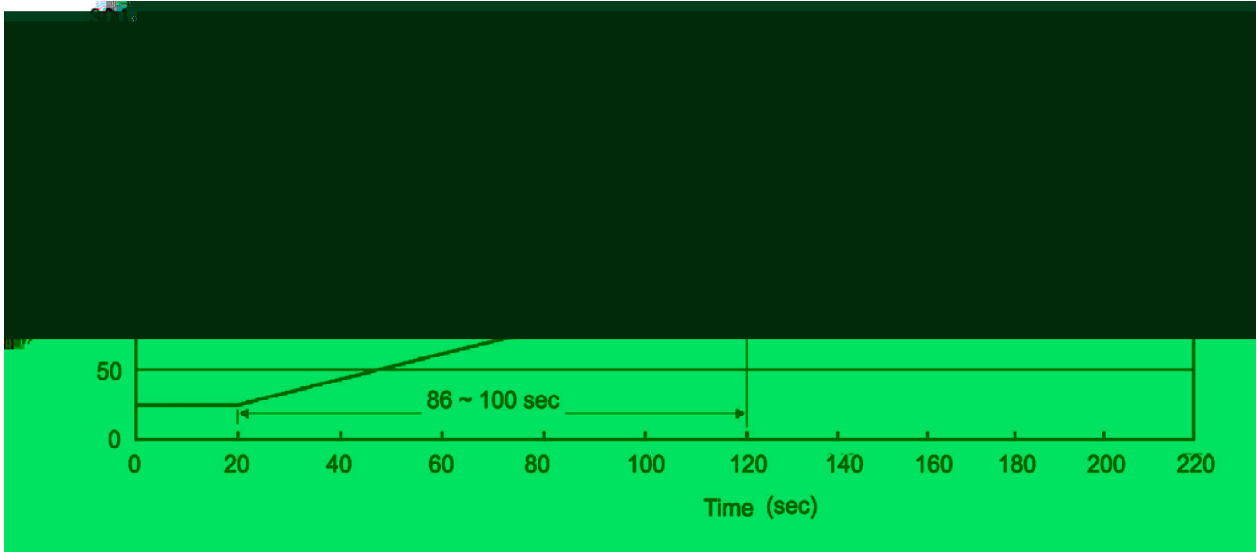
/ Marking Instructions



BR:

A13

() / Temperature Profile for Dip Soldering(Pb-Free)



± ± ± ±

/ Resistance to Soldering Heat Test Conditions

± ±

/ Packaging SPEC.

						Bag	Inner Box	Outer Box
	Units/Bag /	Bags/Inner Box /	Units/Inner Box /	Inner Boxes/Outer Box /	Units/Outer Box /			
TO-92	1,000	10	10,000	5	50,000	135×190	237×172×102	560×245×195
	1,000	10	10,000	10	100,000	135×190	237×172×102	560×245×375

Units/tape /	Tape/Inner Box /	Rows/Inner Box