

MUR1660CT

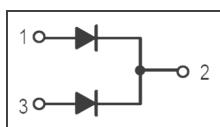
/ Descriptions

TO-220

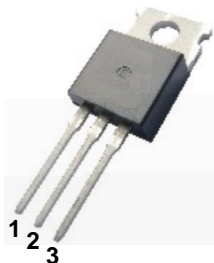
/ Features

/ Applications

/ Equivalent Circuit



/ Pinning



/ h_{FE} Classifications & Marking

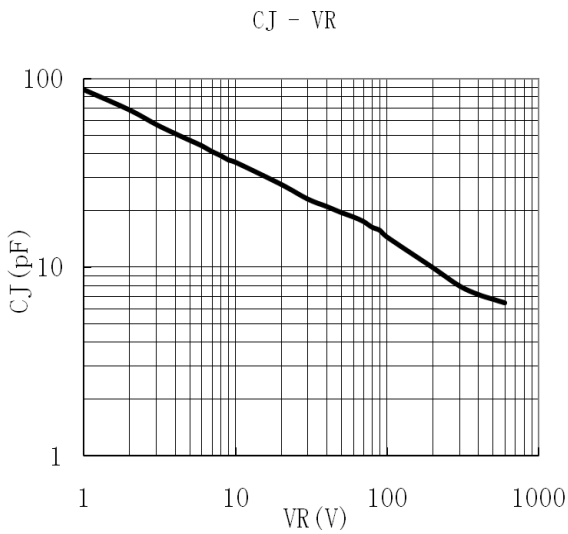
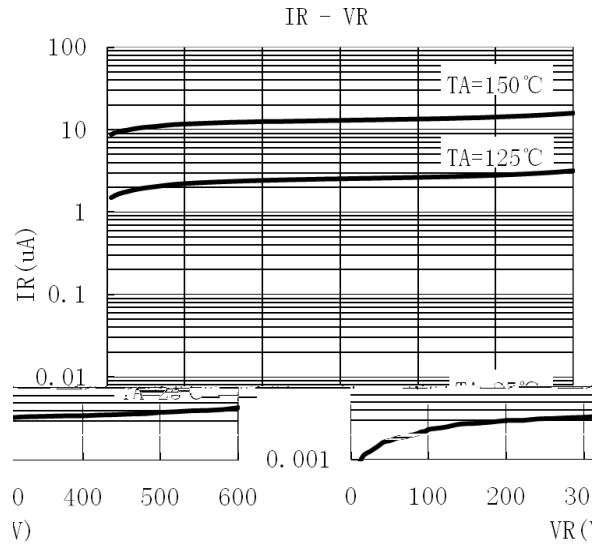
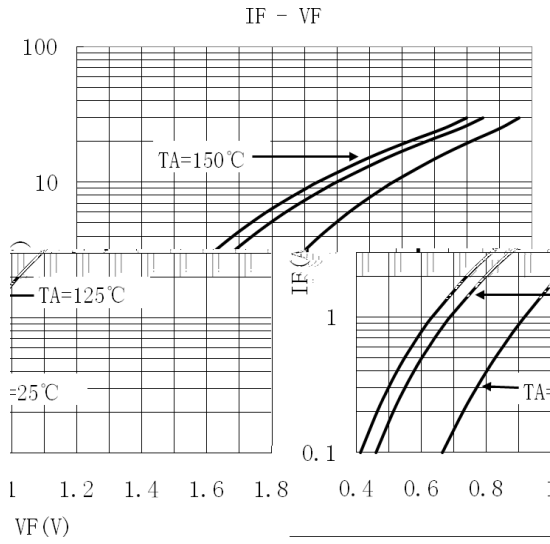
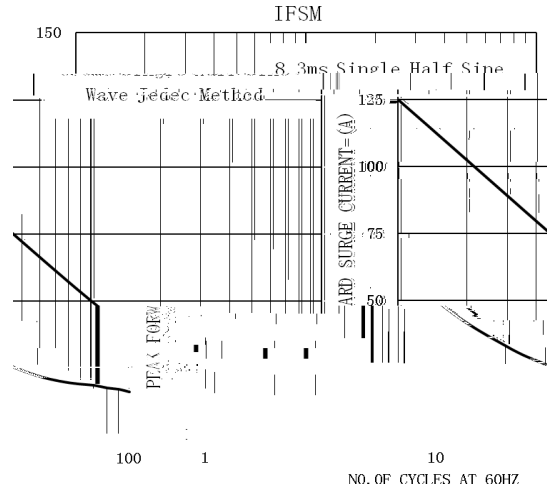
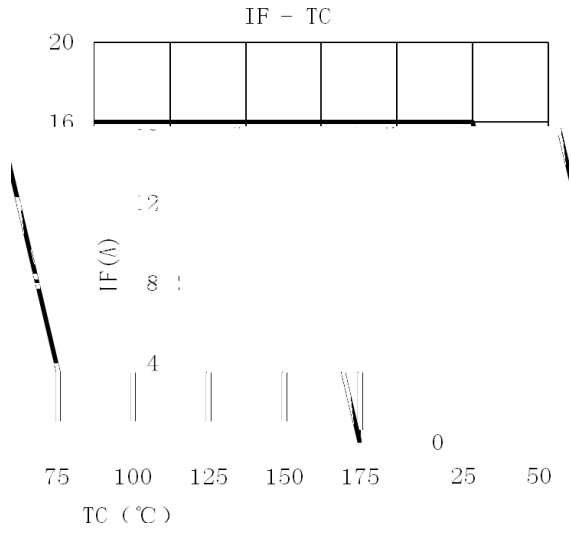
/ Absolute Maximum Ratings(Ta=25)

			°C
			°C

/ Electrical Characteristics(Ta=25)

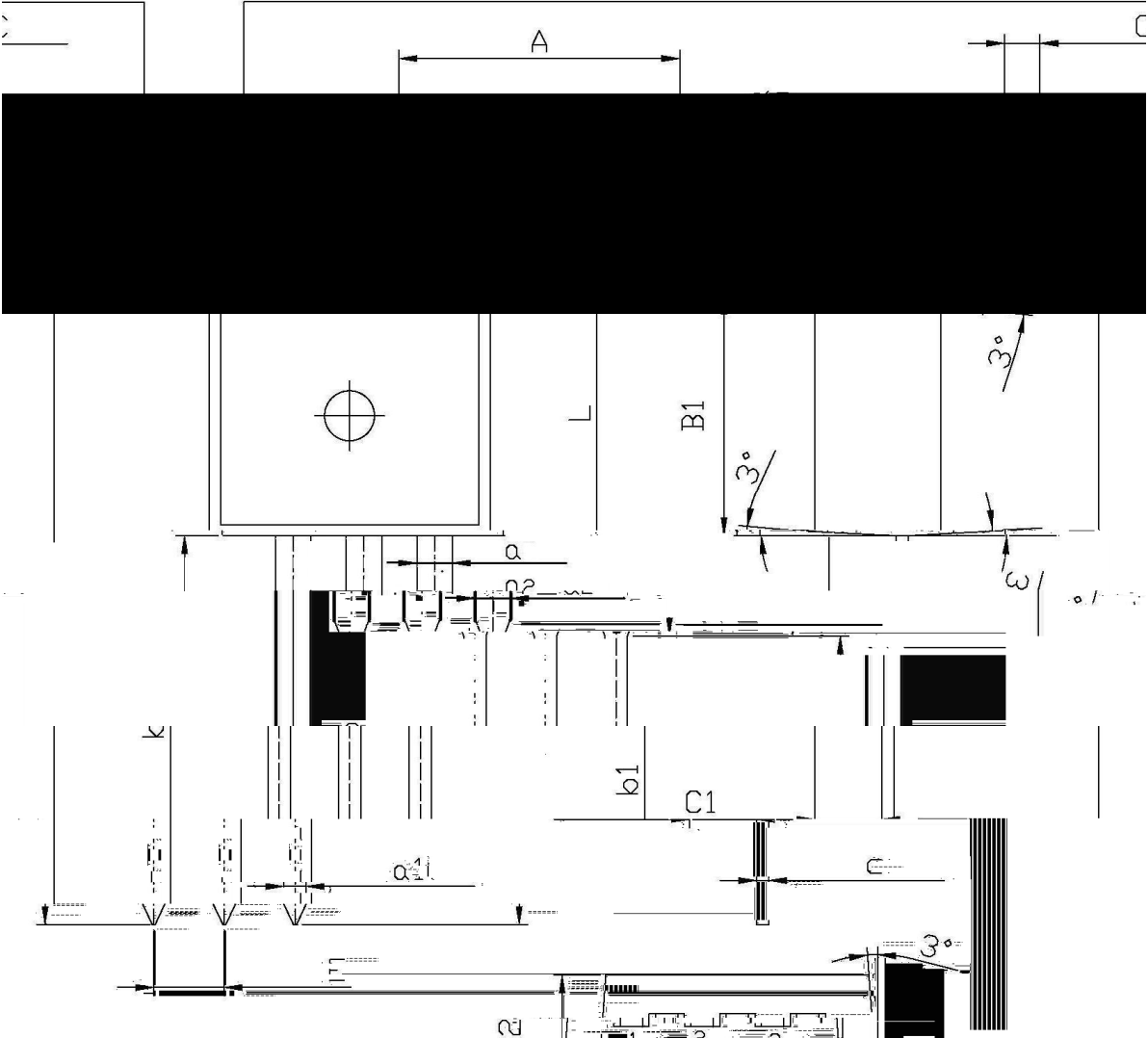
1.

/ Electrical Characteristic Curve



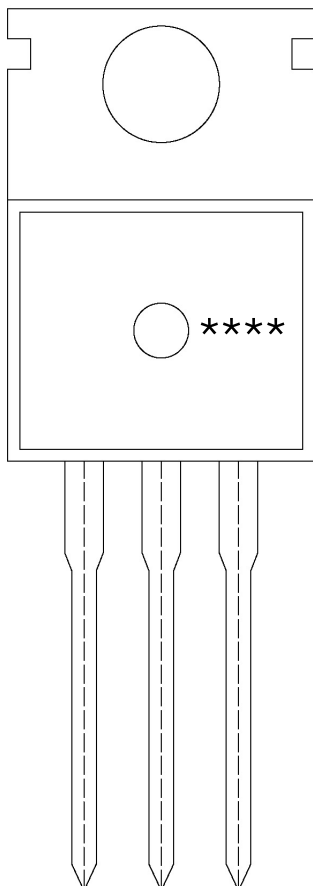
/ Package Dimensions

mm TO-220 单位:



Symbol	Dimensions in mils		Symbol	Dimensions in millimeters	
	Min	Max		Min	Max
A	9.8	10.2	C	1.2	1.4
R	3.56	3.64	B	6.3	6.7
	9.0	9.4	L	15.7	16.1
	1.22	1.32	b1	9.6	10.2
	1.25	1.45	a2		

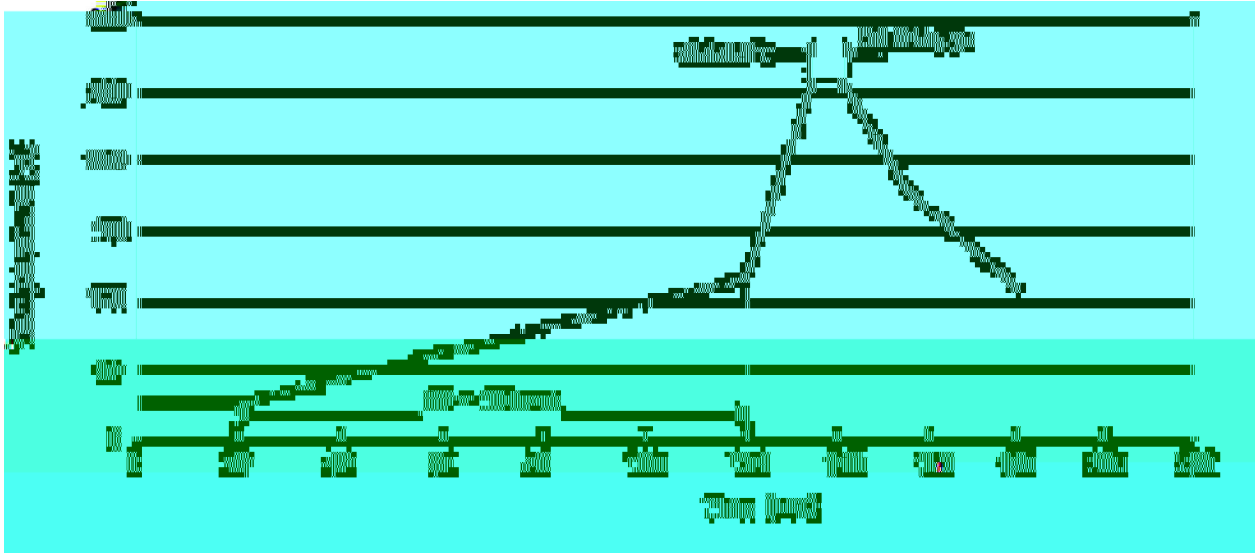
/ Marking Instructions



BR
MUR1660
CT:

:

() / Temperature Profile for Dip Soldering(Pb-Free)



± ± ± ±

/ Resistance to Soldering Heat Test Conditions

± ± °C

/ Packaging SPEC.

						Bag	Inner Box	Outer Box
	Units/Bag /	Bags/Inner Box /	Units/Inner Box /	Inner Boxes/Outer Box /	Units/Outer Box /			
TO-220/F	200	10	2,000	5	10,000	135×190	237×172×102	560×245×195

						Tube	Inner Box	Outer Box
	Units/Tube /	Tubes/Inner Box /	Units/Inner Box /	Inner Boxes/Outer Box /	Units/Outer Box /			
TO-220/F	50	20	1,000	5	5,000	532×31.4×5.5	555×164×50	575×290×180

/ Notices