

**/ Descriptions**

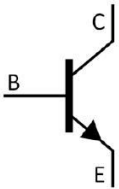
SOT-23          NPN                          Silicon NPN transistor in a SOT-23 Plastic Package.

**/ Features**

Low  $V_{CE(sat)}$ , high current. HF Product.

**/ A**

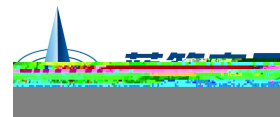
General purpose switching and muting, LCD back-lighting, supply line switching circuits.



PIN 1   Base          PIN 2   Emitter                  PIN 3   Collector

**é h<sub>FE</sub> Classifications & Marking**

|                       |         |
|-----------------------|---------|
| h <sub>FE</sub> Range | 220~450 |
| Marking               | HZG     |

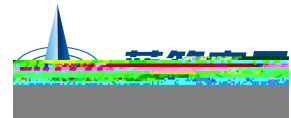


| Parameter                 | Symbol    | Rating | Unit |
|---------------------------|-----------|--------|------|
| Collector to Base Voltage | $V_{CBO}$ | 20     | V    |
| Collector to Emitter V R  |           |        |      |

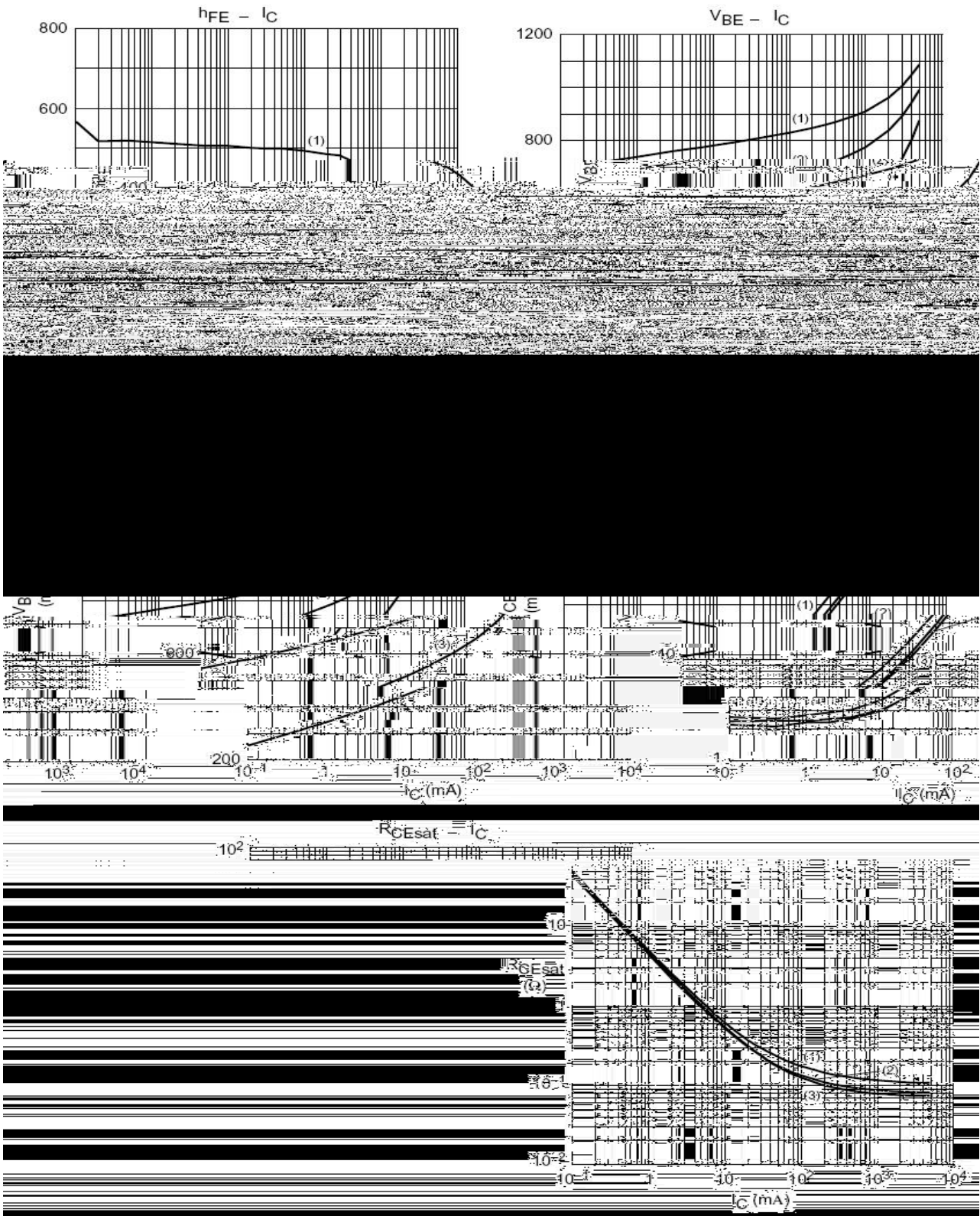
g

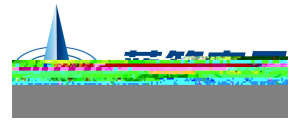
t)

v



/ Electrical Characteristic Curve

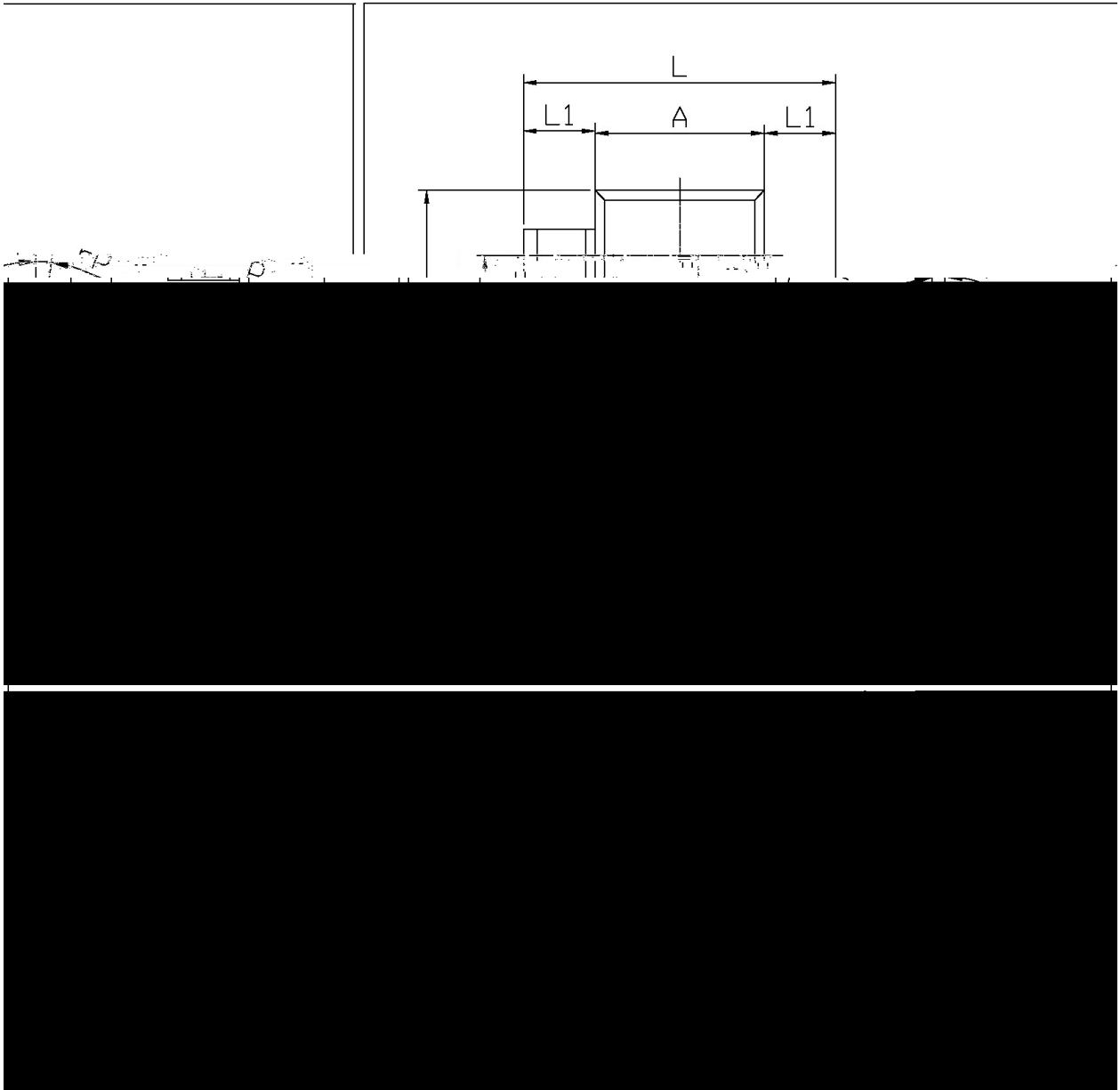


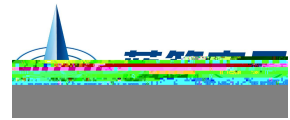


/ Package Dimensions

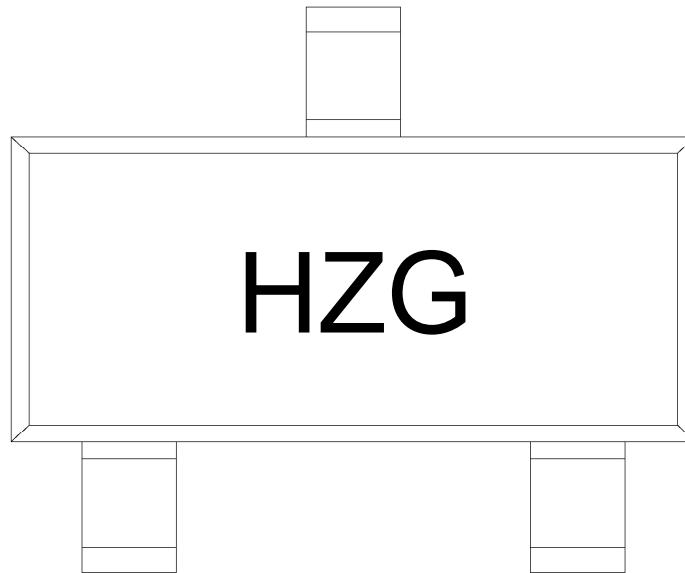
SPT-23

单位: mm





**/ Marking Instructions**



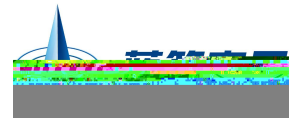
H

ZG

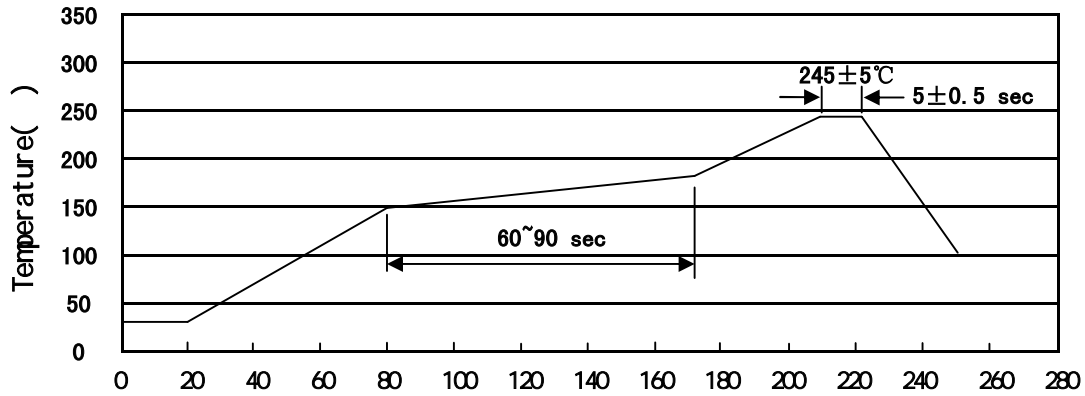
Note:

H      Company Code

ZG      Product Type



( ) / Temperature Profile for IR Reflow Soldering(Pb-Free)



Note:

- |   |       |     |    |           |  |
|---|-------|-----|----|-----------|--|
| 1 | 150   | 180 | 60 | 90sec;    | 1.Preheating:150~180°C, Time:60~90sec.   |
| 2 | 245±5 |     |    | 5±0.5sec; | 2.Peak Temp.:245±5°C, Duration:5±0.5sec. |
| 3 |       |     | 2  | 10°C/sec. | 3. Cooling Speed: 2~10°C/sec.            |

/ Resistance to Soldering Heat Test Conditions

260±5°C                      10±1 sec.                      Temp.:260±5°C                      Time:10±1 sec

/ Packaging SPEC.

/ REEL

| Package Type<br>封装形式 | Units 包装数量         |                         |                        |                              |                        | Dimension 包装尺寸 (unit: mm <sup>3</sup> ) |             |             |
|----------------------|--------------------|-------------------------|------------------------|------------------------------|------------------------|---|-------------|-------------|
|                      | Units/Reel<br>只/卷盘 | Reels/Inner Box<br>卷盘/盒 | Units/Inner Box<br>只/盒 | Inner Boxes/Outer Box<br>盒/箱 | Units/Outer Box<br>只/箱 | Reel                                    | Inner Box 盒 | Outer Box 箱 |
| SOT-23               | 3,000              | 10                      | 30,000                 | 6                            | 180,000                | 7" ×8                                   | 180×120×180 | 390×385×205 |

/ Notices