

Rev.F May.-2019

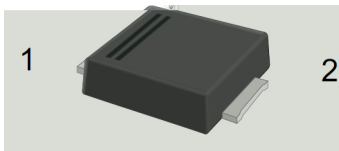
50V ~ 1000V 2.0A SMBF

Surface Mount General Purpose Silicon Rectifiers, Reverse Voltage: 50 to 1000V, Forward Current: 2.0A, SMBF thin package.

RoHS 2011/65/EU

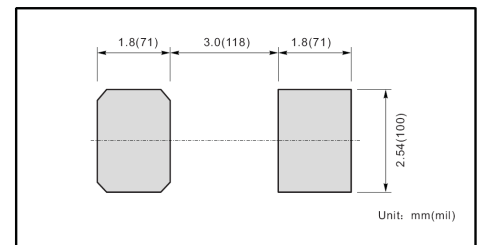
Glass Passivated Chip Junction, Fast reverse recovery time, Lead free in comply with EU RoHS 2011/65/EU directives, For surface mounted applications. Halogen free product.

General purpose.



PIN	DESCRIPTION
1	Cathode
2	Anode

The recommended mounting pad size



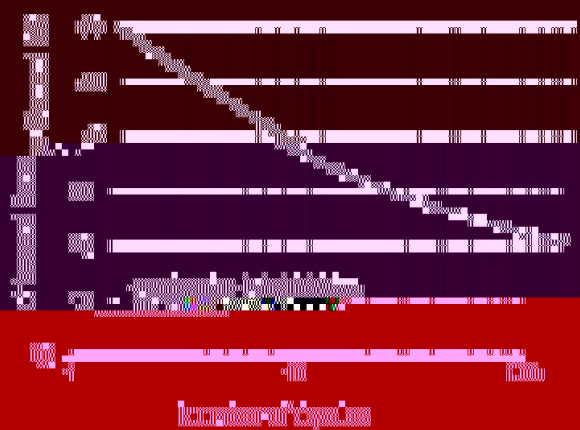
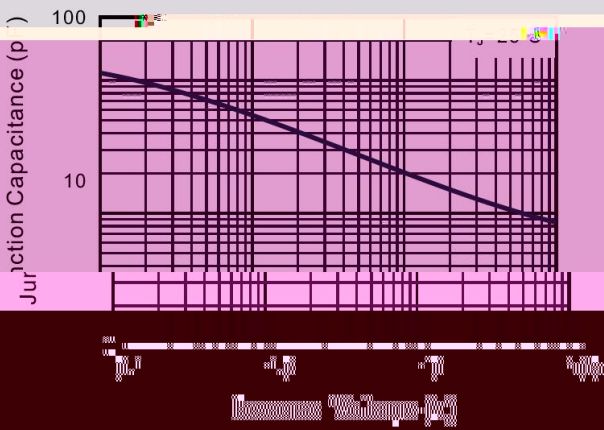
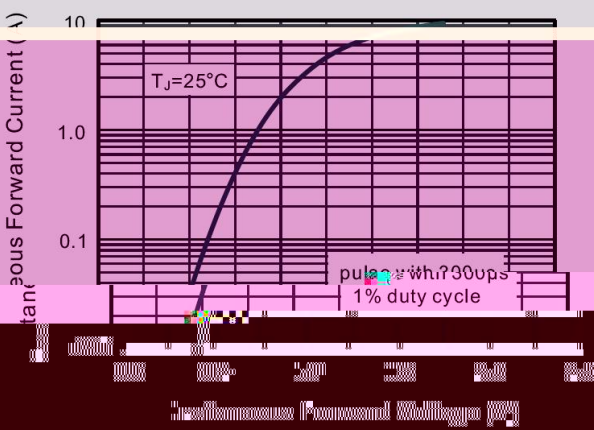
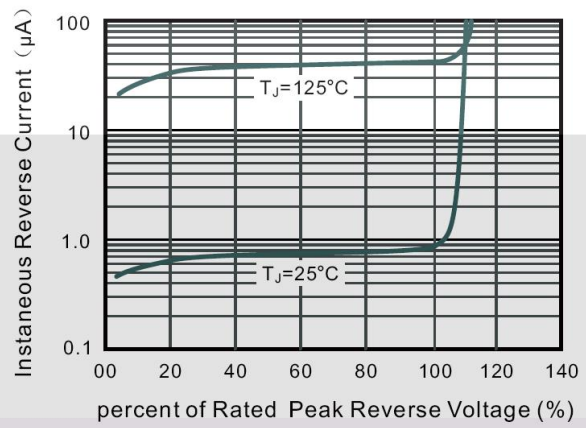
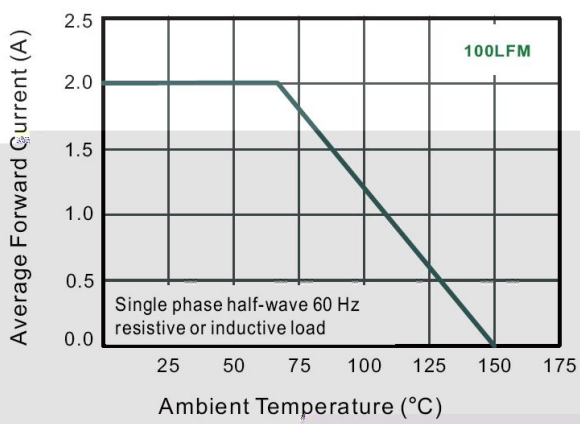
See Marking Instructions.

Parameter	Symbol	Rating							Unit
		S2ABF	S2BBF	S2DBF	S2GBF	S2JBF	S2KBF	S2MBF	
Maximum Repetitive Peak Reverse Voltage	V_{RRM}	50	100	200	400	600	800	1000	V
Maximum RMS voltage	V_{RMS}	35	70	140	280	420	560	700	V
Maximum DC Blocking Voltage	V_{DC}	50	100	200	400	600	800	1000	V
Maximum Average Forward Rectified Current at $T_a=65^\circ\text{C}$	$I_{F(AV)}$	2.0							A
Peak Forward Surge Current 8.3 ms Single Half Sine Wave Superimposed on Rated Load (JEDEC Method)	I_{FSM}	60							A
Typical Junction Capacitance ¹⁾	C_j	30							pF
Typical Thermal Resistance ²⁾	R_{JA}	55							$^\circ\text{C}/\text{W}$
Operating and Storage Temperature Range	T_j, T_{stg}	-55~+150							$^\circ\text{C}$

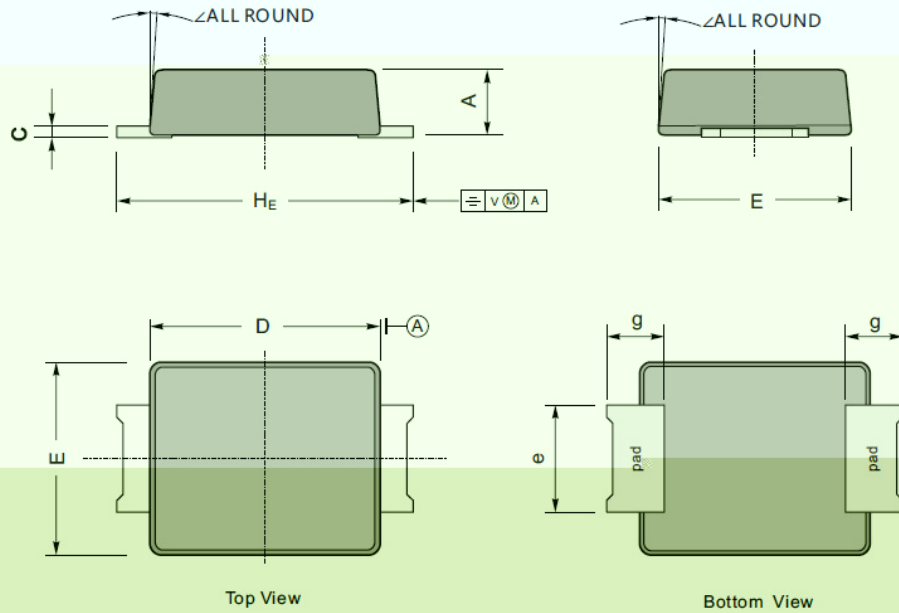
Note:

- 1 Measured at 1MHz and applied reverse voltage of 4V D.C
- 2 P.C.B. mounted with 0.5 X 0.5" (12.7 X 12.7 mm) copper pad areas.

Parameter	Symbol	Test Conditions	数值 Rating	Unit
Maximum Forward Voltage	V_F	$I_F=2.0\text{A}$	1.1	V
Maximum DC Reverse Current at Rated DC Blocking Voltage	I_R	$T_a=25^\circ\text{C}$	5.0	μA
		$T_a=125^\circ\text{C}$	100	μA



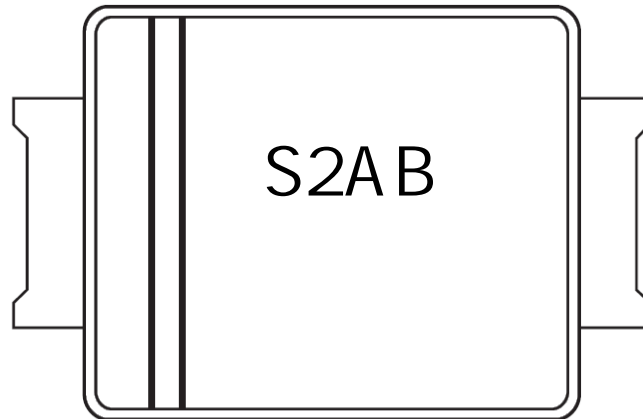
°MDF



UNIT		A	C	D	E	H_E	e	g	\angle
mm	max	1.3	0.26	4.4	3.7	5.5	2.2	1.0	9°
	min	1.1	0.18	4.2	3.5	5.1	1.9		
mil	max	51	10	173	146	216	86		
	min	43	7	165	138	200	75		

Marking

Type number	Marking code
S2ABF***	S2AB
S2BBF***	S2BB
S2DBF***	S2DB
S2GBF***	S2GB
S2JBF***	S2JB
S2KBF***	S2KB
S2MBF***	S2MB



S2AB

1 *

3 *

Note:

S2AB Product Type Code

Lot No. Code The 1st * means:YM Code The last 3 * means:little Lot No
Code



1	150 180	60 90sec;
2	245±5	5±0.5sec;
3		

Note:

1.Preheating:150~180 , Time:60~90sec.
2.Peak Temp.:245±5 , Duration:5±0.5sec.