

/ Descriptions

20~ 200V 2.0A SMBF

Surface Mount Schottky Barrier Rectifier, Reverse Voltage:20 to 200 V, Forward Current:2.0A, SMBF package.

/ Features

Low power loss, high efficiency, High forward surge current capability, For use in low voltage, high frequency inverters, and polarity protection applications, For surface mounted applications. Halogen free product.

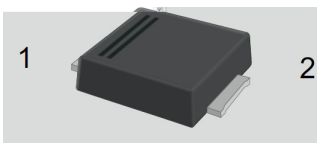
/ Applications

General purpose.

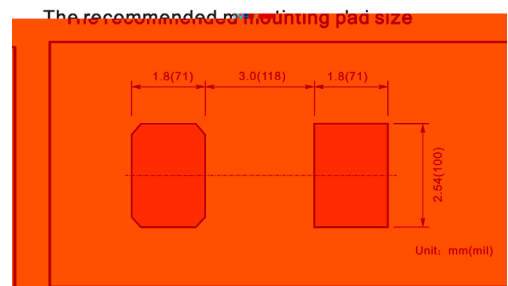
/ Equivalent Circuit



/ Pinning



PIN	DESCRIPTION
1	Cathode
2	Anode



/ Marking

See Marking Instructions.

/ Absolute Maximum Ratings(Ta=25)

Parameter	Symbol	Rating								Unit
		SS22BF	SS24BF	SS26BF	SS28BF	SS210BF	SS212BF	SS215BF	SS220BF	
Maximum Repetitive Peak Reverse Voltage	V_{RRM}	20	40	60	80	100	120	150	200	V
Maximum RMS voltage	V_{RMS}	14	28	42	56	70	84	105	140	V
Maximum DC Blocking Voltage	V_{DC}	20	40	60	80	100	120	150	200	V
Maximum Average Forward Rectified Current	$I_{F AV}$	2.0								A
Peak Forward Surge Current,8.3ms Single Half Sine-wave Superimposed on Rated Load (JEDEC method)	I_{FSM}	50								A
Typical Junction Capacitance ¹⁾	C_j	220			110					pF
Typical Thermal Resistance ²⁾	$R_{\theta JA}$	75								/W
Operating Junction Temperature Range	T_j	-55~+125								
Storage Temperature Range	T_{stg}	-55~+150								

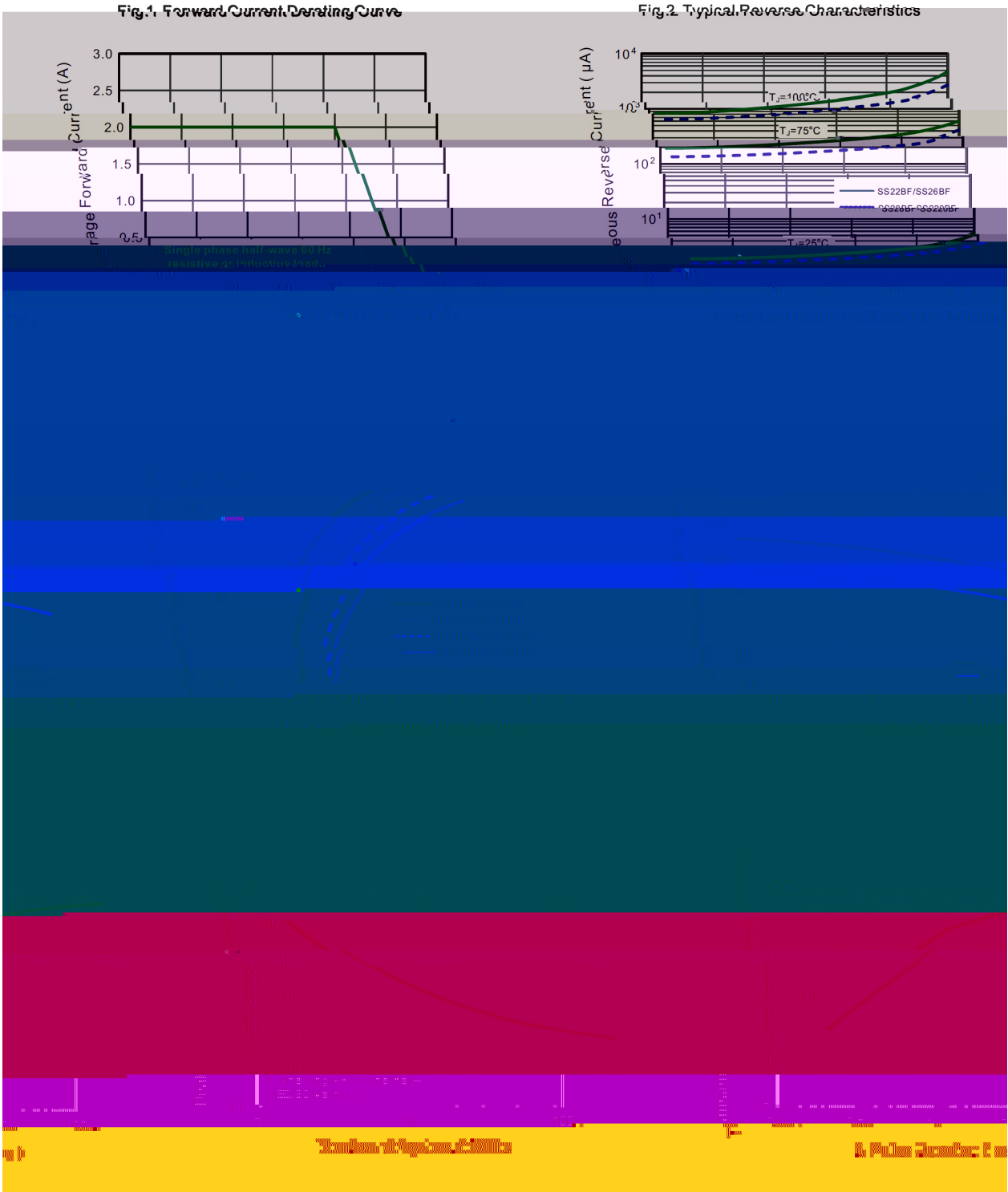
Note:

- 1 Measured at 1MHz and applied reverse voltage of 4 V D.C.
- 2 P.C.B. mounted with 2.0 X 2.0" (5 X 5 cm) copper pad areas.

/ Electrical Characteristics(Ta=25)

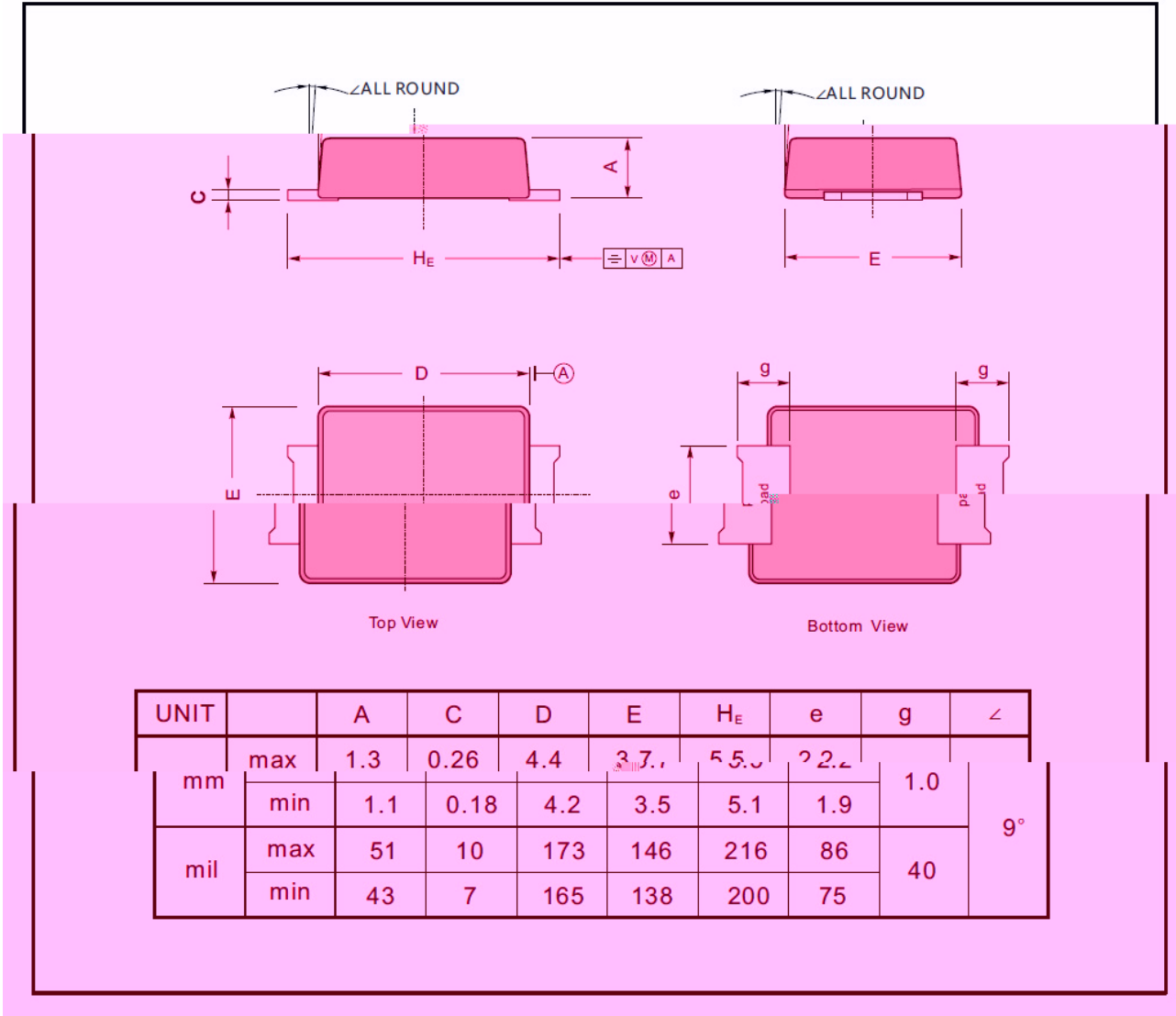
Parameter	Symbol	Test Conditions	Rating							Unit	
			SS22BF	SS24BF	SS26BF	SS28BF	SS210BF	SS212BF	SS215BF		SS220BF
Max Instantaneous Forward Voltage	V_F	$I_F=2.0A$	0.55		0.70		0.85		0.95		V
Maximum DC Reverse Current at Rated DC Reverse Voltage	I_R	$T_a=25$	0.5			0.3					mA
		$T_a=100$	5.0			3					

/ Electrical Characteristic Curve



/ Package Dimensions

SMBF

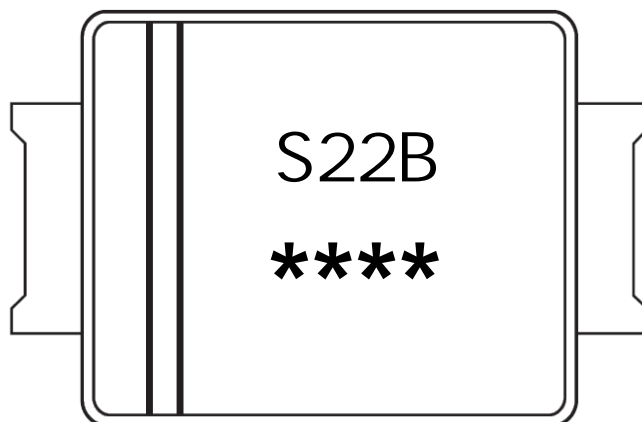


/ Marking Instructions

Marking

Type number	Marking code
SS22BF	S22B
SS24BF	S24B
SS26BF	S26B
SS28BF	S28B
SS210BF	S210B
SS212BF	S212B
SS215BF	S215B
SS220BF	S220B

/ Marking Instructions



S22B

1

3

Note:

S22B Product Type Code

**** Lot No. Code The 1st means:YM Code The last 3 means:little Lot No Code

() /

				Note:
1	150 180	60 90sec;		1.Preheating:150~180 , Time:60~90sec.
2	245±5	5±0.5sec;		2.Peak Temp.:245±5 , Duration:5±0.5sec.
3		2 10 /sec.		3. Cooling Speed: 2~10 /sec.

/ Resistance to Soldering Heat Test Conditions

260±5 10±1 sec. Temp.:260±5 Time:10±1 sec

/ Packaging SPEC.

/ REEL

Package Type 封装形式	Units 包装数量	Dimension 包装尺寸 (unit: mm ³)
----------------------	------------	---