



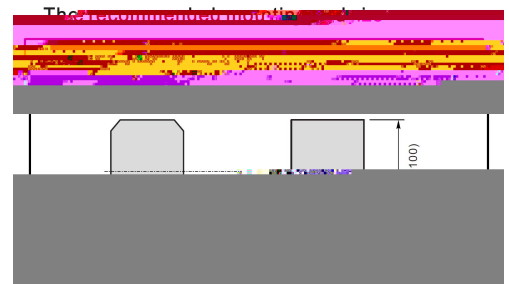


SMBF

Surface Mount Schottky Barrier Rectifier, Reverse Voltage:100V,Forward Current:2.0A,SMBF thin package.

Low power loss, high efficiency, High forward surge current capability, For use in low voltage, high frequency inverters, and polarity protection applications,For surface mounted applications.Halogen free product.

General purpose.



See Marking Instructions.



参数 Parameter	参数符号 Symbol	数值 Rating	单位 Unit
Maximum Repetitive Peak Reverse Voltage	$V_{RRM}$	100	V
Maximum RMS voltage	$V_{RMS}$	70	V
Maximum DC Blocking Voltage	$V_{DC}$	100	V
Maximum Average Forward Rectified Current	$I_{F(AV)}$	2.0	A
Peak Forward Surge Current,8.3ms Single Half Sine-wave Superimposed on Rated Load (JEDEC method)	$I_{FSM}$	50	A
Typical Junction Capacitance <sup>1)</sup>	$C_j$	110	pF
Typical Thermal Resistance <sup>2)</sup>	$R_{JA}$	75	°C/W
Operating Junction Temperature Range	$T_j$	-55~+150	°C
Storage Temperature Range	$T_{stg}$	-55~+150	°C

Note:

- 1 ) Measured at 1MHz and applied reverse voltage of 4 V D.C.
- 2 ) P.C.B. mounted with 2.0 X2.0" (5 X 5 cm) copper pad areas.

参数 Parameter	参数符号 Symbol	测试条件 Test condition	数值 Rating	单位 Unit
Max Instantaneous Forward Voltage	$V_F$	$I_F=2.0A$	0.6	V
Maximum DC Reverse Current at Rated DC Reverse Voltage	$I_R$	$T_a=25^{\circ}C$ $T_a=100^{\circ}C$	0.3 3	mA

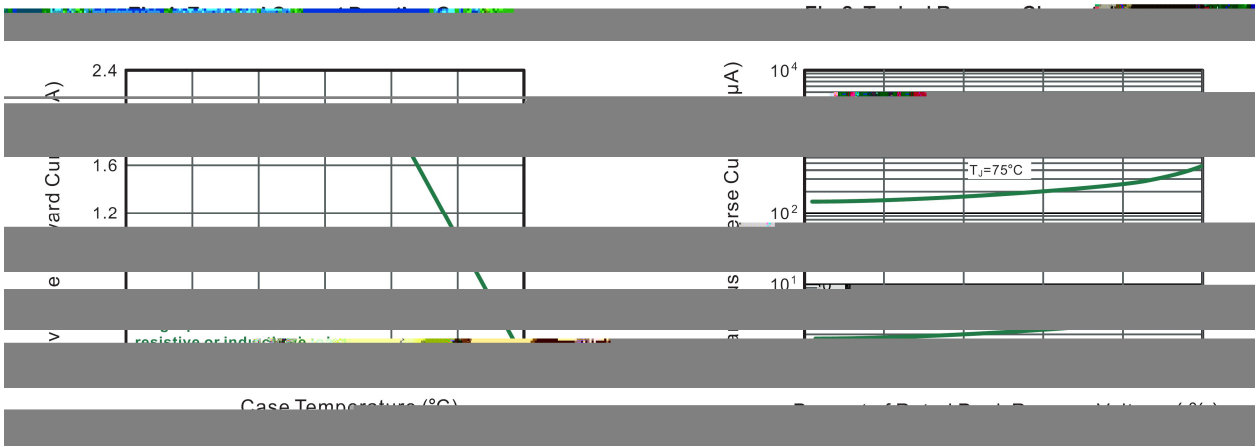


Fig.3 Typical Forward Characteristic

Fig.4 Typical Junction Capacitance

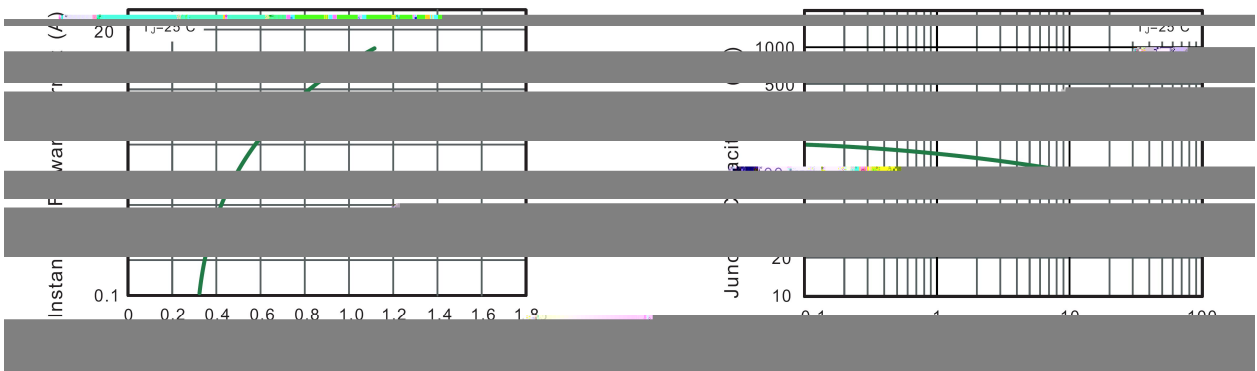
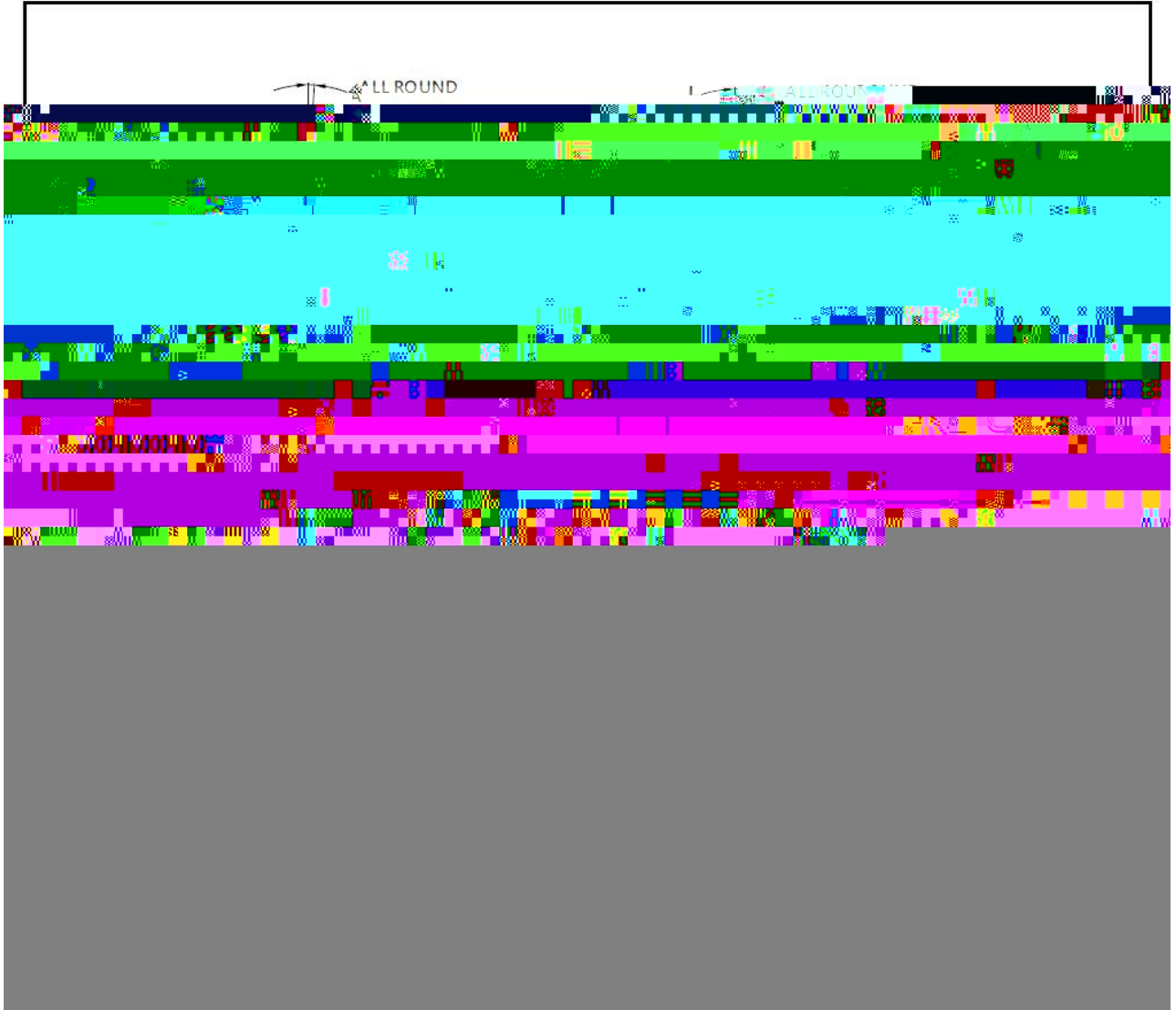


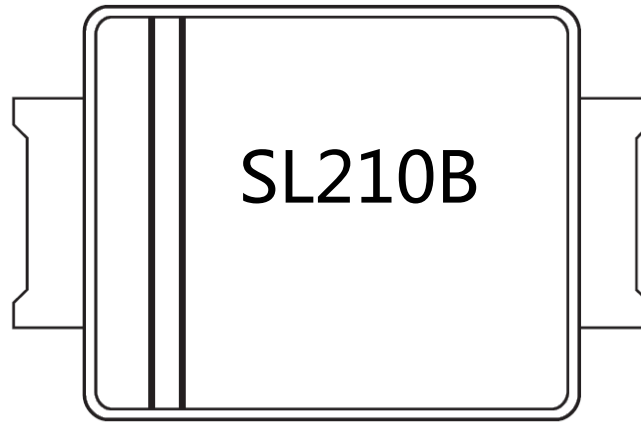
Fig.5 Maximum Non-Repetitive Peak

Fig.6- Typical Transient Thermal Impedance



SMBF





说明：

SL210B： 为型号代码

\*\*\*\*： 为生产批号追溯码，第1个\*为 代码，后面3个\*为当 小批号代码

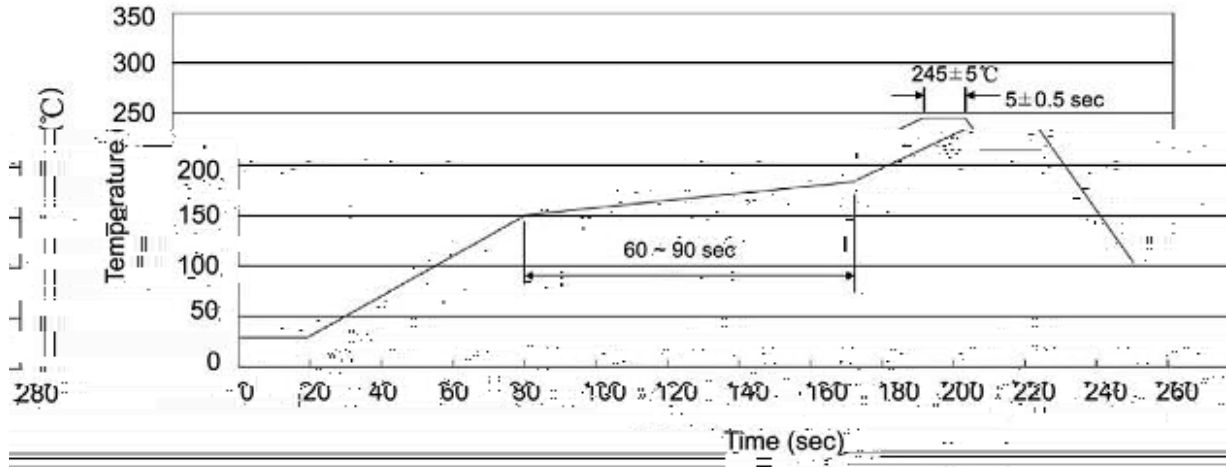
Note:

SL210B： Product Type Code

\*\*\*\*： Lot No. Code , The 1st \* means:YM Code , The last 3 \* means:little Lot No Code



Temperature Profile for IR Reflow Soldering(Pb-Free)



Note:

- 1            150 180            60 90sec;            1.Preheating:150~180 , Time:60~90sec.
- 2            245±5                    5±0.5sec;            2.Peak Temp.:245±5 , Duration:5±0.5sec.
- 3                            2 10 /sec.            3. Cooling Speed: 2~10 /sec.

260±5                    10±1 sec.                    Temp.:260±5                    Time:10±1 sec

/ REEL

Package Type 封装形式	Units 包装数量					Dimension 包装尺寸 (unit: mm <sup>3</sup> )		
	Units/Reel 只/卷盘	Reels/Inner Box 卷盘/盒	Units/Inner Box 只/盒	Inner Boxes/Outer Box 盒/箱	Units/Outer Box 只/箱	Reel	Inner Box 盒	Outer Box 箱
SMBF	5000	2	10000	5	50000	13" x12	336X332X40	380X335X366