

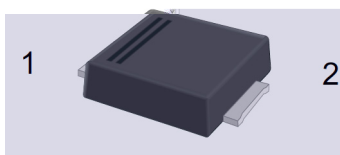
Rev.B May.-2019

40V 3.0A SMBF

Surface Mount Schottky Barrier Rectifier, Reverse Voltage:40V,Forward Current:3.0A,SMBF thin package.

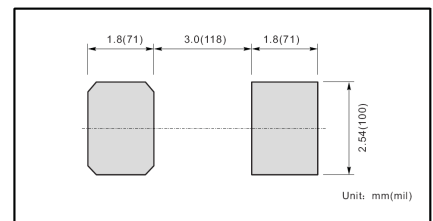
Low power loss, high efficiency, High forward surge current capability, For use in low voltage, high frequency inverters, and polarity protection applications,For surface mounted applications.Halogen free product.

General purpose.



PIN	DESCRIPTION
1	Cathode
2	Anode

The recommended mounting pad size



See Marking Instructions.

Absolute Maximum Ratings(Ta=25 ;)

@ f Parameter	@ f ... Z Symbol	f › Rating	% y Unit
Maximum Repetitive Peak Reverse Voltage	V _{RRM}	40	V
Maximum RMS voltage	V _{RMS}	28	V
Maximum DC Blocking Voltage	V _{DC}	40	V
Maximum Average Forward Rectified Current at T _c =100	I _{F(AV)}	3.0	A
Peak Forward Surge Current,8.3ms Single Half Sine-wave Superimposed on Rated Load	I _{FSM}	80	A
Typical Junction Capacitance ¹	C _j	350	pF
Typical Thermal Resistance ²	R _{JA}	47	/W
Operating Junction Temperature Range	T _j	-55~+150	
Storage Temperature Range	T _{stg}	-55~+150	

Note:

1 Measured at 1MHz and applied reverse voltage of 4 V D.C.

2 P.C.B. mounted with 2.0 X 2.0" (5 X 5 cm) copper pad areas.

Electrical Characteristics(Ta=25 ;)

@ f Parameter	@ f ... Z Symbol	y ; Ú ^ Test condition	f › Rating	% y Unit
Max Instantaneous Forward Voltage	V _F	I _F =3.0A	0.45	V
Maximum DC Reverse Current at Rated DC Reverse Voltage	I _R	T _a =25	0.3	mA
		T _a =100	5	

Ô ? d • Ž ¢ / Electrical Characteristic Curve

Ø □ =) ϕ / Package Dimensions

, My f / Marking Instructions

, My f / Marking Instructions

9 2 (

^a ç y

SL34B y ° Z W A

**** y ÿ D Z A Ç A k † 1 * v ã W A k e µ 3 * ç ã 4 Z W A

Note:

SL34B y Product Type Code

**** y Lot No. Code k The 1st * means:YM Code k The last 3 * means:little Lot No Code

š WD t... • Ž ç (x /) / : K S V K X G Z [X K 6 X U L O R K L U X / 8 8 K L R U] 9 U R J K X O T M 6

^a ç y

- 1o• Ä ½ “ † 150 ½180 - k ž • 60 ½90sec;
- 2o• Q › “ † 245 r5 - k ž • 4 Ò 5 r0.5sec;
- 3o•D N ò i Ò 0 , † 2 ½10 - /sec.

Note:

- 1.Preheating:150~180 - , Time:60~90sec.
- 2.Peak Temp.:245 r5 - , Duration:5 r0.5sec.
- 3. Cooling Speed: 2~10 - /sec.

ÂD /Cã p - »] / Resistance to Soldering Heat Test Conditions

“ † y 260 r5 - ž • y 10 r1 sec. Temp.:260 r5 - Time:10 r1 sec

G P á / Packaging SPEC.

2 & x / REEL

Package Type ß m ù ´	Units g m ô h					Dimension g m d Ê (unit ! mm ³)		
	Units/Reel / í	Reels/Inner Box í /ç	Units/Inner Box /ç	Inner Boxes/Outer Box ç/±	Units/Outer Box /±	Reel	Inner Boxç	Outer Boxž
SMBF	5000	2	10000	5	50000	13 s x15	336X332X40	380X335X366

„ ð y f / Notices