

# SSL56B~SSL510B

Rev. A Feb.-2019

## / Descriptions

60V~100V

5.0A

SMB

Surface Mount Schottky Barrier Rectifiers, Reverse Voltage 60 to 100V, Forward Current: 5.0A, SMB package.

## / Features

Low power loss, High efficiency, High forward surge current capability, For surface mounted applications. HF product.

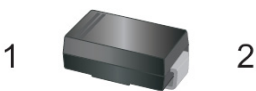
## / Applications

General purpose.

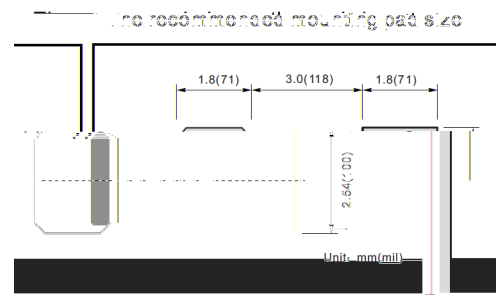
## / Equivalent Circuit



## / Pinning



PIN	DESCRIPTION
1	Cathode
2	Anode



## / Marking

See Marking Instructions.

## / Absolute Maximum Ratings(Ta=25 )

Parameter	Symbol	Rating		Unit
		SSL56B	SSL510B	
Maximum Repetitive Peak Reverse Voltage	$V_{RRM}$	60	100	V
Maximum RMS voltage	$V_{RMS}$	42	70	V
Maximum DC Blocking Voltage	$V_{DC}$	60	100	V
Maximum Average Forward Rectified Current	$I_{F(AV)}$	5.0		A
Peak Forward Surge Current 8.3 ms Single Half Sine Wave Superimposed on Rated Load (JEDEC Method)	$I_{FSM}$	150		A
Typical Junction Capacitance <sup>1</sup>	$C_j$	600		pF
Typical Thermal Resistance <sup>2</sup>	$R_{\theta JA}$	45		°C/W
Operating and Storage Temperature Range	$T_j, T_{stg}$	-55~+150		°C

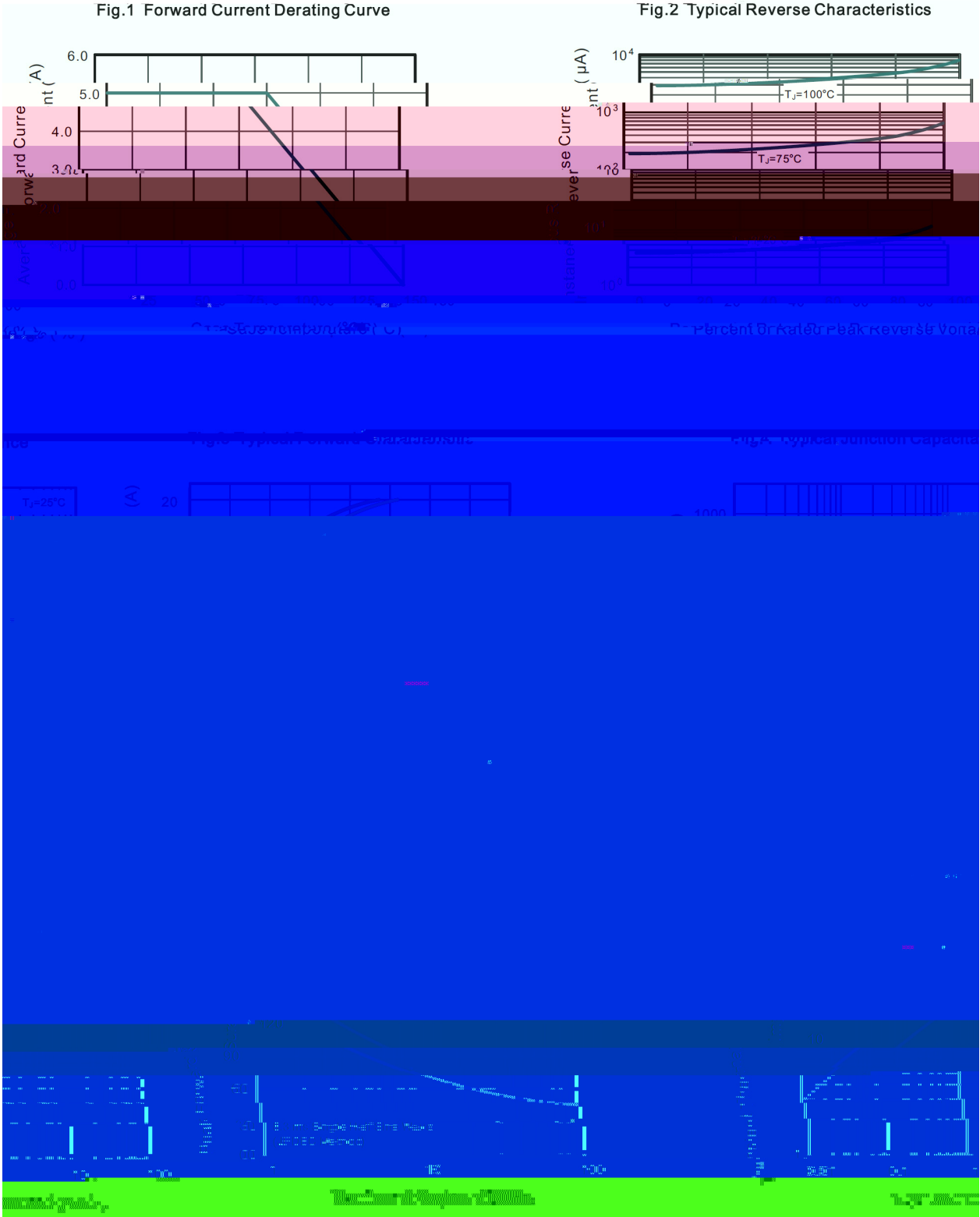
Note:

- 1 Measured at 1 MHz and applied reverse voltage of 4 V D.C
- 2 P.C.B. mounted with 2.0" X 2.0" (5 X 5 cm) copper pad areas.

## / Electrical Characteristics(Ta=25 )

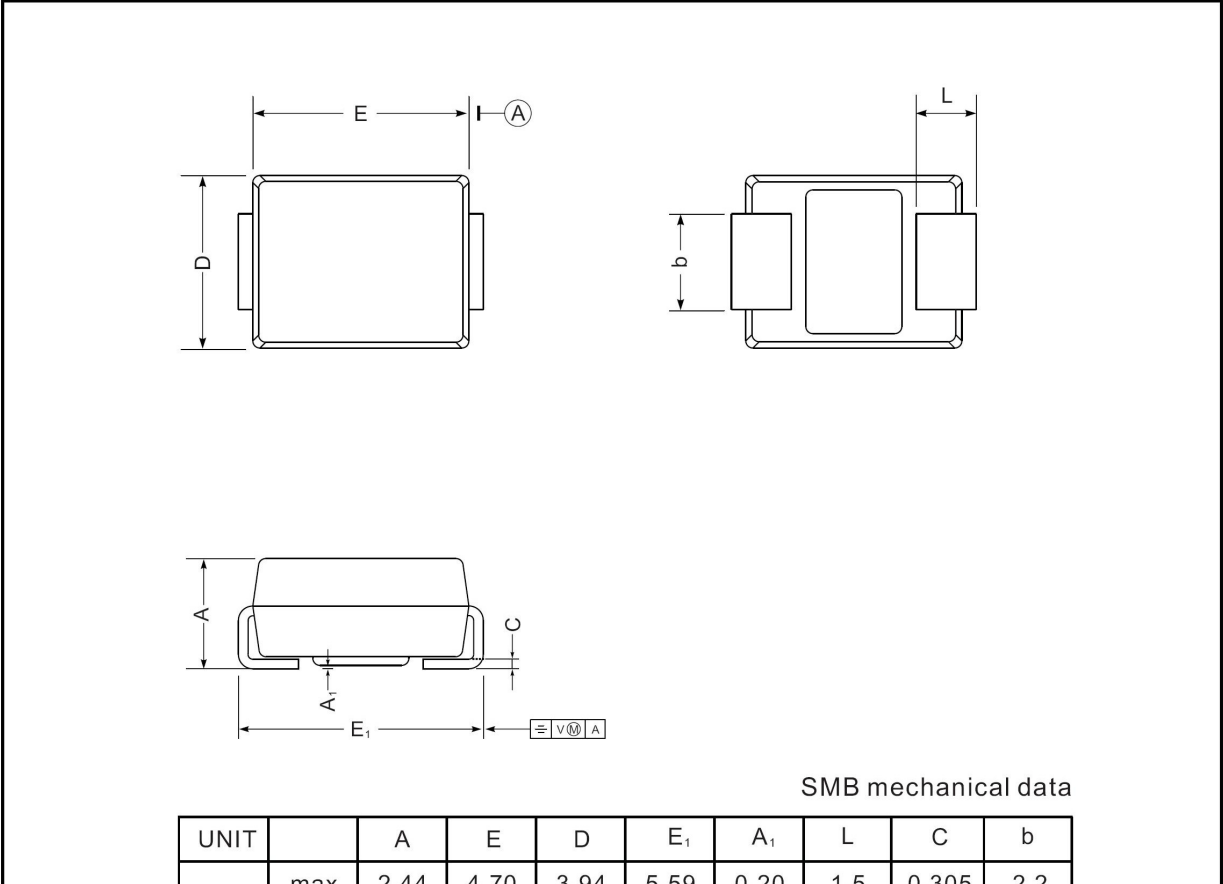
Parameter	Symbol	Test Conditions	数值 Rating		Unit
			SSL56B	SSL510B	
Maximum Instantaneous Forward Voltage	$V_F$	$I_F=5.0A$	0.5	0.6	V
Maximum DC Reverse Current at Rated DC Reverse Voltage	$I_R$	$T_a=25^\circ C$	1.0		mA
		$T_a=100^\circ C$	50		mA

/ Electrical Characteristic Curve



/ Package Dimensions

SMB



SMB mechanical data

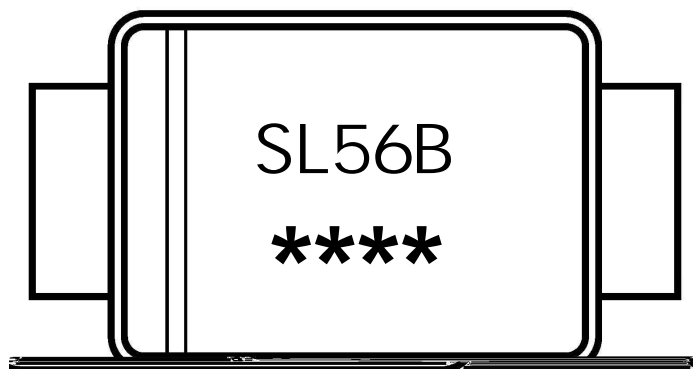
UNIT		A	E	D	E <sub>1</sub>	A <sub>1</sub>	L	C	b
mm	max	2.44	4.70	3.94	5.59	0.20	1.50	0.305	2.27
	min	2.13	4.06	3.3	5.08	0.05	0.8	0.152	1.9
mil	max	96	185	155	220	7.9	59	12	87
	min	84	160	130	200	2.0	32	6	75

/ Marking Instructions

# Marking

Type number	Marking code
SSL56B	SL56B
SSL510B	SL510B

/ Marking Instructions



SL56B

\*\*\*\*

1

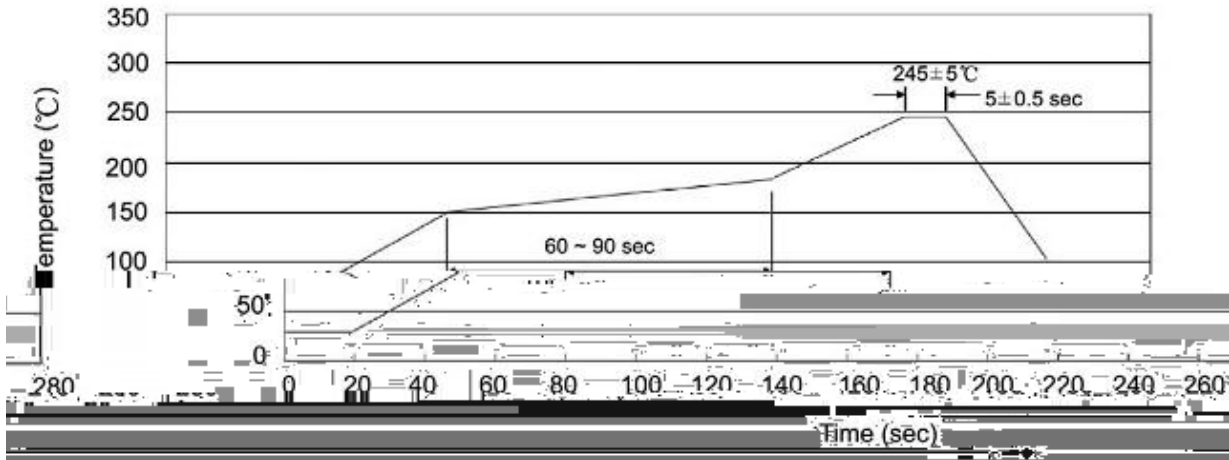
3

Note:

SL56B Product Type Code

\*\*\*\* Lot No. Code The 1st means:YM Code The last 3 means:little Lot No Code

( ) /



Note:

- |   |       |     |    |           |   |
|---|-------|-----|----|-----------|---|
| 1 | 150   | 180 | 60 | 90sec;    | 1.Preheating:150~180 , Time:60~90sec.   |
| 2 | 245±5 |     |    | 5±0.5sec; | 2.Peak Temp.:245±5 , Duration:5±0.5sec. |
| 3 |       |     | 2  | 10 /sec.  | 3. Cooling Speed: 2~10 /sec.            |

/ Resistance to Soldering Heat Test Conditions

260±5                      10±1 sec.                      Temp.:260±5                      Time:10±1 sec

/ Packaging SPEC.

/ REEL

Package Type 封装形式	Units 包装数量	Dimension 包装尺寸 (unit: mm <sup>3</sup> )
----------------------	------------	---