

## / Descriptions

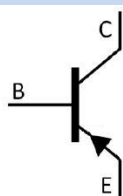
TO-220          PNP

## / Features

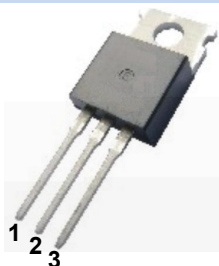
TIP31

## / Applications

## / Equivalent Circuit



## / Pinning

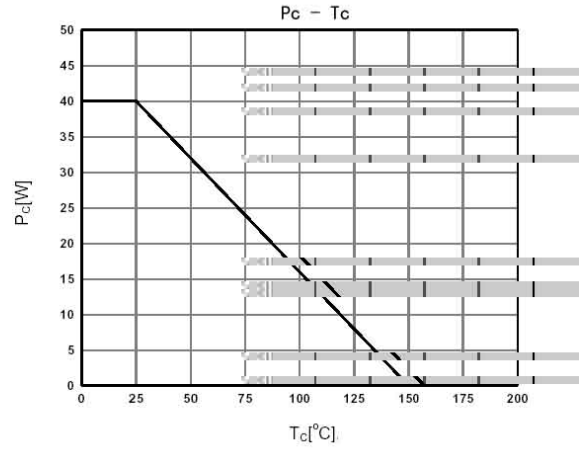
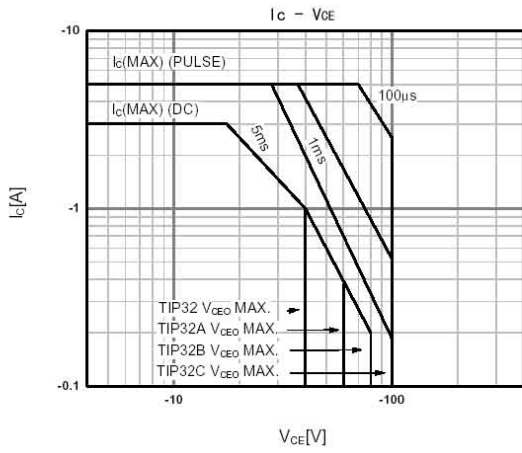
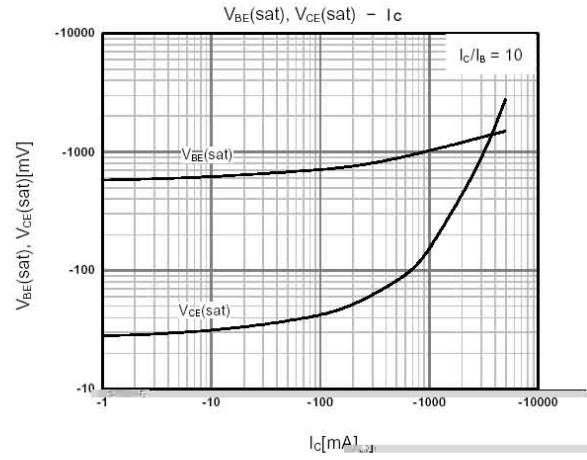
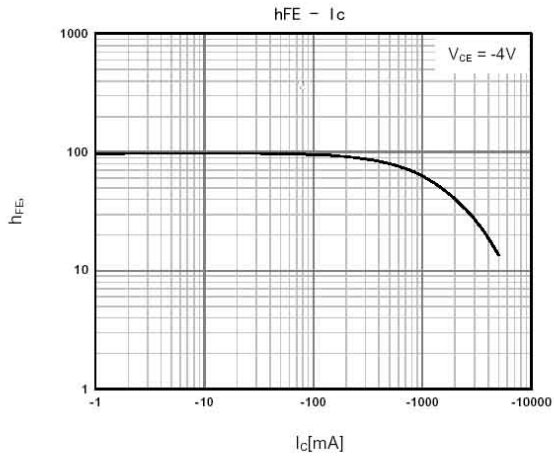


## / $h_{FE}$ Classifications & Marking

	°C					
						°C
		~				°C

---

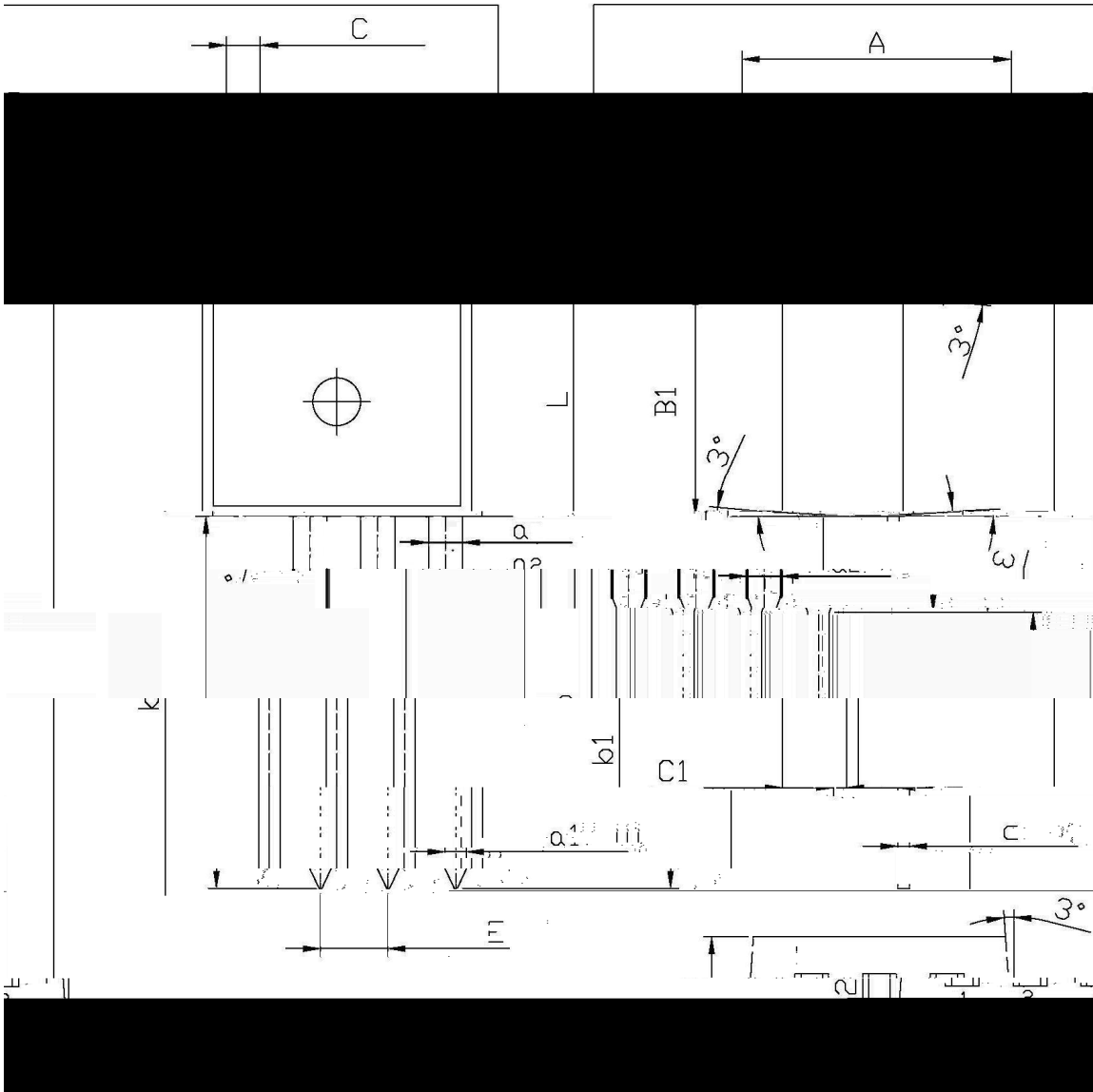
/ Electrical Characteristic Curve



/ Package Dimensions

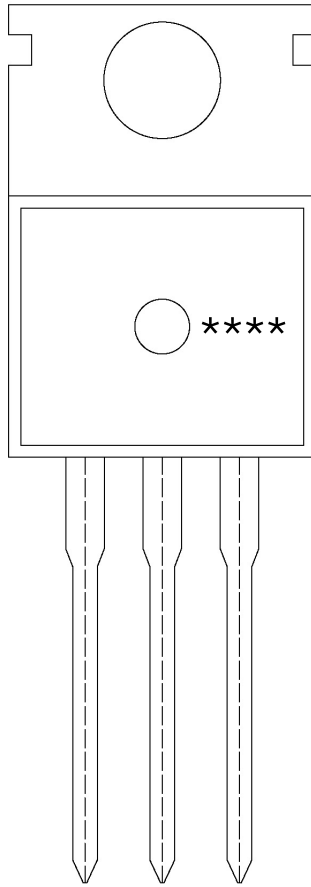
单位: mm

T0-220



Symbol	Dimensions in Millimeters		Symbol	Dimensions in Millimeters	
	Min	Max		Min	Max
A	9.8	10.2	C	1.2	1.4
R	3.56	3.64	B	6.3	6.7
L	9.0	9.4	L	15.7	16.1
C1	2.2	2.6	B1	12.6	13.6
a	0.4	0.6	a	1.22	1.32
b1	4.3	4.7	b1	2.34	2.74
			a1	1.25	1.45

/ Marking Instructions

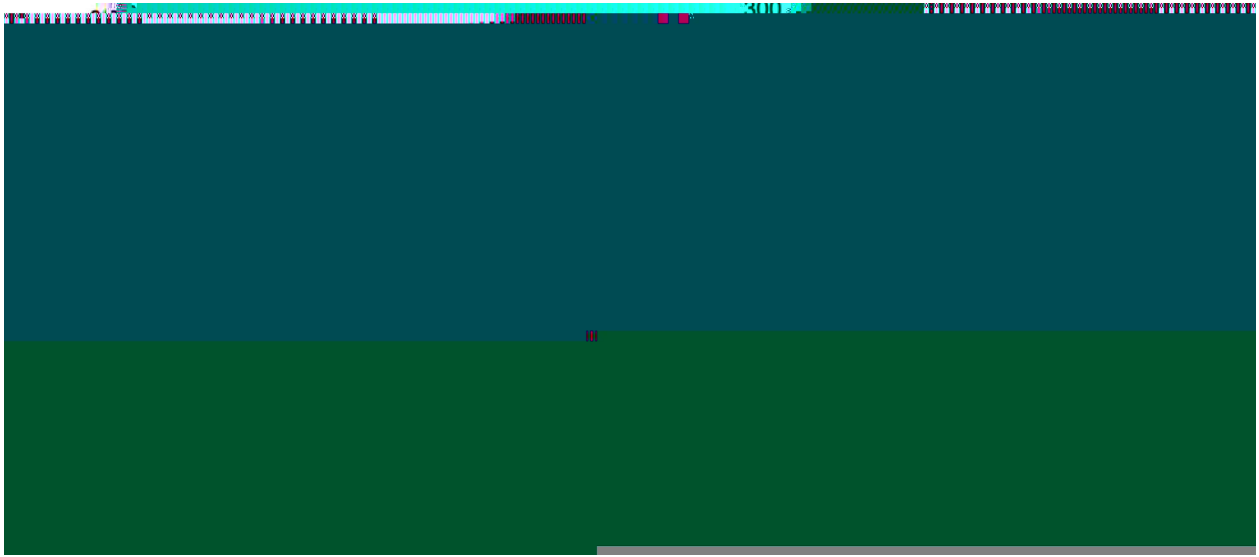


BR

TIP32

\*\*\*\*

( ) / Temperature Profile for Dip Soldering(Pb-Free)



± ± ± ±

/ Resistance to Soldering Heat Test Conditions

± ± °C

/ Packaging SPEC.

封装形式	包装数量					包装尺寸 :		
	Units/Bag 只/袋	Bags/Inner Box 袋/盒	Units/Inner Box 只/盒	Inner Boxes/Outer Box 盒/箱	Units/Outer Box 只/箱	Bag 袋	Inner Box 盒	Outer Box 箱
TO-220/F	200	10	2,000	5	10,000	135×190	237×172×102	560×245×195

封装形式	包装数量					包装尺寸 :		
	Units/Tube 只/套管	Tubes/Inner Box 套管/盒	Units/Inner Box 只/盒	Inner Boxes/Outer Box 盒/箱	Units/Outer Box 只/箱	Tube 套管	Inner Box 盒	Outer Box 箱
TO-220/F	50	20	1,000	5	5,000	532×31.4×5.5	555×164×50	575×290×180

/ Notices